

New calving evaluations

How a more detailed model is beneficial to everyone



#ISGC20

Background to Current Calving Evaluation

- **Predicted Transmitting Ability (PTA):** measure of genetic merit
PTA range: 1 - 30%
- **Reliability:** measure of confidence surrounding PTA
- Reliability: 0 - 99%

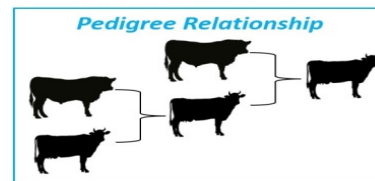


~20 million records on 40 breeds

- No assistance
- Some assistance
- Vet assistance
- Considerable assistance



Heritability
9%



#ISGC20

Strengths

- One published trait and reliability for all cow types
- Comparable across breeds

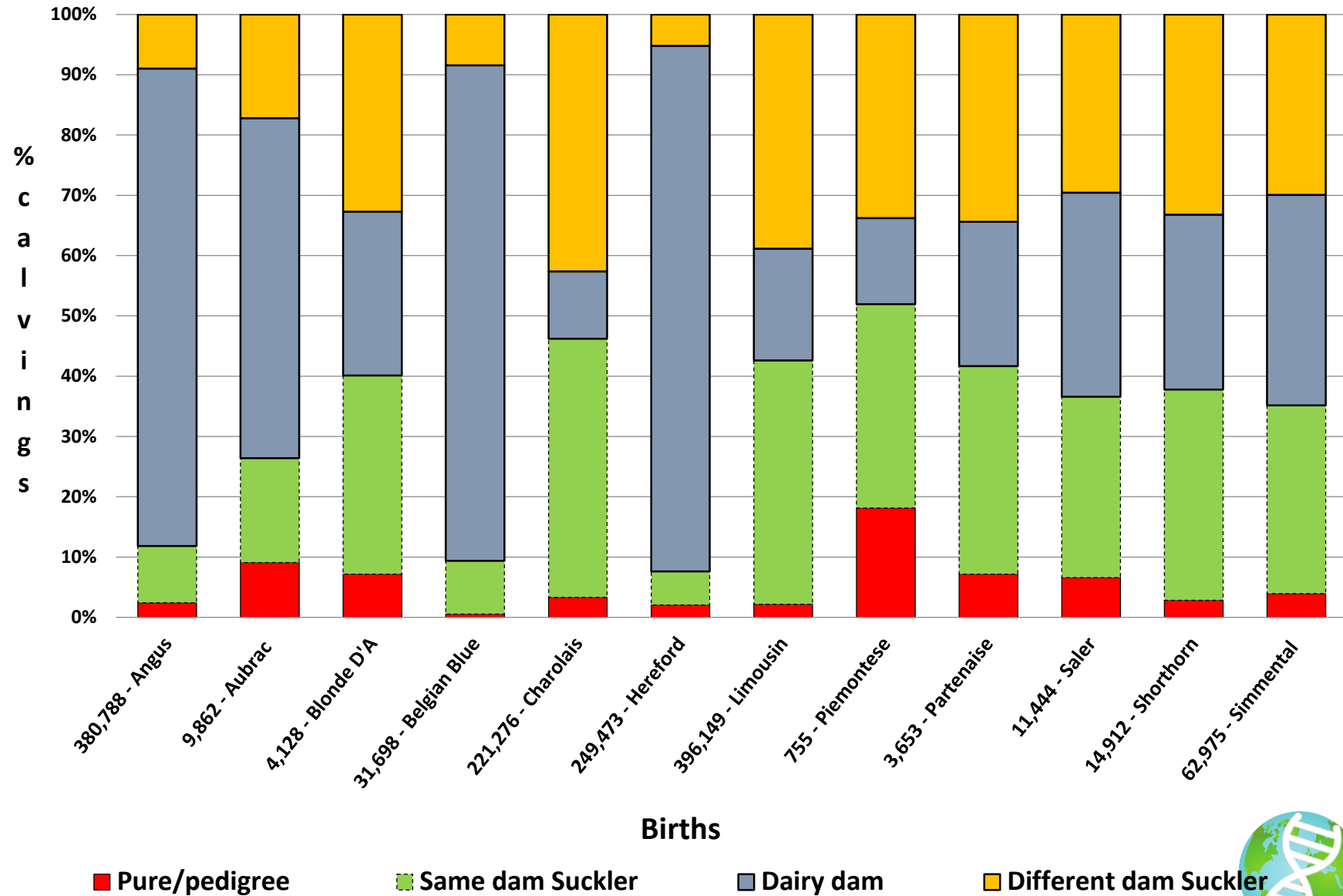


Weaknesses

- No visibility of contribution of heifer v cow records
- No visibility of contribution of beef v dairy records
- High reliability bulls may NOT be proven on the type of cow you have
 - i.e. first crop progeny normally proven on mature cows
- Assumed that the genetic component is the same across all cow types
- Genomics not tailored to specific regions that may differ across cow types

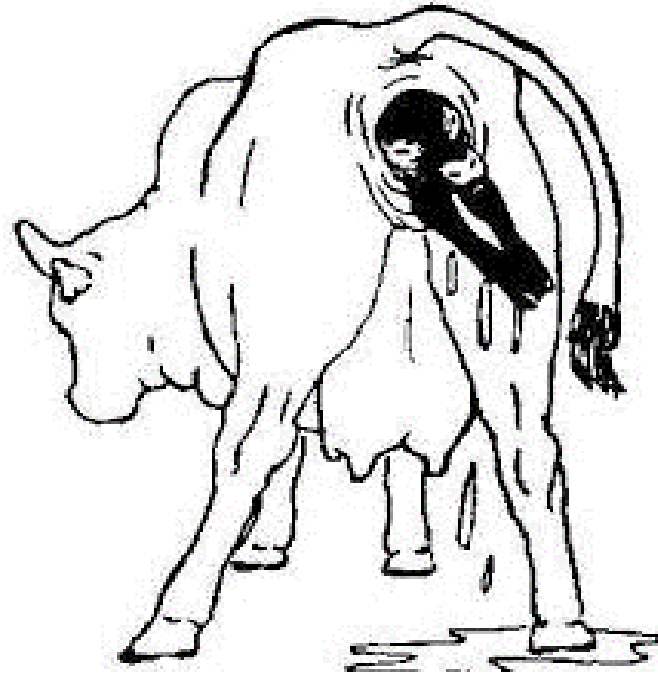


Breed Profile: Calves born 2018



New Calving Evaluation

Dairy Herd



Suckler Herd



Dairy Heifer



Dairy Cow



Beef Heifer



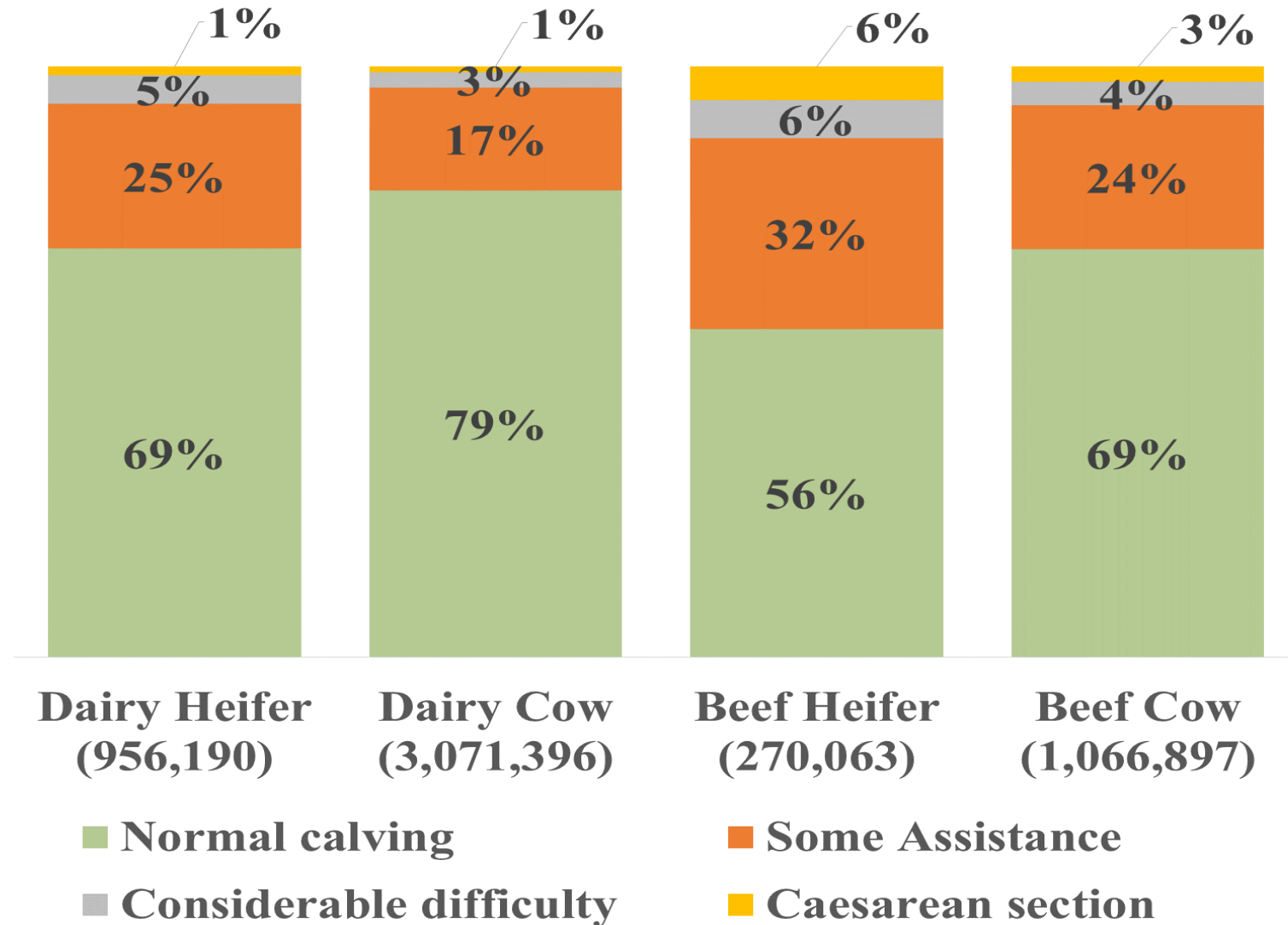
Beef Cow

Now treating as 4 different traits



#ISGC20

Distribution of Calving Difficulty Scores



- Heifers have a higher incidence than cows
- Beef animals have a higher incidence than dairy animals

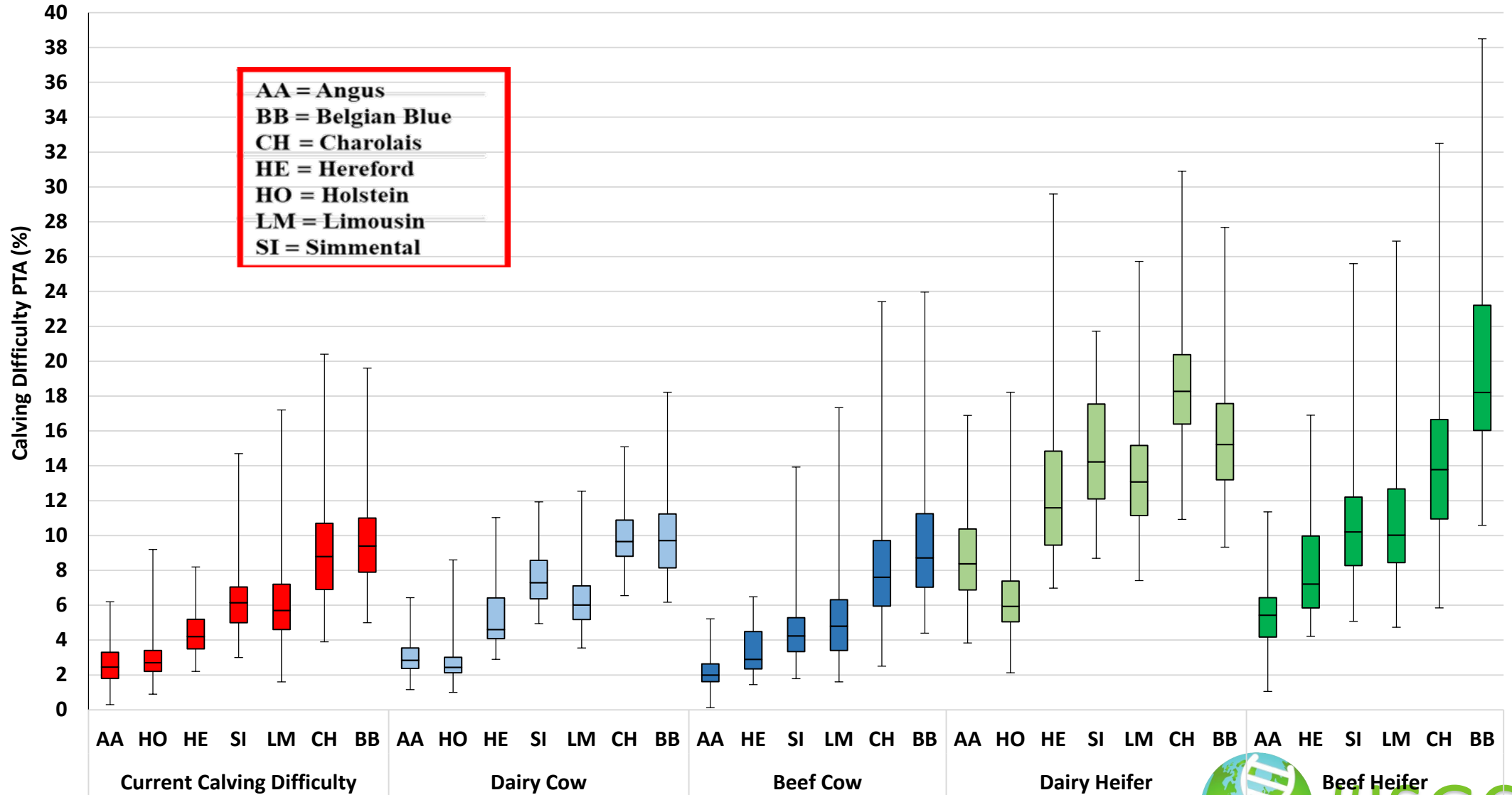


Heritability and Genetic correlations

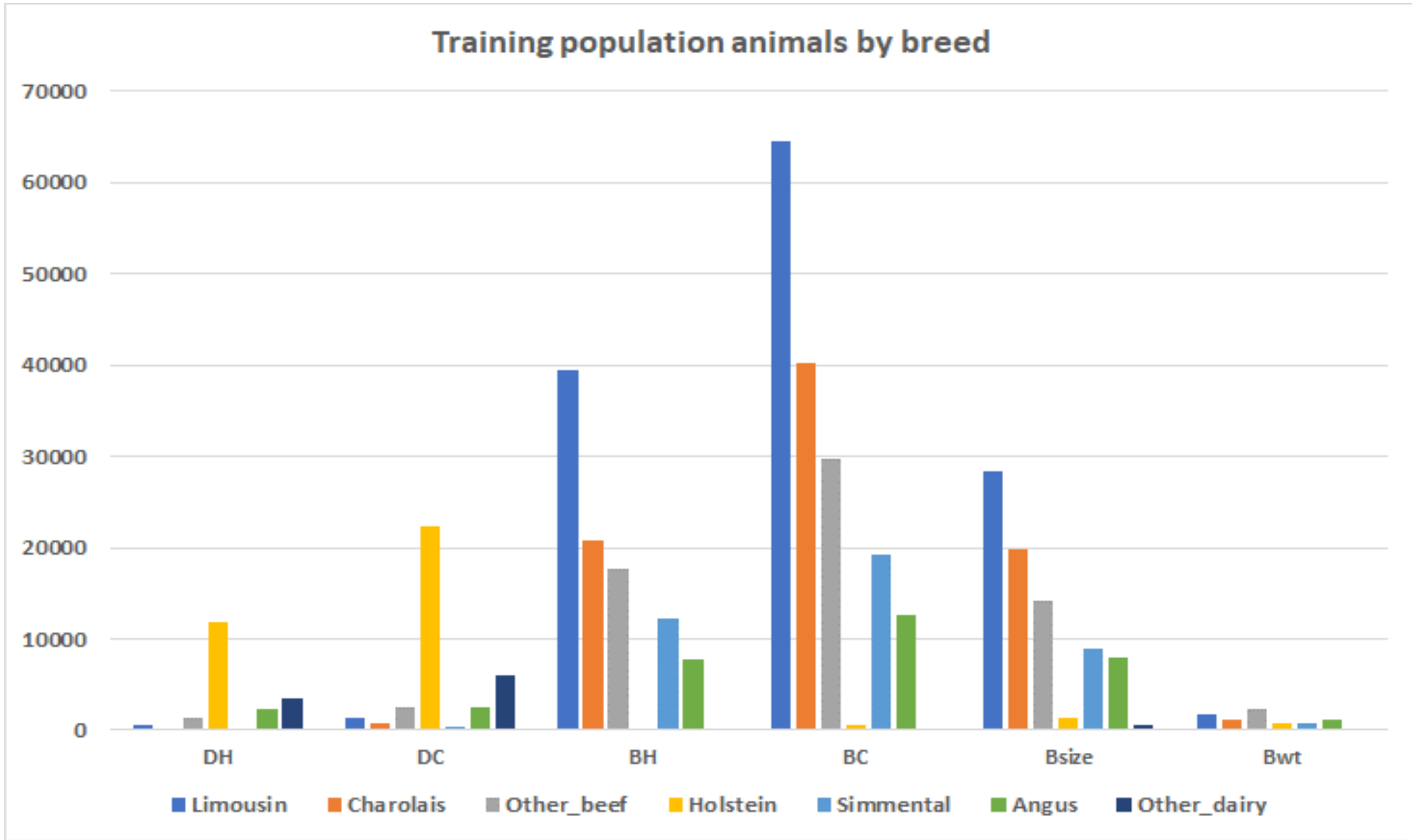
Trait	<i>heritability</i>	Dairy Heifer	Dairy Cow	Beef Heifer	Beef cow	Birth size
Dairy Heifer	16%					
Dairy Cow	8%	0.91				
Beef Heifer	17%	0.8	0.78			
Beef cow	15%	0.62	0.59	0.94		
Birth size	24%	0.82	0.74	0.88	0.85	
Birth weight	41%	0.63	0.64	0.64	0.62	0.52



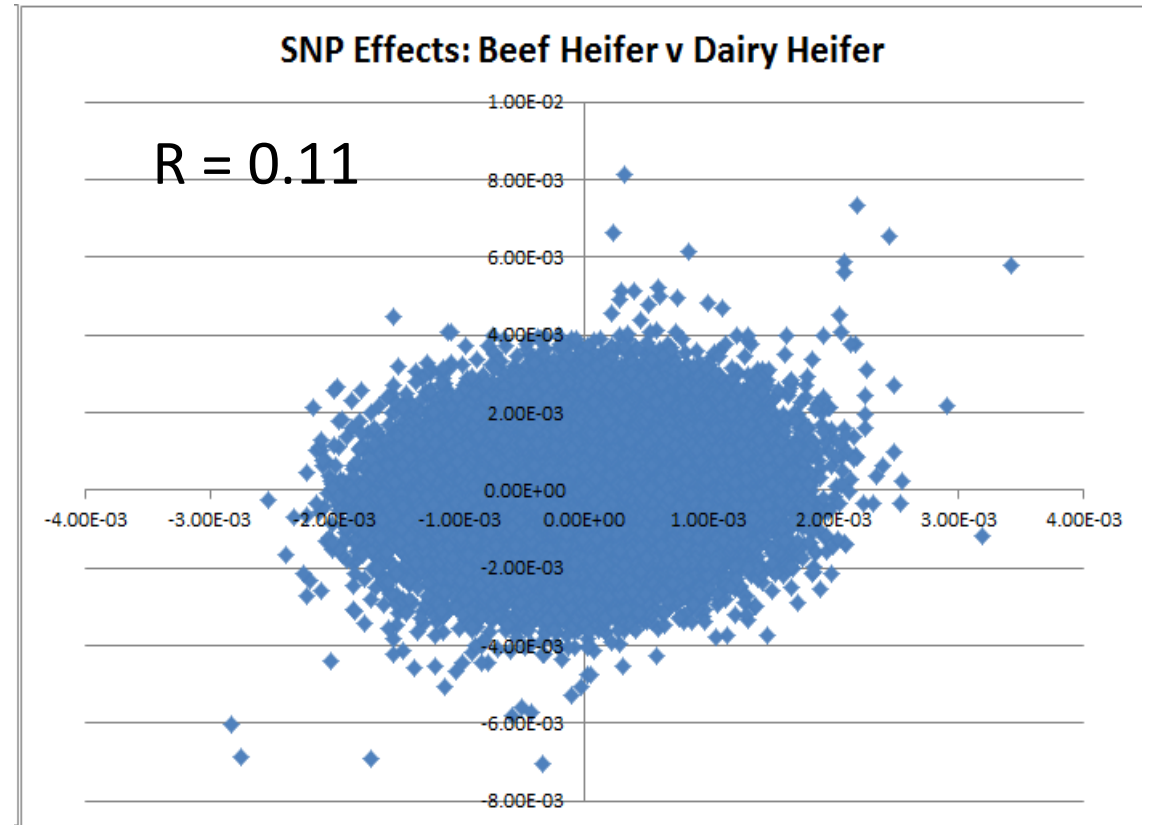
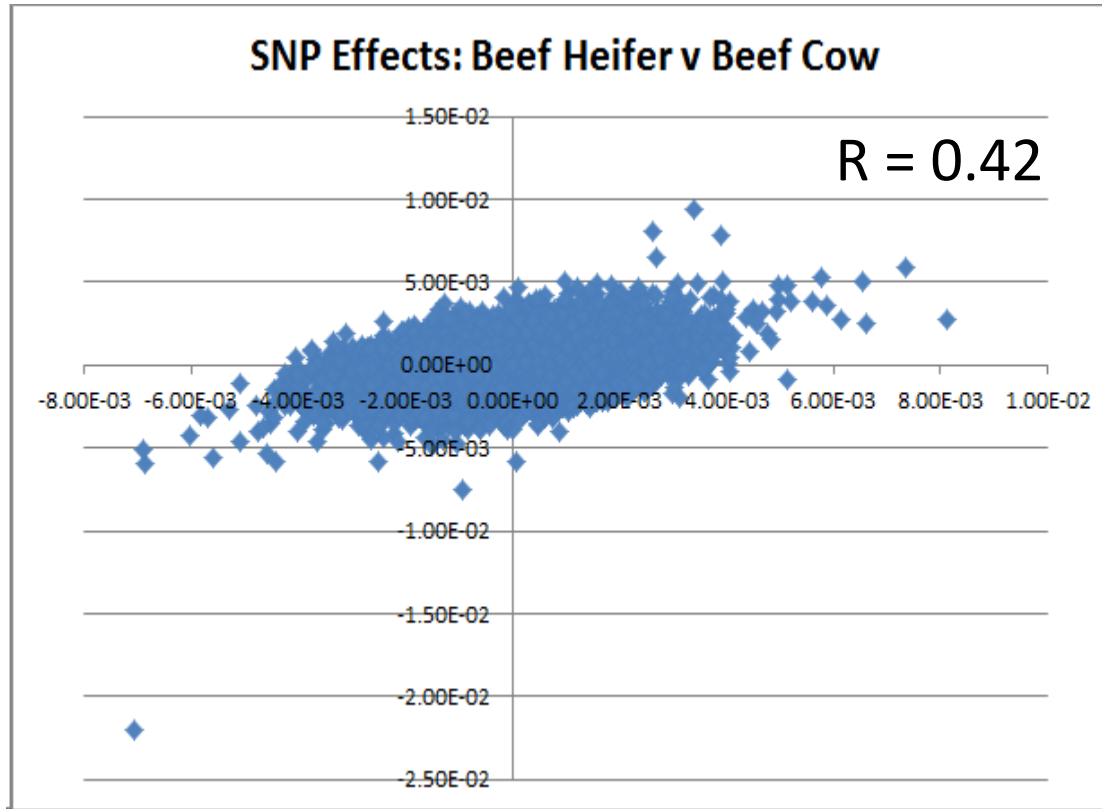
Breed profiles new v old



Genomics: Breed influence by trait



SNP effect differences by trait

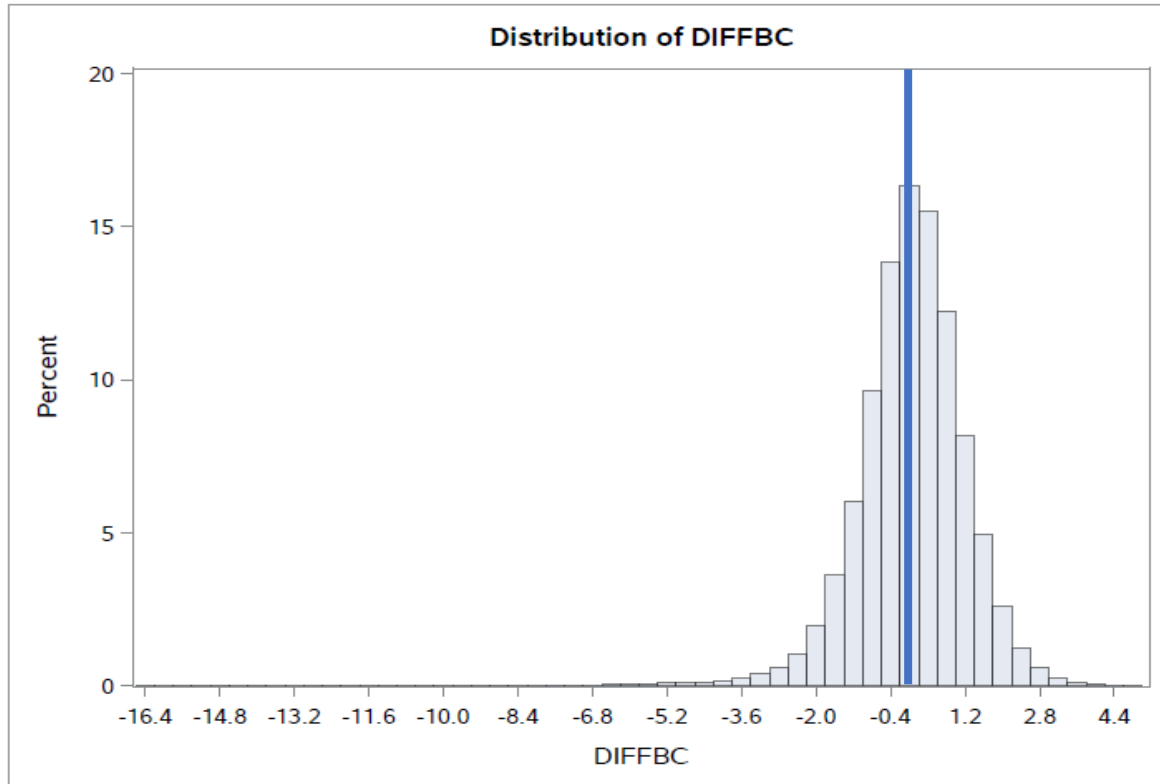


SNP effects influenced by representative breeds

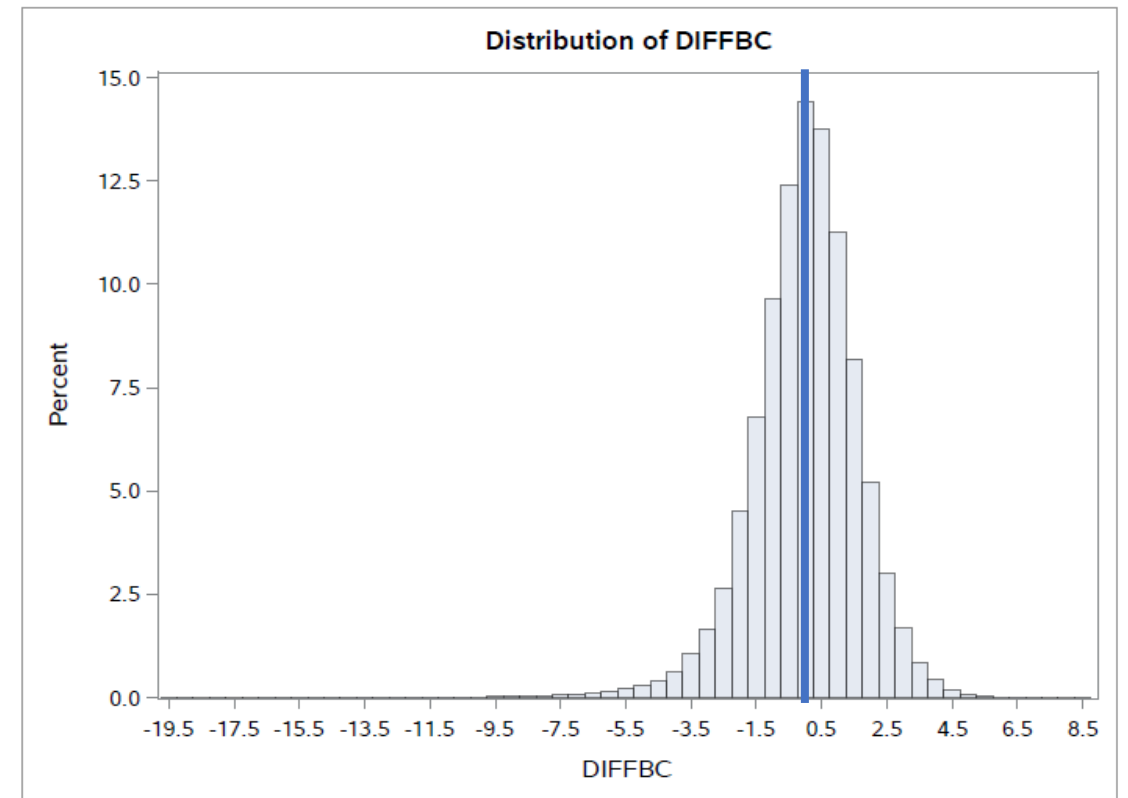


#ISGC20

Limousin



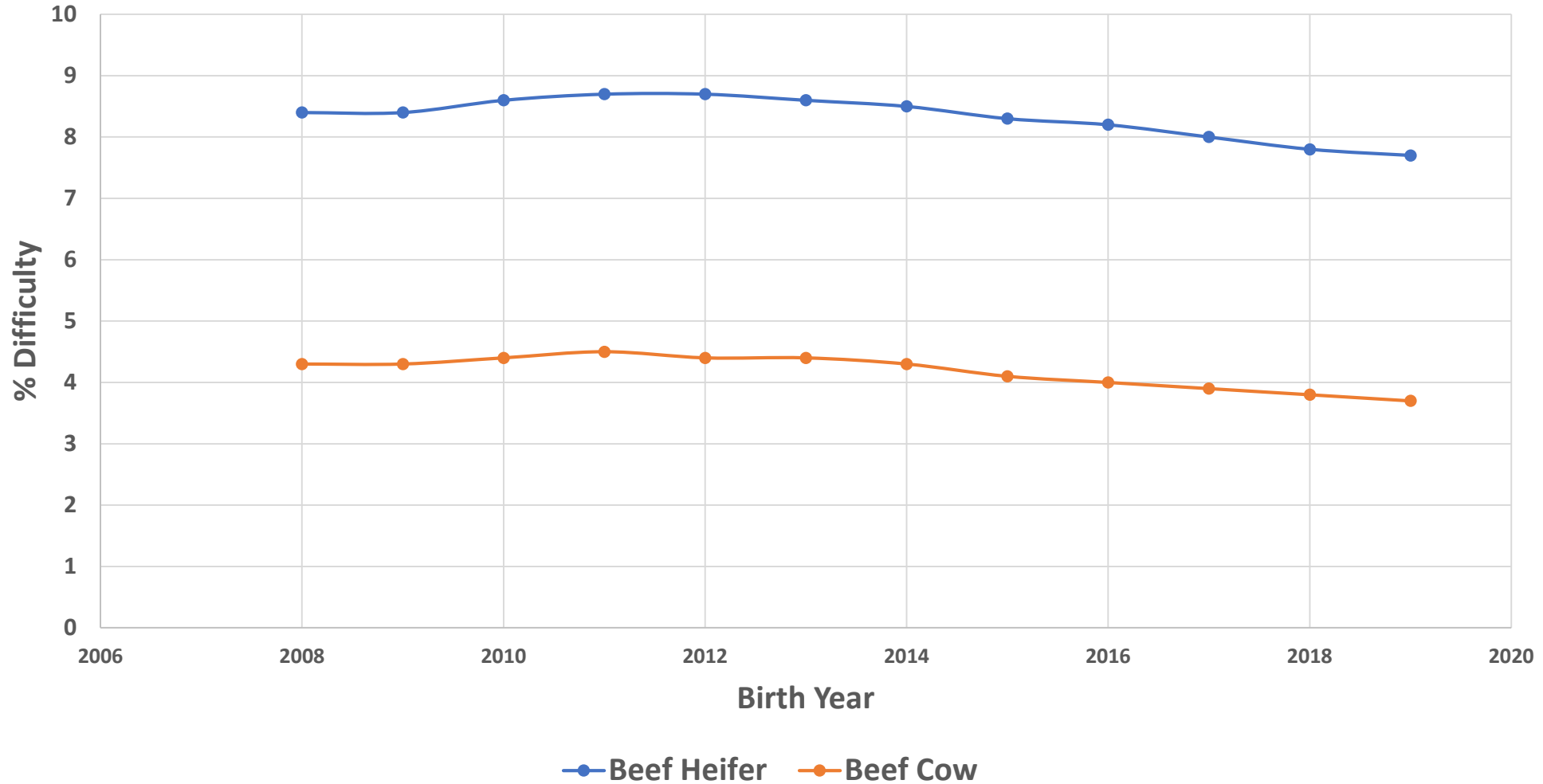
Charolais



- 99% of LM animals move by -3.2% to 2.6% on Beef Cow calving difficulty
- 99% of CH animals move by -4.9% to 3.6% on Beef Cow calving difficulty
- Average reliability increase for LM = 34% and CH = 33%



Genetic Trends for pedigree animals: Suckler traits



Changes to bull search

Beef Farmer



Dairy Farmer

Farmer initial preference remembered

Genotype included in evaluation

Replacement/Terminal Dairy Beef

Euro-star Index | Replacement Graphics | Terminal Graphics | Linear Type | TB And Liver Fluke | Pedigree | Evaluation History | Index Comparison

Star Rating (within Limousin breed)	Economic Indexes	Purpose	€uro value	Index reliability	Star Rating (across all beef breeds)
★★★★★	Replacement (per daughter lactation)	To breed future cows for the suckler herd	€131	95% (V High)	★★★★★
★★★☆☆	Terminal	To breed beef animals from the suckler herd that are destined for slaughter	€121	97% (V High)	★★★★☆

Calving Difficulty (Births requiring considerable assistance)

When Mated With:	Value	Reliability
Beef Heifers Breed avg: 4.69%, All breeds avg: 4.49%	8.36%	99% ()
Beef Cows Breed avg: 4.69%, All breeds avg: 4.49%	3.36%	99% ()

Star Rating (within Limousin breed)	Key profit traits	Index value	Trait reliability	Star Rating (across all beef breeds)
Expected progeny performance				
★★★★☆	Docility (1-5 scale) Breed avg: -0.06, All breeds avg: 0.01	-0.03 scale	99% (V High)	★★★☆☆
★★★☆☆	Carcass weight (kg) Breed avg: 23.68kg, All breeds avg: 16.19kg	19.5kg	99% (V High)	★★★★☆
★★★★☆	Carcass conformation (1-15 scale) Breed avg: 2.14, All breeds avg: 1.35	2.18 scale	99% (V High)	★★★★★
Expected daughter breeding performance				
★★★★☆	Daughter calving difficulty (% 3 & 4) Breed avg: 5.95%, All breeds avg: 5.79%	12.14%	94% (V High)	★★★☆☆
★★★☆☆	Daughter milk (kg) Breed avg: -0.72kg, All breeds avg: 2.24kg	-3.00kg	96% (V High)	★★★☆☆
★★★★★	Daughter calving interval (days) Breed avg: 1.21 days, All breeds avg: -0.78 days	-5.93days	84% (V High)	★★★★★

Genotype included in evaluation

Replacement/Terminal Dairy Beef

Dairy Beef Index | Euro-star Index | Replacement Graphics | Terminal Graphics | Linear Type | TB And Liver Fluke | Pedigree | Evaluation History | Index Comparison

Dairy Beef Index
Use the Dairy Beef Index to breed beef animals from the dairy herd that are destined for slaughter

Use the Dairy Beef Index to breed beef animals from the dairy herd that are destined for slaughter

Index	Euro	Rel	Percentile Rank
Dairy Beef Index	90	97%	~85%
Value of Calving Sub-Index	-34	98%	~5%
Value of Beef Sub-Index	124	96%	~50%

Value of Calving Sub-Index	PTA	Rel	Percentile Rank
Risk of Calving Difficulty on Dairy Heifers: Low	12.41	85%	~50%
Dairy Heifer Calving Difficulty (%)	5.19	98%	~10%
Gestation Length (days)	3.9	99%	~45%
Calf Mortality (%)	-0.17	95%	~45%

Value of Beef Sub-Index	PTA	Rel	Percentile Rank
Feed Intake (kg)	-0.74	84%	~95%
Docility (scale)	-0.03	99%	~35%
Carcass Weight (kg)	19.50	99%	~65%
Carcass Fat (scale)	0.08	99%	~30%
Carcass Conformation (scale)	2.18	99%	~95%
Out of Spec: Weight (%)	2.18	99%	~95%
Out of Spec: Conformation (%)	2.18	99%	~95%
Polledness	1	1	~50%



Star Rating (Within Hereford breed)		Economic Indexes		€uro value per progeny	Index Reliability	Star rating (across all beef breeds)
★	Replacement	€28	40% (Average)	★		
★★★★	Terminal	€48	44% (Average)	★		

Calving Difficulty (Births requiring considerable assistance)			
When Mated With:	Value	Reliability	
Beef cows Breed avg: 2.9%, All breeds avg: 4.0%	2.1%	70% (High)	
Beef heifers Breed avg: 6.8%, All breeds avg: 8.4%	4.1%	64% (High)	

Star Rating (within Hereford breed)	Key Replacement Profit Traits	Value	Reliability	Star Rating (across all beef breeds)
★★	Docility (1-5 scale) Breed avg: 0.1, All breeds avg: 0.01	0.07	38% (Low)	★★★★★
★★★★	Carcass weight (kg) Breed avg: 4.43kg, All breeds avg: 16.19kg	+4.7kg	46% (Average)	★
★★★★★	Carcass conformation (1-15 scale) Breed avg: 0.49, All breeds avg: 1.38	+0.77 scale	45% (Average)	★

Expected Daughter Breeding Performance			
		Value	Reliability
★★	Daughter calving diff (% 3 & 4) Breed avg: 5.96%, All breeds avg: 5.79%	+6.01%	39% (Low)
★★	Daughter milk (kg) Breed avg: 3.28kg, All breeds avg: 2.24kg	+2.2 kg	37% (Low)
★	Daughter calving interval (days) Breed avg: -3.27days, All breeds avg: -0.77days	-0.76 days	37% (Low)

Additional Information: Myostatin: F94L Non Carrier; NT821 Non Carrier		Linear composites	Value	Reliability
		Muscle		
		Skeletal		
		Function		
		Herd data quality index		
		NIA		

[New page not previously available](#)

Dairy-Beef Index and Key Profit Traits

Evaluation Date: Sep 2019; Next Evaluation Date: 21 Nov 2019

	Dairy Beef Index	Calving Value SI	Beef Value SI	Gestation	Dairy Heifer CDiff	Dairy Cow CDiff	Carcass Weight	Carcass Conf
All Breed Average	-€3.35	-€12.13	€6.78	+1.5 days	12.0%	4.7%	4.4 kg	+0.49
HE Breed Average	-€14.52	-€74.96	€60.44	+2.7 days	12.7%	5.8%	16.2 kg	+1.38
LM Breed Average	-€14.52	-€74.96	€60.44	+2.7 days	12.7%	5.8%	16.2 kg	+1.38
SI Breed Average	-€14.52	-€74.96	€60.44	+2.7 days	12.7%	5.8%	16.2 kg	+1.38

LOT 1 RYLE GLEN EDWARD

Breed: Hereford
Birthdate: 11-Nov-2017

GENOTYPED

Dairy Beef Index	Dairy Beef Index	Calving Value SI	Beef Value SI		
€48 (Rel:40%)		-€29 (Rel:23%)	€35 (Rel:43%)		
Calving Traits	Gestation	Dairy Cow CDiff	Risk of Dairy Heifer CDiff	Dairy Heifer CDiff	
	-2.4 days (Rel:38%)	2.5% (Rel:34%)	High Risk	12.1% (Rel:53%)	
Beef Traits	Carcass Weight	Carcass Conformation			
	4.7 kg (Rel:46%)	(Rel:45%)			

Additional Information Myostatin: F94L Non Carrier; NT821 Non Carrier

LOT 2 CILL CORMAIC QUARTZ

Breed: Limousin
Birthdate: 27-Oct-2017

GENOTYPED

Dairy Beef Index	Dairy Beef Index	Calving Value SI	Beef Value SI		
€31 (Rel:44%)		-€17 (Rel:33%)	€11 (Rel:44%)		
Calving Traits	Gestation	Dairy Cow CDiff	Risk of Dairy Heifer CDiff	Dairy Heifer CDiff	
	+0.9 days (Rel:59%)	3.3% (Rel:71%)	Medium Risk	8.6% (Rel:67%)	
Beef Traits	Carcass Weight	Carcass Conformation			
	0.8 kg (Rel:46%)	0.49 (Rel:46%)			

Additional Information

LOT 3 GURTERAGH DICTATOR 757 ET

Breed: Simmental
Birthdate: 21-Nov-2017

GENOTYPED

Dairy Beef Index	Dairy Beef Index	Calving Value SI	Beef Value SI		
	Dairy Beef Index not available as animal is not genotyped				
Calving Traits	Gestation	Dairy Cow CDiff	Risk of Dairy Heifer CDiff	Dairy Heifer CDiff	
	+2.2 days (Rel:39%)	5.1% (Rel:66%)	High Risk	11.4% (Rel:61%)	
Beef Traits	Carcass Weight	Carcass Conformation			
	5.3 kg (Rel:46%)	0.67 (Rel:45%)			

Additional Information


Colour just to help user to identify Dairy-Beef page

#ISGC20

Impact on on-line services


133 ICBF online pages where calving difficulty PTA is shown!

All need to be changed

Animal Search

SEARCH NOW



Active Bull Lists

VIEW NOW

Profile Screen
Basic Herd Profile
Beef Eurostar
Breeding Chart Profile
C.O.W (Cow's Own Worth)
Dairy Ebi Profile
Dairy Genomic Evaluation Profile
Expected Calving (Beef)
Expected Calving (Dairy)

Reports

- BEEF CALVING REPORT
- BEEF OUTPUT REPORT
- DAIRY CALVING REPORT
- DRY STOCK REPORT
- EBI REPORT
- BDGP EURO-STAR REPORT
- BEEF EUROSTAR REPORT
- EXPECTED CALVING LIST
- END OF SEASON FERTILITY REPORT
- WEEKLY FERTILITY REPORT
- GROW REPORT
- SLAUGHTER REPORT
- SUCKLER COW REPORT
- WEIGHT RECORDING REPORT
- WEANING PERFORMANCE REPORT
- DAIRY COW REPORT
- HERDPLUS NOTEBOOK

Change Is **Good**



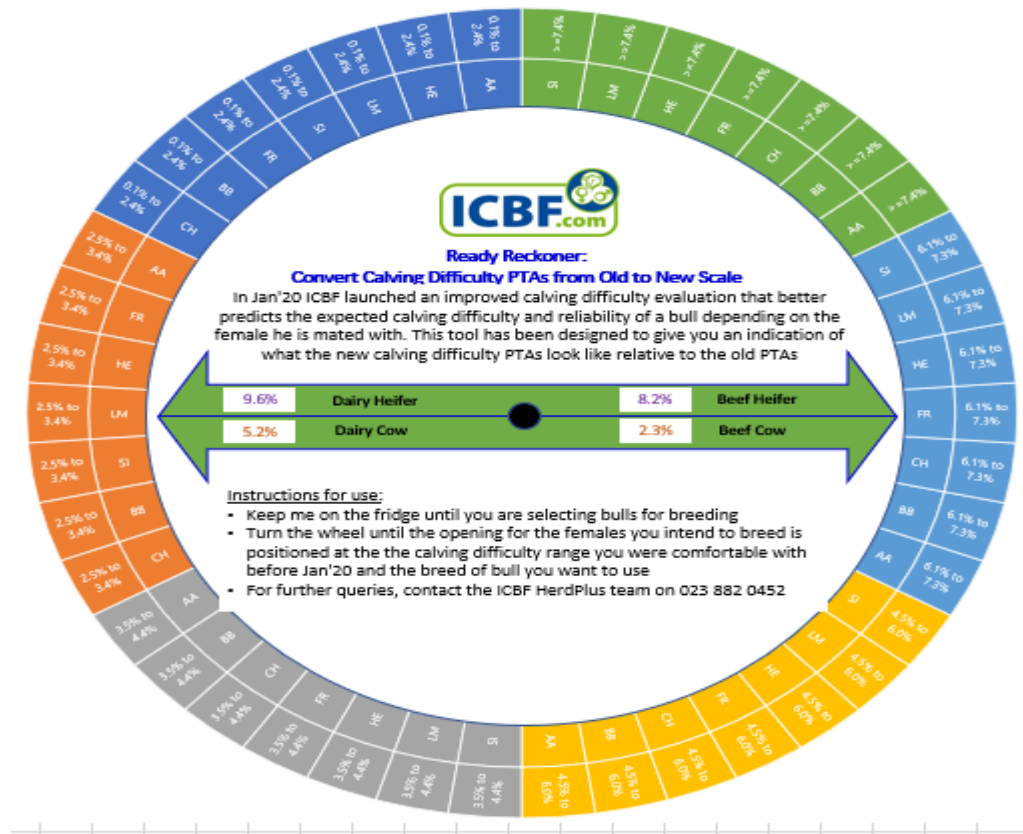
But It's Never **Easy**. 😊



#ISGC20

Ready Reckoner

Old	Dairy Heifer	Dairy Cow	Beef Heifer	Beef Cow
0.1% to 2.4%	6.7	2.7	5	2
2.5% to 3.4%	8	3.5	6.4	2.6
3.5% to 4.4%	10.1	4.7	7.7	3.2
4.5% to 6.0%	13.2	6.7	9.5	4.2
6.1% to 7.3%	15.9	8.5	11.3	5.5
>=7.4%	18.1	9.8	14.6	7.9



#ISGC20

Conclusions

- Evaluation of calving difficulty has changed
 - Same data..... Treated differently!
- Benefits of new system
 - Allows more targeted breeding decisions (heifers v cows)
 - Specific trait reliabilities indicate where a sire has most data
- Genetic trends are positive for Suckler Heifer and Cow traits
- New evaluations will roll-out next week with next proof run



#ISGC20



Our Farmer & Government Representation



Our AI & Milk Recording Organisations



Our Herdbooks



THE ABERDEEN-ANGUS CATTLE SOCIETY



Irish Charolais Cattle Society



MRI Cattle Society of Ireland
Meuse Rhine Issele -- Milk & Muscle!

Norwegian Red Cattle Society



Acknowledging Our Members