



IRISH CATTLE BREEDING FEDERATION

GENE IRELAND Progeny Testing; A farmers experience.

John Kingston
Ballygarvan, Co. Cork



Herd Background

1960	Father Started Herd	
1968	H/B Milking Parlour	
1983	Quota - 240 Cows	
1970's	Stock bulls for Production & Type	
1979	Graded Up to Pedigree Used More A.I.	
1980's	High Protein % bulls	

Herd Background

1989	New Zealand - 6 Months
1990	Farming Full Time Imported 10 Dutch Cows
1990's	Sheik & Bet Families
Late 90's	Discussion Groups - High Infertility Rate- Herd Needed Change
1998	NZ Semen
2000 -07	EBI in 2002 Selected Bulls for Milk Solids & Fertility within Index

Sires Used

- **GOOD BULLS**

- LYE, UYC, MAU, CWJ, CBH, PUM, SPW, SBB, BGZ

-

- **POOR BULLS**

- DXD, ESZ, AHD, BWZ, JOS, DBS, OYE, SWB



Herd Data 2007

Fertility Analysis 2007

	%	EBI	Milk Sub Index	Fert Sub Index	Lact No	Calving Date	Last service Date	Calving to last Serve Days
Empty	14	62	32	34	4	13-Mar	20-Jul	129
One Serve	45	74	34	39	2.8	01-Mar	19-May	79
Two Serves	28	65	32	35	3.5	08-Mar	06-Jun	90
Three Serves	7	63	33	31	3.4	26 - Feb	15-Jul	138
Four + Serves	6	64	34	321	2.6	15-Mar	15-Jul	145
Herd Average		68	33	36				

Bulls Used 2007

Code	EBI	MILK	FERTILITY
KNW	142	65	87
WLI	110	55	55
RMW	96	53	45
NUG	78	47	9
AAP	83	45	33
LOO	93	76	10
MUV	86	56	40
HFL	132	47	51
HZN	121	39	76
AVERAGE	105	54	45

Bull Mothers at Killingley

- FB 348 (Sijke Hugo)
- Dam of KSY, KTJ & 51992.
- EBI = €104
- UYC * CAU
- DOB = 9/3/02
- 4th Lact = 9/2/07
 - 6101 l @ 4.46% BF & 3.60% Ptn
 - 492 kg MS
 - 262 days
- Lifetime performance
 - 502 kg MS & 361 CI Days



AI Bull's from Killingley

Bull Details			Sire Details		Dam Details			Owner Details	
Code	YOB	EBI	Code	EBI	Dam ID	EBI	MGS	Owner	GENRE
KXI	2002	€87	UYC	€110	0009D	€56	CAU	NCBC	
KTX	2003	€94	LYE	€96	90560	€106	MAU	NCBC	2005
KIJ	2003	€61	ESZ	€76	60789	€54	DSB	NCBC	2005
KSY	2004	€73	DCD	€37	41232	€104	UYC	NCBC	2005
KGI	2005	€79	HTP	€51	71235	€109	UYC	NCBC	
KTJ	2005	€97	KLA	€91	41232	€104	UYC	ABS-Genus	
SXL	2005	€107	BWZ	€117	51019	€97	LYE	ABS-Genus	2007
51992	2006	€89	NHS	€76	41232	€104	UYC	NCBC	2008?



The ones that got away!

No	EBI	SIRE	MGS
268	146	SPW	JOS
267	106	SPW	JOS
286	118	LYE	MAU
435	139	UYC	SPW

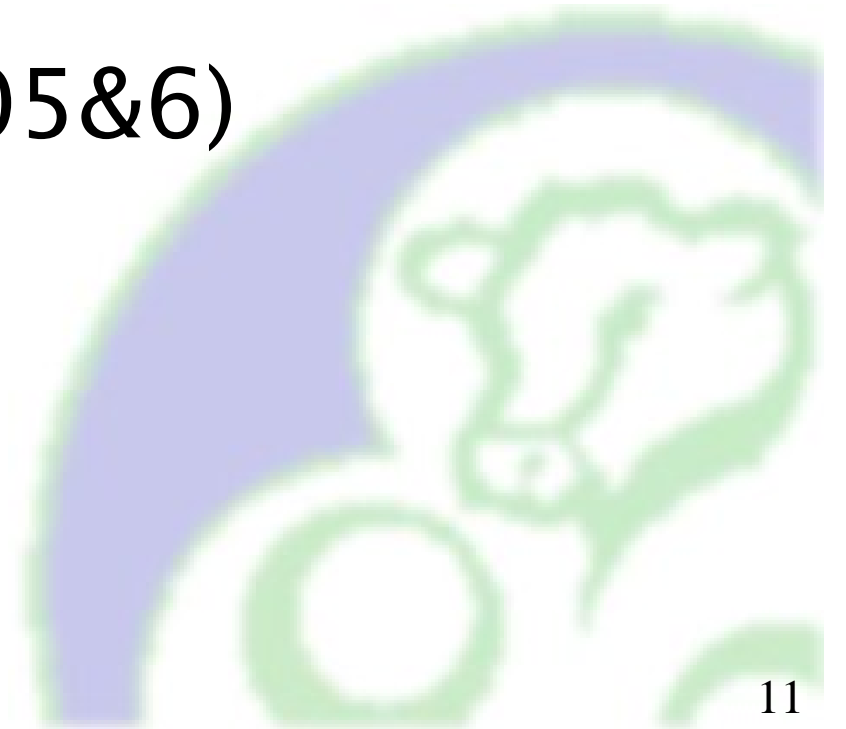
Why am I involved

- High EBI herd – good cow families
- Contributes to national herd development
- Interested in developing Economic Traits of herd - **Milk Solids & Fertility**
- **Monetary Rewards Attractive**



Experiences to-date?

- 6 Bulls to NCBC (2003-2006)
- 4 Bulls to ABS (2005&6)



Suggested improvements.

- Look for Cow Families in more herds –
Search the DATABASE
- Pedigree Status??
- LOOK for Fertility & Milk Solids