

AgNav: Putting Climate Action Planning in Farmers' Hands

Mike Lynch – ICBF

ICAR 23rd May 2024





A Sea of Numbers....

How do we plot a course ?

Multi-Level Targets



FROM NUMBERS TO ACTIONS...

WHAT ARE THE CURRENT GREENHOUSE GAS EMISSIONS ?

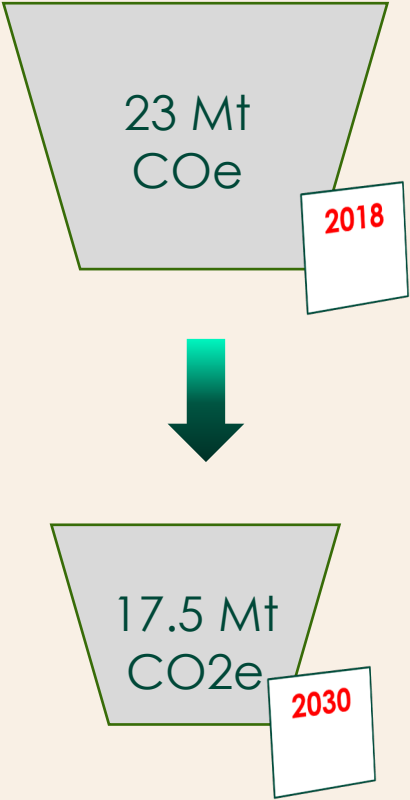
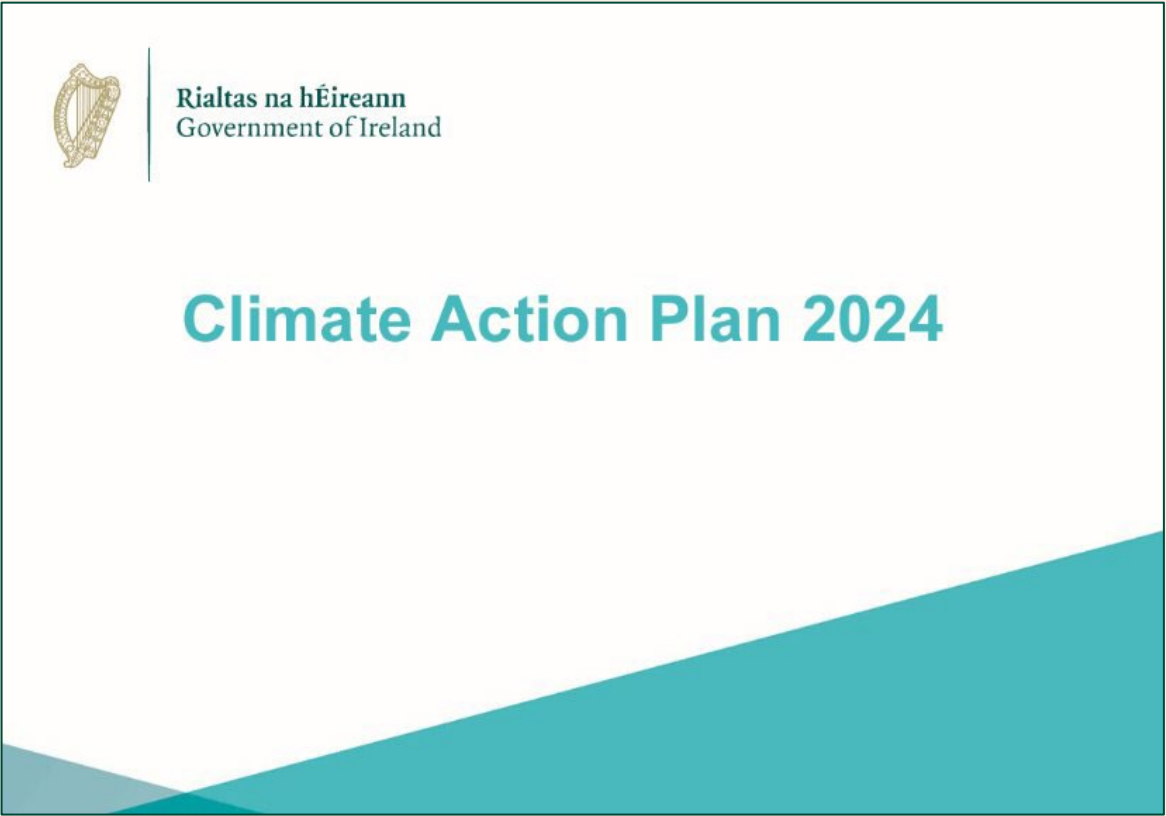
WHAT ARE THE SOURCES?

WHAT IS THE TARGET FOR OUR SECTOR?

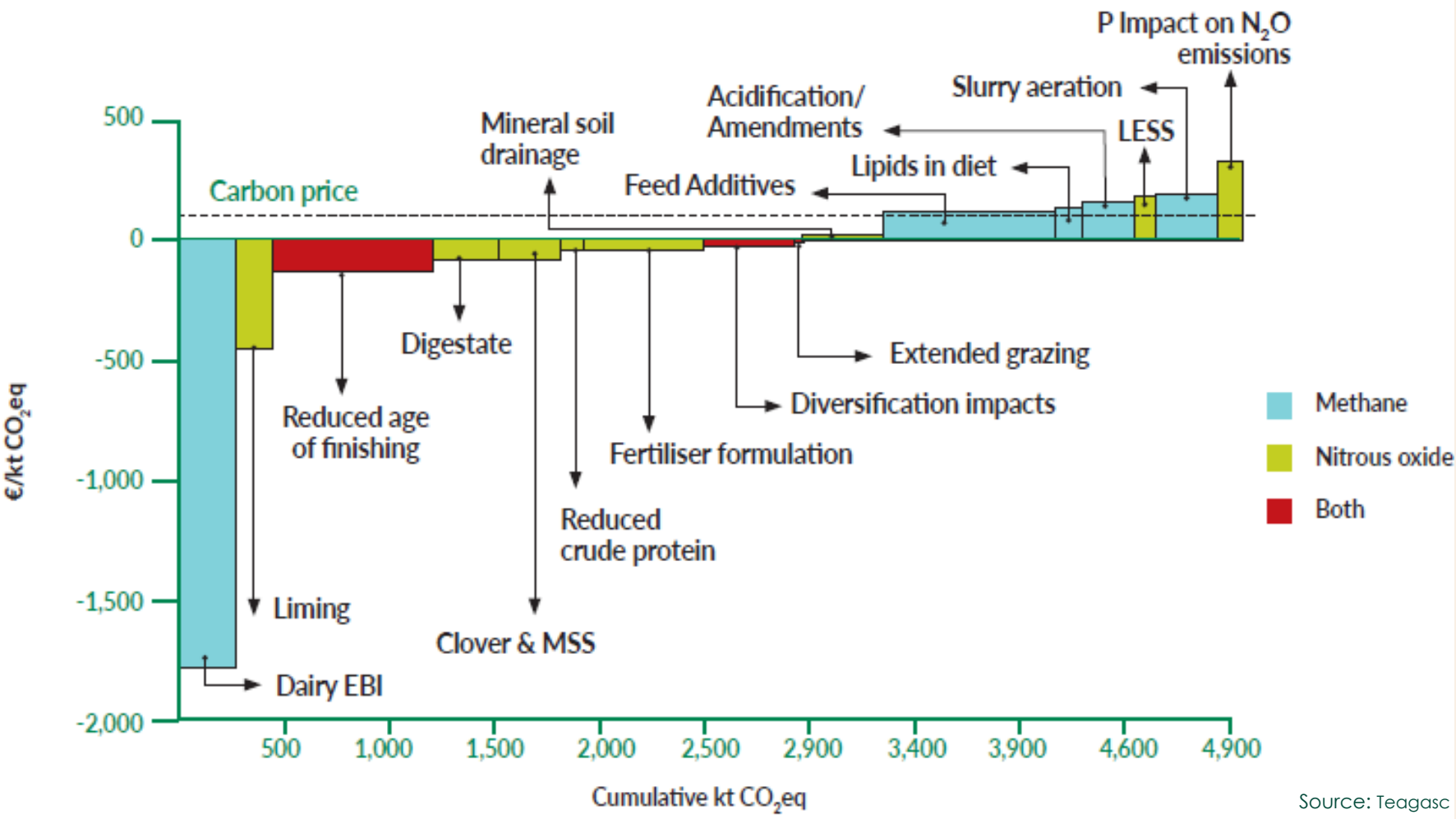
HOW DO WE GET TO THESE TARGETS ?

WHAT DOES IT MEAN FOR AN INDIVIDUAL FARMER ?

Emissions Targets for Agriculture

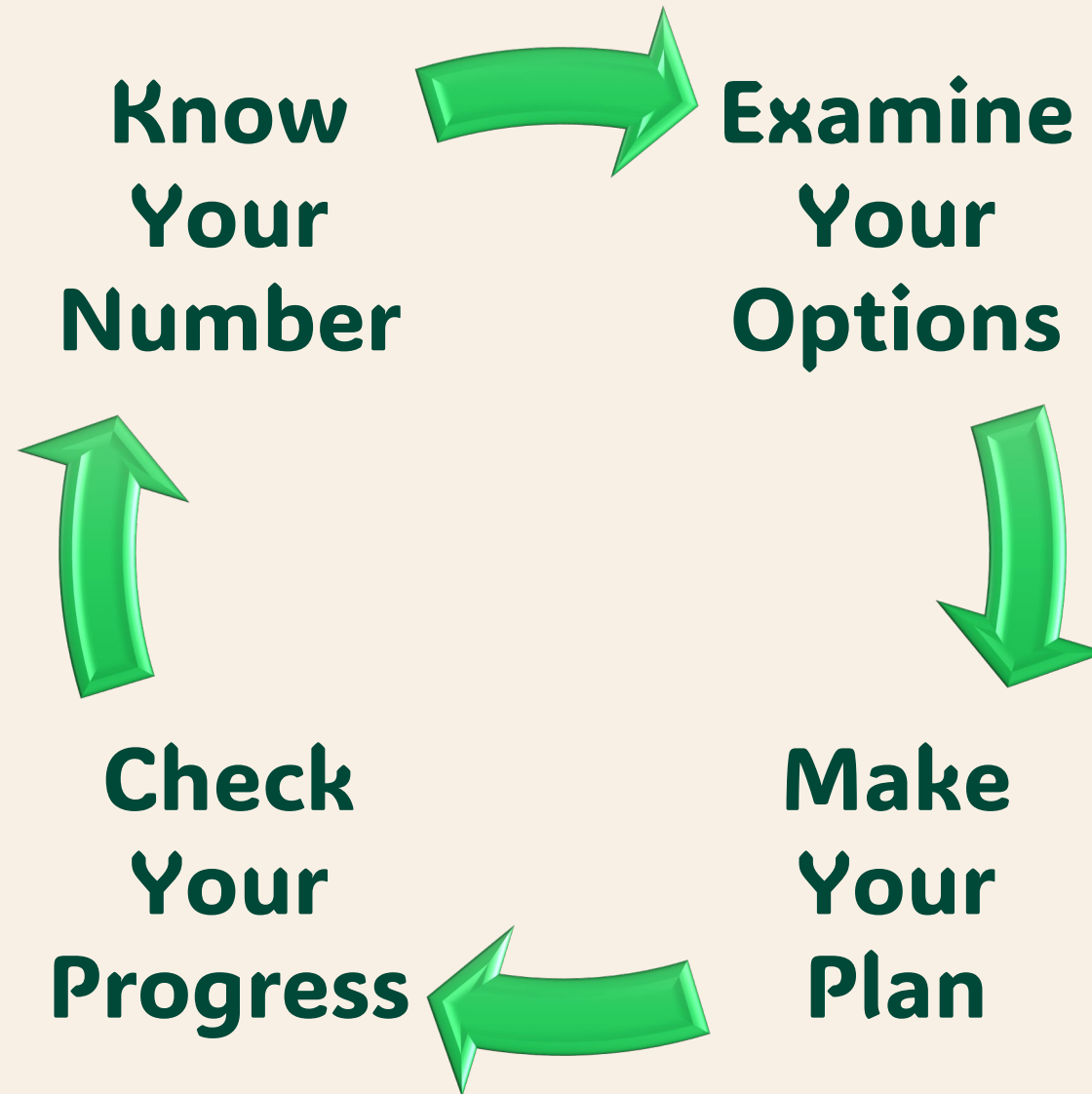


Marginal Abatement Cost Curve (MACC)



Virtuous Cycle

7



- Robust scientific models
 - Validated data sources
 - Ability to run models at large scale
 - Farm specific Action Plans
 - Advisory channels to assist farmers on this journey
-
- **Agnav** platform developed by Bord Bia, Teagasc and ICBF to support farmers to improve the sustainability of their farms



Organisational Roles

- Scientific Research
- Peer Reviewed Carbon Models
- Farm Advisory Programmes



- Scientific expertise & research outputs
- Carbon assessment models & tools
- Signpost Advisory Services & demo farms
- Relevant datasets



- Central Database
- IT Implementation of Models
- User Interfaces

- IT Infrastructure & resource
- Data processing & analysis
- AIM data
- Relevant datasets



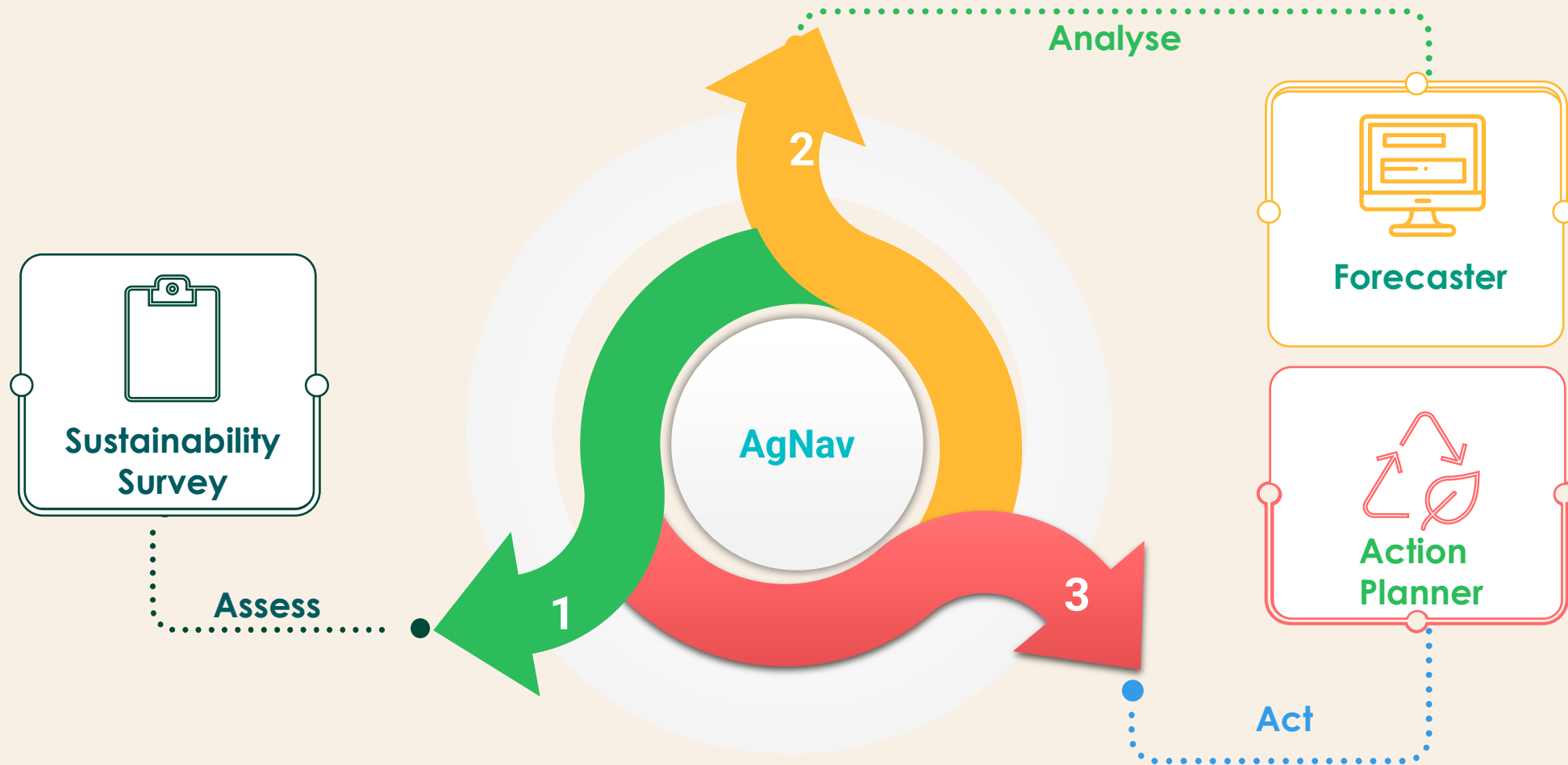
- Farm Level Quality Assurance
- Validated Datasets
- Farm Planning Tools

- QA scale and infrastructure
- Farm Sustainability Survey
- Carbon Footprints (Farmer Feedback Report)
- E-Learning
- Sustainability Planning Tools
- Relevant datasets



The pathway to Action..

10





Sign into your account

 Email / Herd Code

 Password

Login

[Forgot Password](#)



AGNAV

×

Michael Lynch
ADMIN

General

Homepage

Advisor Dashboard

Grant Access

Processor Admin

Terms & Conditions

Sign Out

Forecaster

Action Planner

Input Summary

...

Herd Code

Production Year
2022

Greenhouse Gases

Ammonia

Production

281460

Total Emissions
(kg CO2 equivalent)

Emissions Breakdown

6325

Emissions Per Hectare
(kg CO2 equivalent / hectare)

10.55

Footprint (Beef)
(kg CO2 equivalent / kg
LW Gain)

Calculate

Save Modifications

Reset

Nitrogen Fertiliser

Slurry Spreading

Grazing Season

Finishing Age

Reduce Fertiliser Use

AGNAV

×

Michael Lynch
ADMIN

General

Homepage

Advisor Dashboard

Grant Access

Processor Admin

Terms & Conditions

Sign Out

Forecaster

Herd Code

Production Year
2022

Ammonia

Production

281460

Total Emissions
(kg CO2 equivalent)

Emissions Breakdown

6325

Emissions Per Hectare
(kg CO2 equivalent / hectare)

10.55

Footprint (Beef)
(kg CO2 equivalent / kg
LW Gain)

Calculate

Save Modifications

Reset

Nitrogen Fertiliser

Slurry Spreading

Grazing Season

Finishing Age

Reduce Fertiliser Use

Action Planner

Input Summary

...

Overview

Animal Inventory

Production

Fertilizer and Lime

Manure Management

Dairy Cows Concentrate Feeding

Indoor / Outdoor Feeding

Grazing and Housing

Finishing

Michael Lynch
ADMIN

Forecaster

Ammonia

Production

281460

Total Emissions
(kg CO2 equivalent)

Emissions Breakdown

6325

Emissions Per Hectare
(kg CO2 equivalent / hectare)

10.55

Footprint (Beef)
(kg CO2 equivalent / kg LW Gain)

Calculate

Save Modifications

Reset

Nitrogen Fertiliser

Slurry Spreading

Grazing Season

Finishing Age

Reduce Fertiliser Use

Action Planner

Input Summary

...

Overview

Animal Inventory

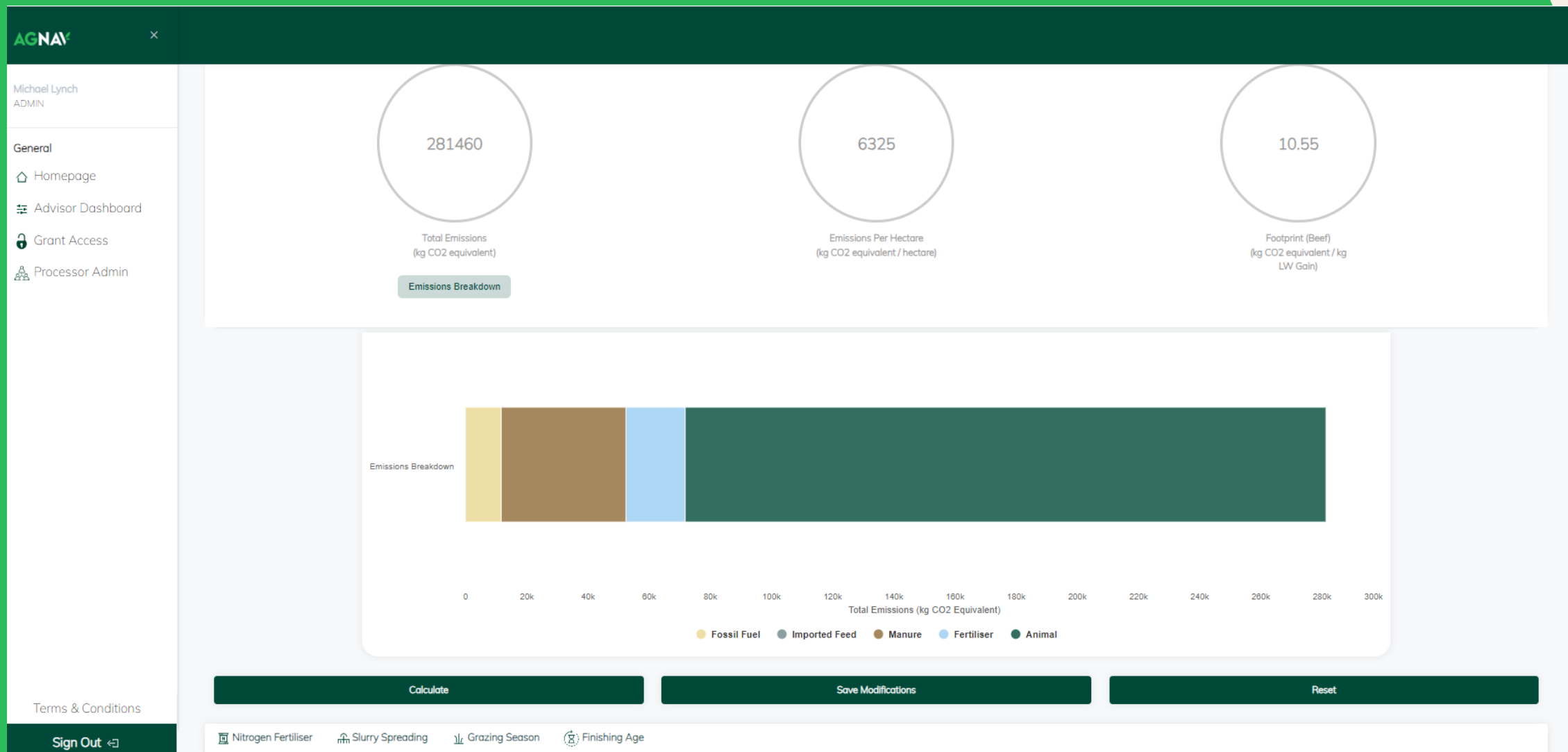
	Dairy Cows	Suckler Cows	0-12 Months	13-24 Months	25-36 Months	Bulls
Jan	0	52	52	22	3	2
Feb	0	49	48	9	3	2
Mar	0	48	54	9	3	2
Apr	0	52	53	42	1	2
May	0	53	54	43	2	2
Jun	0	53	52	44	2	2
Jul	0	53	53	44	2	2
Aug	0	53	54	44	2	2
Sep	0	53	54	44	2	2
Oct	0	53	54	29	2	1
Nov	0	50	54	24	2	1
Dec	0	50	54	24	2	1

Production

Fertilizer and Lime

Terms & Conditions

Sign Out



AGNAV

×

Michael Lynch
ADMIN

General

Homepage

Advisor Dashboard

Grant Access

Processor Admin

Terms & Conditions

Sign Out

Calculate

Save Modifications

Reset

Nitrogen Fertiliser

Slurry Spreading

Grazing Season

Finishing Age

Reduce Fertiliser Use

Total %

0%

0

50

100

150

200

100

71 kg N / hectare

Change Fertiliser Type Use

Progress:

100% Usage

Urea

0%

22%

100%

0

25

50

75

100

22

Protected Urea

0%

0%

100%

0

25

50

75

100

0

Other N Fertiliser

0%

78%

100%

0

25

50

75

100

78

Urea

Protected Urea

Other N F

22

0

78

AGNAV

16

AGNAV

×

Michael Lynch
ADMIN

General

Homepage

Advisor Dashboard

Grant Access

Processor Admin

Terms & Conditions

Sign Out

Calculate

Save Modifications

Reset

Nitrogen Fertiliser

Slurry Spreading

Grazing Season

Finishing Age

Progress:

100% Usage

*Only Applies if storage of liquid slurry has been reported.

Spring:

0%60%100%

0255075100

60%

60

Select Method:
Splash Plate

Summer:

0%30%100%

0255075100

30%

30

Select Method:
Splash Plate

Autumn:

0%10%100%

0255075100

10%

10

Select Method:
Splash Plate

Winter (January Only):

0%0%100%

0255075100

0%

0

Select Method:
Splash Plate

Spring

Summer

Autumn

Winter

AGNAV

17

AGNAV

×

Michael Lynch
ADMIN

General

Homepage

Advisor Dashboard

Grant Access

Processor Admin

Terms & Conditions

Sign Out

Calculate

Save Modifications

Reset

Nitrogen Fertiliser

Slurry Spreading

Grazing Season

Finishing Age

*Average Turnout and Housing

Suckler Cows

Turnout to Housing

10-MAR17-NOV

Weanlings / Yearlings / Stores

Turnout to Housing

11-FEB22-NOV

Finishing Cattle (Steers & Heifers)

Turnout to Housing

05-MAR05-NOV

Grazing Seasons

Suckler Cows

Weanlings / Yearlings / Stores

Finishing Cattle (Steers & Heifers)

Jan

Mar

May

Jul

Months

● Production Year

AGNAV

18

AGNAV ×

Michael Lynch
ADMIN

General

- Homepage
- Advisor Dashboard
- Grant Access
- Processor Admin

Terms & Conditions

Sign Out ↶

CalculateSave ModificationsReset

Nitrogen Fertiliser

Slurry Spreading

Grazing Season

Finishing Age

WARNING: Increasing Average Finishing Age may result in a change in Feeding System and a presumed introduction of additional concentrates fed indoors

1 Steers:

19 Months21 Months23 Months

1920212223

21 Months

21

6 Heifers:

20 Months22 Months24 Months

2021222324

22 Months

22

AGNAV

19

AGNAV

×

Michael Lynch
ADMIN

General

Homepage

Advisor Dashboard

Grant Access

Processor Admin

Terms & Conditions

Sign Out

Calculate

Save Modifications

Reset

Nitrogen Fertiliser

Slurry Spreading

Grazing Season

Finishing Age

Reduce Fertiliser Use

Total %

0%

100%

200%

0

50

100

150

200

100

71 kg N / hectare

Change Fertiliser Type Use

Progress:

100% Usage

Urea

2%

100%

0

25

50

75

100

2

Protected Urea

0%

98%

0

25

50

75

100

98

Other N Fertiliser

0%

100%

0

25

50

75

100

0

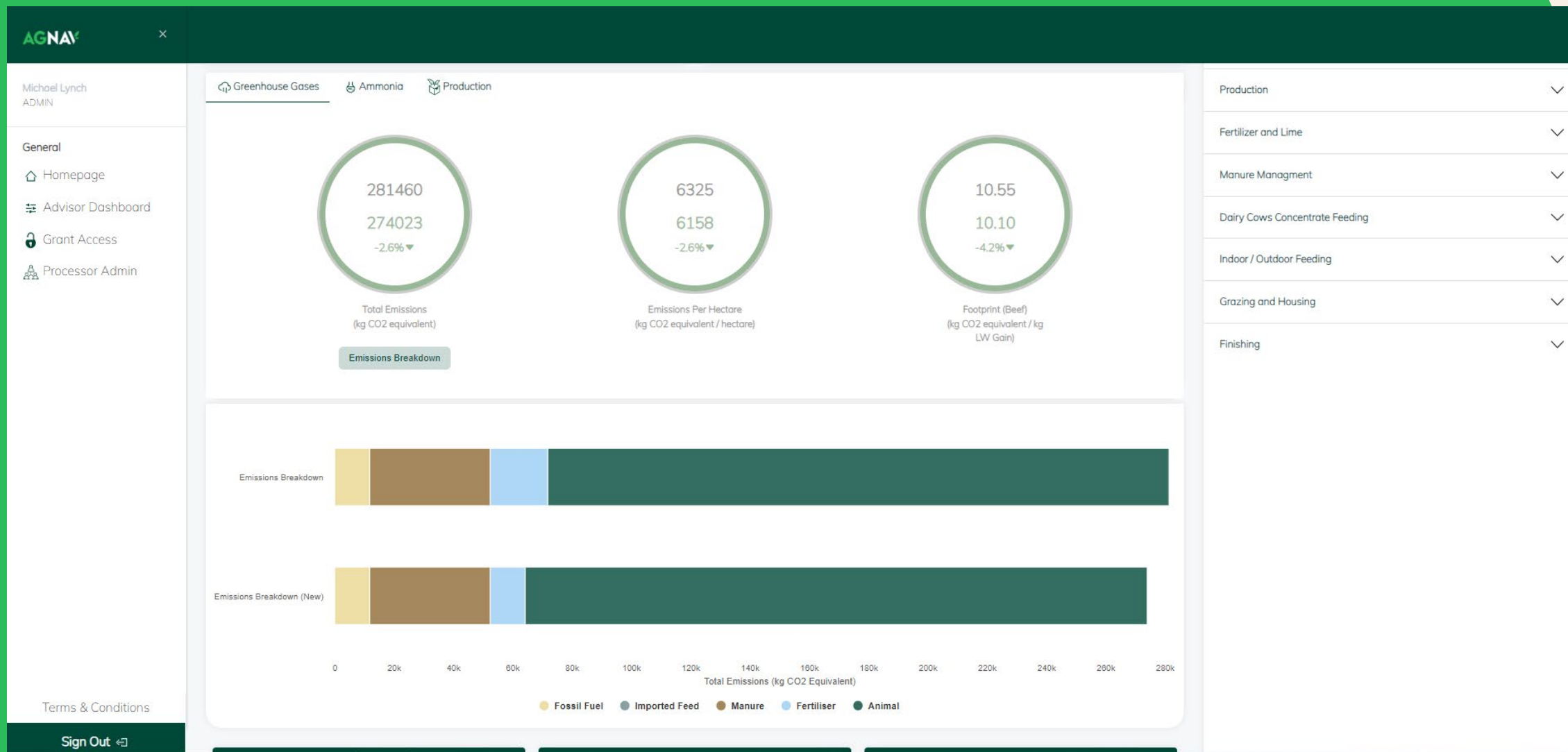
Urea

Protected Urea

Other N F

AGNAV

20



AGNAV

MY FARM PLANADD ACTIONSLOG OUTPROFILE

Sustainability actions

Search for sustainability actions...

Hide filters

Select a theme

1. Gaseous Farm Emissions

Select an action area

2. Forecaster Tool Actions

Reset filters

Key/Legend:

Environmental Benefit

Economic Benefit

Implement Practices to Achieve Optimal Grazing Season Length

Benefits: € € € €

COMPLETED - 22/03/2023

Quick Repeat

View action details

Reduce Chemical Nitrogen Usage

Benefits: € € € €

COMPLETED - 16/04/2024

Quick Repeat

View action details

Use Protected Urea

Benefits: € € € €

MORE DETAILS REQUIRED

View action details

AGNAV

MY FARM PLANADD ACTIONSLOG OUTPROFILE

Use Protected Urea

Back to Farm Plan

Guidance / Benefits

Guidance

Consider using protected urea to reduce nitrogen losses and improve fertiliser efficiency. This fertiliser releases nitrogen more slowly, reducing the amount of nitrogen lost to the environment. Apply protected urea at the recommended rate and time to achieve optimal growth.

Additional information

Benefits: € € € €

Expires: After 1 Year

Further Resources

Protected Urea

Target Completion Date

13/05/2024

Suggested Actions (please select and/or add Action Notes below)

Maximize the use of protected urea on the farm to reduce greenhouse gas emissions.

Order protected urea from the merchant for next year.

Replace all straight nitrogen with protected urea.

Replace urea with protected urea.

Replace CAN with protected urea.

Trial the use of protected urea on a section of the farm.

AGNAV

Ongoing Developments

- Further **Forecaster functions**:
 - Genetic impact on Methane Efficiency
 - Feed additives
 - Concentrate feed
 - ...
- Integration with Beef and Dairy Processor Sustainability Schemes

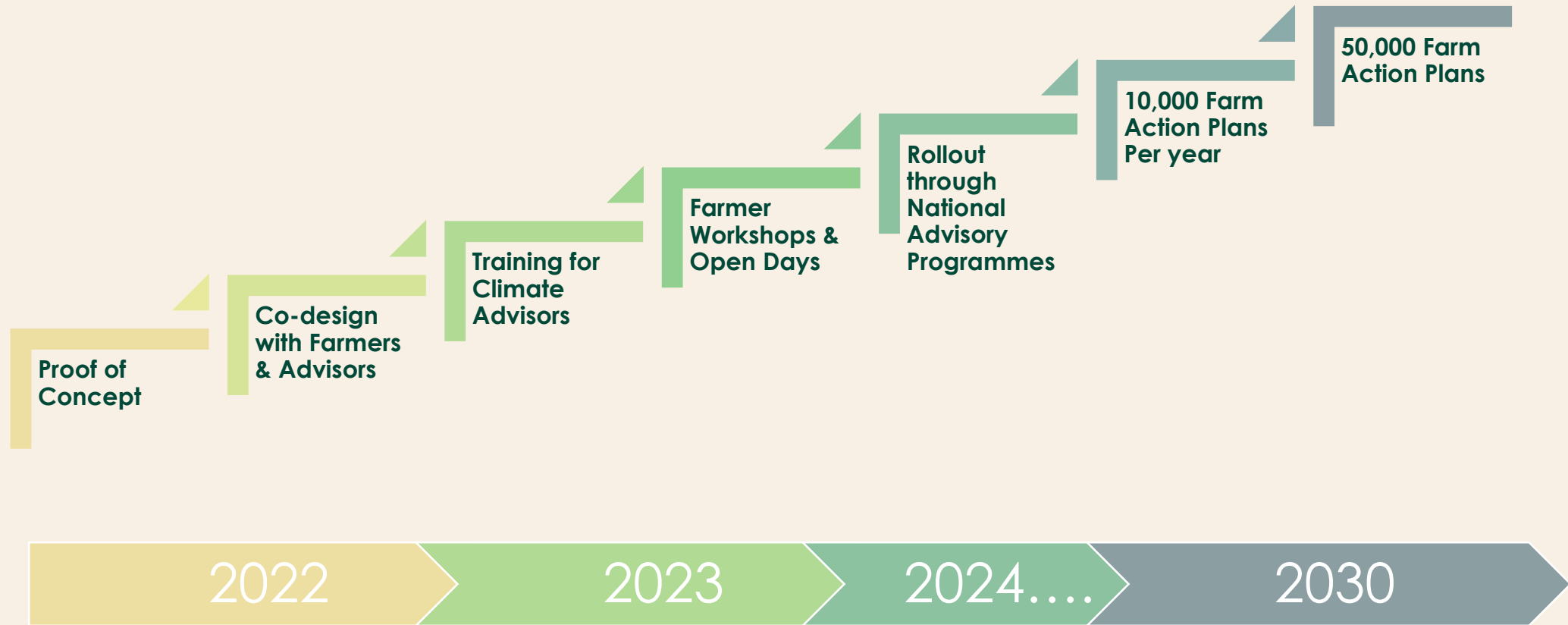


Future Developments

- Additional **indicators**:
 - Carbon sequestration
 - Biodiversity
 - Water quality
 - Economics of Climate Actions at farm level



Progress to data ... future plans



Extending to other domains

- High demand from other **enterprises**:
 - Sheep
 - Tillage
 - Pigs
 - Poultry
 - Horticulture
 - Forestry
- All LCA models used must be peer reviewed
- Routine model updates – every 12 months



Key Benefits

- **Farmers are requesting guidance and support** to deliver improvements.
- **Maximises use of existing databases** in the agri sector (verified data).
- Opt in, - All subject to **farmers permission**.
- **Scientific oversight** for development of **robust and accurate** system.
- **No duplication** for farmers, - one source of the truth.
- **Freely available to all farmers.**



Thank you for your attention

