



**UPDATE – for period 19<sup>th</sup> – 25<sup>th</sup> April 2008**

**1 Important Dates**

- ✚ **Thursday 1<sup>st</sup> May** at the O’Callaghan Alexander Hotel Dublin
  - 10:30 ICBF Board meeting
  - 12:15 Event to mark the First Ten Years of ICBF Operations
  - 14:30 ICBF AGM.
- ✚ **8<sup>th</sup> May** – Teagasc, Grange open day.
- ✚ **16<sup>th</sup> to 20<sup>th</sup> June** – ICAR and Interbull meetings, Niagara Falls, USA.
- ✚ **20<sup>th</sup> June** - Farmfest '08, Teagasc Major Event of the Year, Athenry.
- ✚ **9<sup>th</sup> to 11<sup>th</sup> October** – World Holstein Friesian Conference hosted by Ireland at Killarney & Millstreet. For details see [www.ihfa.ie](http://www.ihfa.ie).
- ✚ **11<sup>th</sup> and 12<sup>th</sup> October** – International Beef Expo being hosted in Ireland at Kilkenny Mart.

**2 The First Ten Years**

- ✚ Next week Mary Coughlan the Minister of Agriculture will be joining us as we mark the first ten years of ICBF’s operations. This milestone in the development of ICBF comes at a time when the evidence of the positive impact of ICBF, especially on dairy cattle breeding, is very clear.
- ✚ The following graphs, which have been taken from the Annual Report for 2007 (on [www.icbf.com](http://www.icbf.com)) show the average genetic merit of Holstein bulls used in AI by year of their birth and include the bulls currently being tested through GENÉIRLAND®. The graphs show that the EBI of bulls being used is now increasing rapidly (€4 to €21 per year in the last four years), milk solids are increasing, the amount of water in milk is declining, calving interval is reducing and survival is at an all-time high. ICBF is proud of this achievement and appreciates the support of all those who have helped make it happen.

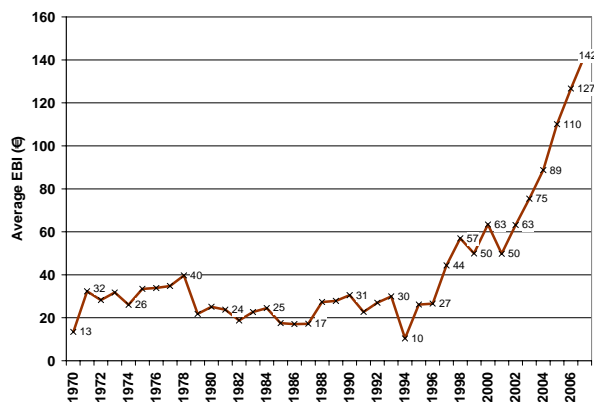


Figure 1. Trend in average EBI of Holstein Friesian bulls registered for use in AI, by year of birth.

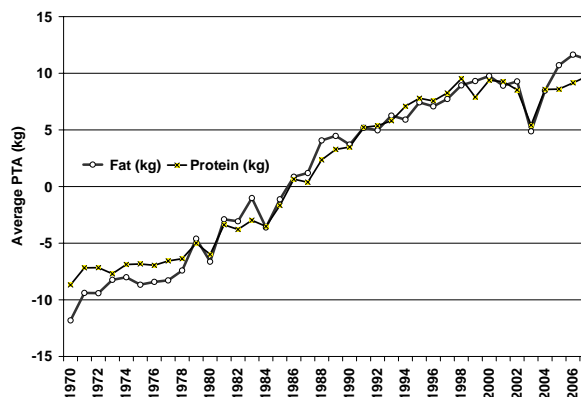


Figure 2. Trend in average PTA for fat (kg) and protein (kg).

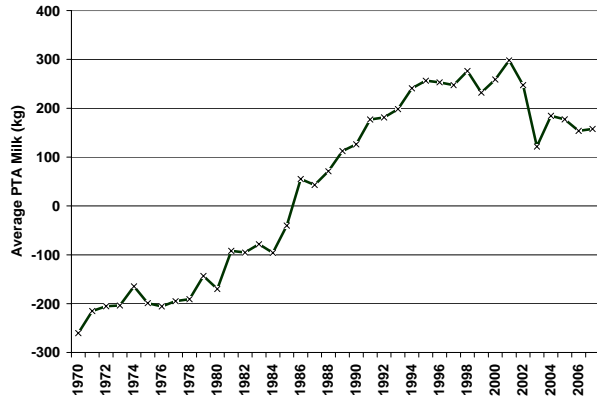


Figure 3. Trend in average PTA for milk weight (kg).

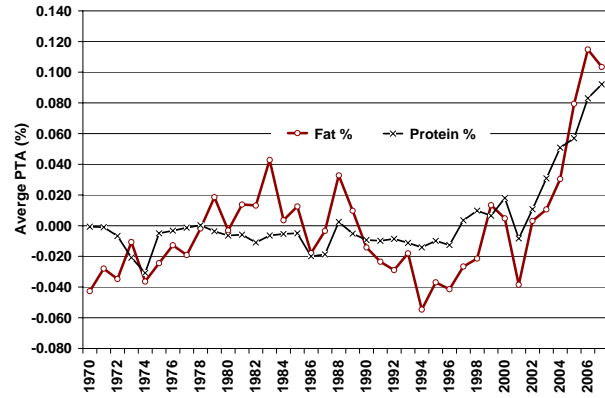


Figure 4. Trend in average PTA for fat % and protein %.

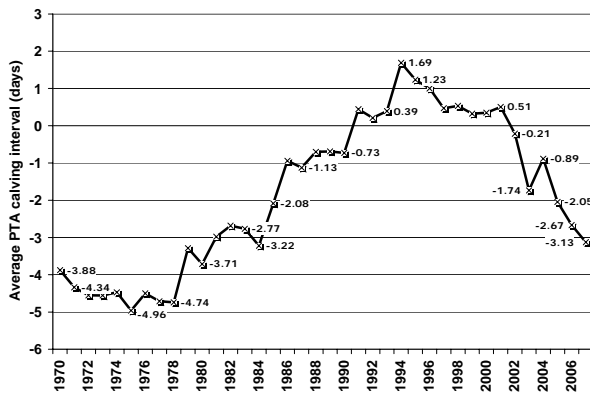


Figure 5. Trend in average PTA for calving interval (days).

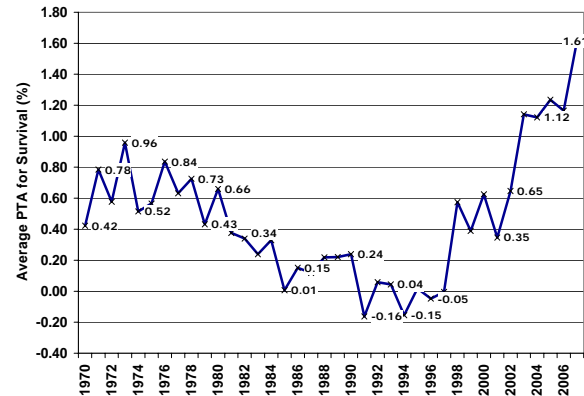
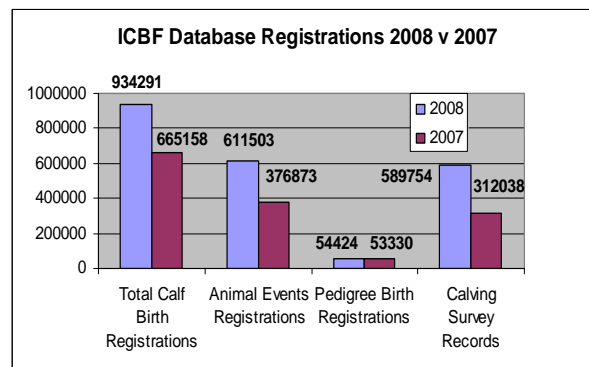
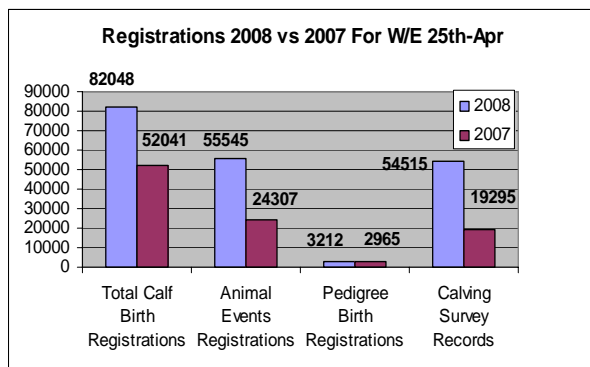


Figure 6. Trend in PTA for survival (%).

### 3 Annual Report for 2007

ICBF's Annual Report for 2007 is now available on the publications section of the ICBF Website ([www.icbf.com](http://www.icbf.com)).

### 4 Database Update



108,998 inseminations have been received so far in 2008 from the AI handhelds, compared with 72,607 in 2007 for the same period.



- ✦ ICBF have received 53,039 Suckler applicant details from DAF, which have been processed. Over 260,000 birth registrations from new Animal Events users have been received.
- ✦ Sire error batches continue to be issued to Suckler Scheme farmers. The first of the 'Pre-Weaning' forms will go out over the next couple of weeks.
- ✦ The latest Genetic Evaluation run is on-going and should be completed next week. The generation of evaluation reports will then follow.
- ✦ We have completed the implementation of a microwave broadband solution and, initially, it seems to have had a positive impact on user response times. However, it will take a couple of weeks before we can make a full assessment.

## 5 Tully

- ✦ NCBC have purchased Friarstown Elpremier G033 an Angus bull from the November 2007 intake. This brings to 8 the number of bulls that will enter AI from this intake.
- ✦ Applications for the next intake to Tully have been sent out to breeders and a list was also sent out to breed societies.
- ✦ A meeting of the Tully health committee was held on the 28-4-08 to finalize the health testing protocol for the next intake to Tully. The committee also finalized the investigation into the IBR out-break in March.

## 6 ICBF Brands

We have completed an updating of the three brands being used by ICBF as follows:

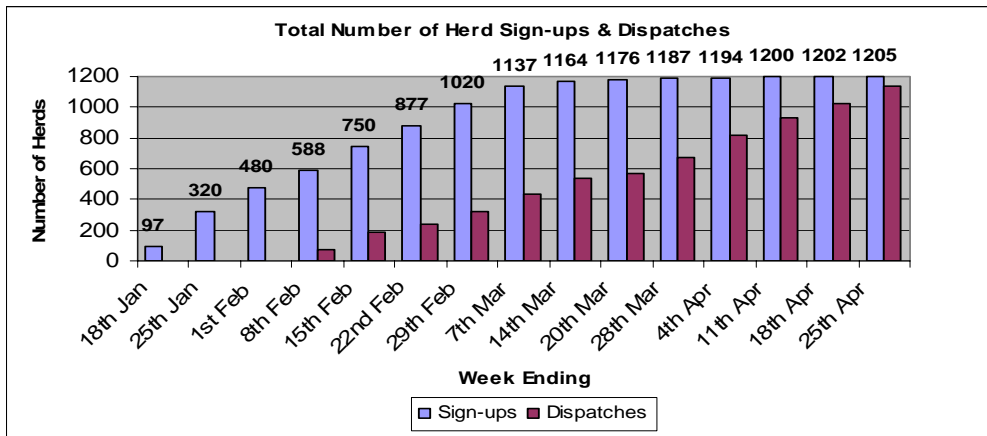


## 7 GENEIRELAND®

### Dairy Spring 2008



- ✦ Dispatch is now almost complete. Some 70 herds to go.



- ✦ There are a small number of bulls that haven't reached the 700 doses mark, so if there are any herd-owners looking for extra straws or wish to sign up we will still consider their request, especially for the red breeds.



## Beef

- ✚ 255 Suckler Herds signed up to Gene Ireland since January 2008.
- ✚ 4325 straws packed and sent to farmers.
- ✚ Working on Missing Sire and Insemination records.
- ✚ Preparations underway for the Autumn programme.

## 8 Milk Recording

| National Milk Recording Statistics - Herds, Cows & EDIY 25/04/08 |                                   |                             |              |                                      |                            |             |
|--|-----------------------------------|-----------------------------|--------------|--------------------------------------|----------------------------|-------------|
| Milk Recording Organisation                                      | Total Herds Recorded YTD 25/04/08 | No. EDIY Herds YTD 25/04/08 | % Herds EDIY | Total No. Cows Recorded YTD 25/04/08 | No. EDIY Cows YTD 25/04/08 | % Cows EDIY |
| Progressive  | 1,803                             | 540                         | 30%          | 120,271                              | 35,780                     | 30%         |
| Dairygold  | 1,242                             | 348                         | 28%          | 73,391                               | 21,598                     | 29%         |
| Kerry  | 902                               | 126                         | 14%          | 48,925                               | 6,953                      | 14%         |
| SWS  | 834                               | 101                         | 12%          | 43,728                               | 5,336                      | 12%         |
| Tipperary  | 126                               | 40                          | 32%          | 7,522                                | 2,616                      | 35%         |
| Arrabawn   | 100                               | 78                          | 78%          | 6,138                                | 4,794                      | 78%         |
| Connacht   | 115                               | 32                          | 28%          | 6,007                                | 1,546                      | 26%         |
| Donegal  | 6                                 | 6                           | 100%         | 432                                  | 432                        | 100%        |
| <b>Total</b>   | <b>5,128</b>                      | <b>1,271</b>                | <b>25%</b>   | <b>306,414</b>                       | <b>79,055</b>              | <b>26%</b>  |

| Recorded Cows by Milk Recording Organisation - Year on Year Comparison |  |  |  |  |
|--|--|--|--|--|
| Milk Recording Organisation  | YTD 2006 Cows Recorded 01/01/06 - 25/04/06 | YTD 2007 Cows Recorded 01/01/07 - 25/04/07 | YTD 2008 Cows Recorded 01/01/08 - 25/04/08 | 2008 vs 2007 Year on Year Difference (%) |
| Progressive  | 108,363                                    | 111,758                                    | 120,271                                    | 7.1%                                     |
| Dairygold  | 66,371                                     | 72,479                                     | 73,391                                     | 1.2%                                     |
| Kerry  | 47,883                                     | 48,498                                     | 48,925                                     | 0.9%                                     |
| SWS  | 42,131                                     | 44,724                                     | 43,728                                     | -2.3%                                    |
| Tipperary  | 5,986                                      | 7,403                                      | 7,522                                      | 1.6%                                     |
| Arrabawn   | 5,255                                      | 6,944                                      | 6,138                                      | -13.1%                                   |
| Connacht   | 5,438                                      | 5,796                                      | 6,007                                      | 3.5%                                     |
| Donegal  | 535  | 589  | 432  | -36.3%                                   |
| <b>Total</b>   | <b>281,962</b>                             | <b>298,191</b>                             | <b>306,414</b>                             | <b>2.7%</b>                              |

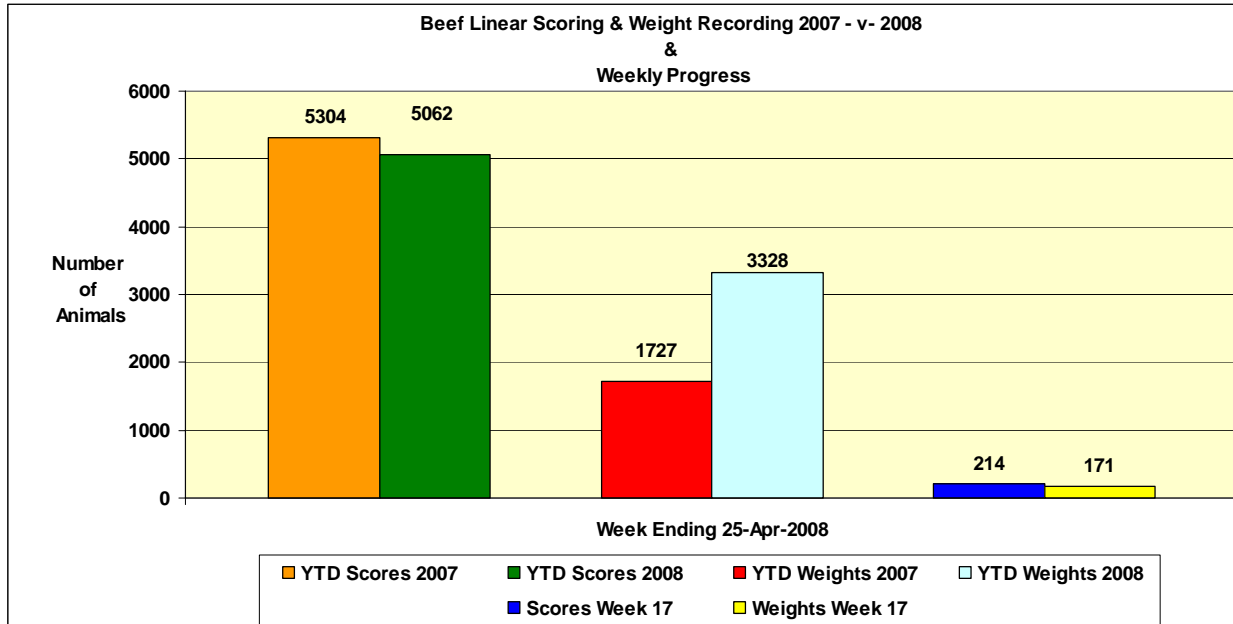
## 9 Genetic Evaluations

- ✚ All evaluations have now been completed and the process of uploading and parent averaging has commenced. A provisional dairy extract for AI bulls will be made available to the industry next week. This evaluation will also form the basis for the new Euro-Star indexes and herd reports which will be available in the coming weeks. Work on provision of supplementary information on the sires in the calving evaluation similar to the information provided on the beef performance evaluation is nearing completion.
- ✚ During the week staff from the evaluation team held fruitful discussions with researchers at Teagasc Grange on a range of beef index related issues. Initial results arising from the trial set up to validate the beef carcass index are positive and will be presented by Teagasc at their open day in Grange on the 8<sup>th</sup> May.



✦ Research continues on work identified in the dairy and beef evaluation consultation meetings.

## 10 GROW – Linear Scoring & Weight Recording



Brian Wickham Ph.D. Chief Executive Irish Cattle Breeding Federation Soc. Ltd, Highfield House, Shinagh, Bandon, Co. Cork, Ireland, Phone office +353 (0)23 20222, mobile +353 (0)86 826 9911 Fax office +353 (0)23 20229 E-Mail [bwickham@icbf.com](mailto:bwickham@icbf.com) ICBF Web site [www.icbf.com](http://www.icbf.com) Assistant: Mary Madden.