

## 1. Important Dates

- ✚ **Thursday 19<sup>th</sup> February 2009.** Dairy Genetic Evaluation Consultation Meeting, Moorepark, 10:30 – 14:00.
- ✚ **Thursday 19<sup>th</sup> February 2009.** ICBF Board Meeting / Conference Call, Moorepark, 3:00pm – 5.00pm. (*This replaces the Board Meeting scheduled for Thursday 5<sup>th</sup> March in Portlaoise*).
- ✚ **Thursday 5<sup>th</sup> March 2009.** Sheep Ireland Board Meeting, Portlaoise. 14:00 – 16:30.

## 2. Board Meetings – 22<sup>nd</sup> January

### ICBF

- ✚ The Board endorsed the following recommendations arising from Dairy Genetic Evaluation Consultation Meeting held on Wednesday 21<sup>st</sup> January 2009:
  - That the dairy genetic evaluation system be amended to incorporate genomic data for those bulls for which 50K Illumina genotypes are available to ICBF.
  - Those bulls in the process of being progeny tested are more heavily used to breed dairy replacements and enable the potential of genomic selection to start being realised on Irish dairy farms.
  - That it be a strong recommendation to dairy farmers that partially progeny tested bulls, for which genomic data has increased the reliability of the EBI, be used in teams to reduce risk.
  - That ICBF establishes a consistent terminology for communicating the key considerations when utilizing genomic information in cattle breeding decisions.
  - That the Active Bull list be amended to incorporate teams of bulls that are partially progeny tested and for which genomic data has increased the reliability of their EBI.
  - That ICBF recommends that the regulations governing the use of dairy bulls in AI facilitate increased usage of bulls that are partially progeny tested and for which genomic data has increased the reliability of their EBI.
- ✚ The Board also agreed the following:
  - That the Best Practise in Cattle breeding promotional campaign for 2009 be approved subject to detailed agreement with service providers and confirmation of funding.
  - The Board approves the G-EN-IR-ELAND<sup>®</sup> Beef progeny test budget for 2009, subject to final agreement on funding, and the completion of a review of G-EN-IR-ELAND<sup>®</sup> Beef progeny testing in order to ensure a long term viable program which achieves optimal returns for Irish beef farming.
- ✚ The next Board meeting will coincide with the next Dairy Industry Genetic Evaluation consultation meeting

### Sheep Ireland

- ✚ The Interim Sheep Board has established the company Sheep Database Ltd to provide a legal entity to direct future activities. Sheep Database Ltd will trade as Sheep Ireland. This is an important step towards establishing a permanent structure for Irish sheep breeding. For the immediate future the Interim Sheep Board will continue as the Board of Sheep Database Ltd. The next steps towards establishing the permanent structure will include; completing the development of the LambPlus service, establishing services for Flock Books and determining the structure and appointment process for the permanent Board of Sheep Database Ltd.
- ✚ Pat Donnellan has been appointed Project Manager for Sheep Ireland and he provided a progress report. A copy of his report can be found in the publications section of the Sheep Ireland website ([www.sheep.ie](http://www.sheep.ie)).

- ✚ The Board authorised the establishment of a bank account for Sheep Database Ltd.
- ✚ Consultations with Flock Books are to be held over the next six weeks.

### 3. Irish Grasslands Assn – Lifetime Merit Award for Paddy O'Keefe

This week the Irish Grasslands Association made a Lifetime Merit Award to Paddy O'Keefe. On behalf of everyone at ICBF I congratulate Paddy and thank him for his large contribution to Irish Cattle Breeding dating from long before ICBF was formed.

As a young Geneticist working in New Zealand from the mid 1970's, I often had the pleasure of meeting with a group of Irish farmers on a tour led by Paddy. Then, as now, Paddy was innovative, communicative and constantly looking for ways to make farming in Ireland more profitable for the farmer. We can all learn a lot from the example that Paddy provides. I would sum it up this way:

- Focus on the issue, not the person
- Identify what is important, ignore the unimportant,
- Examine the options for improvement with an open mind,
- Communicate with similarly open minded people,
- Decide on the best course of action and act, and then
- Move to the next issue, or process several issues in parallel, and repeat the cycle for many many years.

### 4. Interbull and Interbeef

- ✚ Interbull is holding a workshop devoted to genomic selection on Tuesday and Wednesday next week in Uppsala, Sweden. Ireland will be represented by Donagh Berry, Andrew Cromie and Brian Wickham. A report of the workshop will be provided in the Update next week.
- ✚ The Interbeef Working Group will meet on Monday next week in Uppsala with Ireland being represented by Thierry Pabiou and Brian Wickham. We expect to see results of the latest research on international evaluations for beef traits and breeds. Also, there will be a progress report on the establishment of a database at the Interbull centre to support routine international evaluations for beef cattle.

### 5. ICBF Approval as Competent Authority

ICBF has been approved by DAFF as Competent Authority for approving bulls for use in AI. This will facilitate a streamlining in the process for issuing AI codes and takes effect on 21<sup>st</sup> January 2009.

### 6. Survey of Readers

Thanks to all those readers who have completed the on-line survey. A copy of the results, so far, can be found in the publications section of both websites – [www.icbf.com](http://www.icbf.com) and [www.sheep.ie](http://www.sheep.ie).

### 7. Lambplus

- ✚ Inventory Screen Updated
  - Date of Birth & Sire & Dam fields may now be edited.
  - 80% 'Lock' function put in place. Without 80% of a Flockowner's data being completed, other screens are not accessible.
- ✚ Lambing, Mating & Rearing Screens released
  - Feedback is being received & Screens updated accordingly.



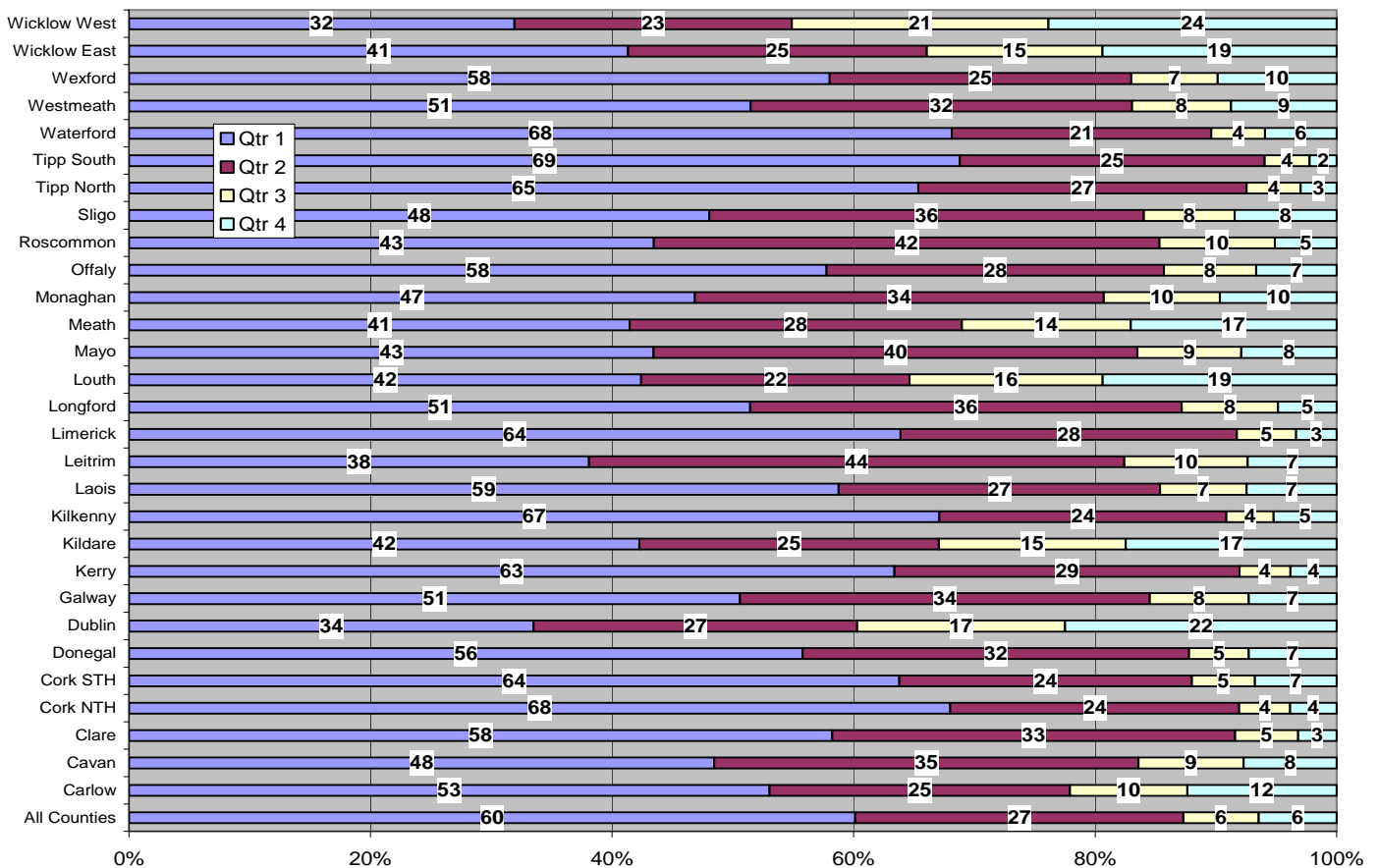
- ✚ Rams in the MALP flocks have been DNA typed.
- ✚ Plan for recording NSIS ID data on MALP Rams & Ewes is underway. This work will allow subsequent DNA typing of Ewes & parentage linkage to lambs.
- ✚ Lambing, Rearing & Mating recording sheets for Lambplus Paper clients are currently being developed.

## 8. Tully

- ✚ A Tully Advisory Committee Meeting will take place in Tully on Tuesday February 3<sup>rd</sup> at 11 0' clock. Issues to be discussed at the meeting include an update on the current intake of bulls and the best way forward for attracting the top Beef Bulls in Ireland into Tully for performance testing.
- ✚ The next weighing of the bulls will take place on 6<sup>th</sup> February with all bulls been washed at present.

## 9. Calving Pattern in Dairy Herds

The following graph shows the calving pattern by county and quarter (for the last year) for dairy herds recorded on the database. While 60% of dairy cows calve in the first quarter (first three months) there is considerable variation between counties. Some show almost a uniform pattern from quarter to quarter (eg Wicklow, Dublin) while others show condensed spring calving (eg Tipperary, Waterford, Cork and Kilkenny). It is those late spring and summer calvings (2<sup>nd</sup> quarter & 3<sup>rd</sup> quarter) that represent a major lost opportunity to produce milk profitably.



## 10. GENEIRELAND®

### Dairy

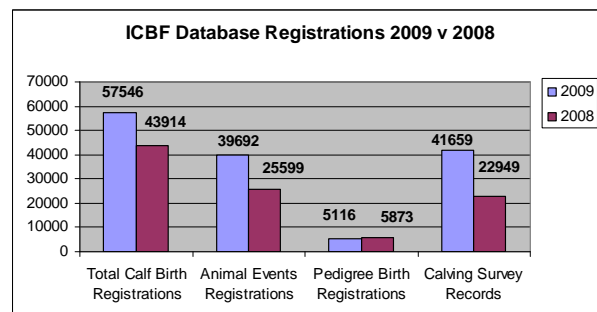
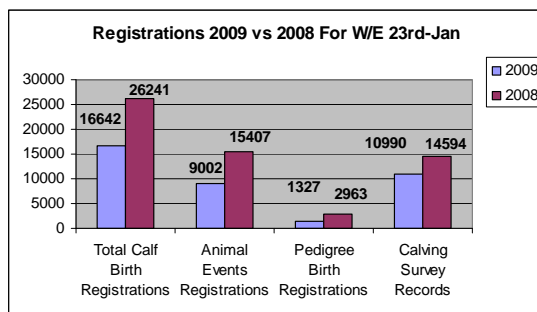
- ✚ 1,200 letters were sent out this week to the participants of the Spring 2008 programme, asking if they are interested in continuing with it for this coming spring. Copy of letter attached.
- ✚ Included was a draft list of potential bulls based on current EBI figures (ancestry average). Genomic data is currently being analysed for these bulls and a revised list of potential test bulls will be available mid-Feb. This list is also available on the ICBF website (<http://www.icbf.com/services/geneireland/dairy/intakes.php>).
- ✚ Target EBI for the HOFR's for the Spring 2009 programme is €150-155.
- ✚ Sign-ups have commenced, with 51 to date. Sign-up form also available on the ICBF website.

### Beef

- ✚ Herd Sign ups are at 61 herds compared to 49 for the same week in 2008
- ✚ Interesting new Tully tested bulls set to join the panel. See pics below.



## 11. Database



- ✚ 10,216 inseminations have been received so far in 2009 from the AI handhelds, compared with 11,750 in 2008 for the same period.
- ✚ The AI 2009 software migration has continued, with the Dovea and Eurogene groups migrated this week. PG will now follow in two weeks time.

- ✚ The 2009 born calves for the suckler cow scheme have begun to be registered. The Animal Events notebooks have begun to be issued this week, and will continue for the next number of weeks. There is also a lot of activity in relation to the 2008 born calves. The number of calves with a meal feeding introduction has increased to 726,000, with just over 616,000 of these having been weaned.
- ✚ The revamp of the Milk Recording system continues. The specifications were reviewed in detail with PG yesterday, and programming will begin next week.
- ✚ This week, work has continued on the Sheep application, with a continuous stream of good feedback from users, which is being incorporated wherever possible.

## 12. Genetic Evaluations

- ✚ All dairy and beef evaluation files are now loaded to the database and the process of sub-index calculating and parental averaging is underway.

### Dairy

- ✚ An unofficial provisional dairy AI bull file was sent to the industry today.
- ✚ **Official** new evaluations for *proven* AI bulls will be available on Monday 26th January in the Bull search and on the website files.
- ✚ Official evaluations for Genomically Selected Bulls and all other animals will be available on Monday 16<sup>th</sup> February.

### Beef

- ✚ It is planned that a beef AI bull file will be ready for distribution to the industry early next week.
- ✚ The process of calculating the percentiles for the creation of the Euro-stars can only commence once the parental averaging steps have finished hence the slight delay in release of proofs relative to the dairy release.
- ✚ Foreign EBV files have been received from SAC for the UK Limousine in the past week. While their arrival was too late for incorporation into the current run it is expected that they can be incorporated for the second evaluation run of 2009 at the end of April.

## 13. GROW – Linear Scoring & Weight Recording



- ✚ Overall 2008 was an outstanding year in terms of the level of weight recording. The number of pedigree animals scored was increased by 1,000 (10%) and the number of cattle scored & weighed was increased by 5,000 (100%).

	Jan - Dec 2007	Jan - Dec 2008
Animals Scored	10,530	11,865
Animals Weighed	4,344	9,469
% Animals Scored & Weighed	40%	80%

- ✚ The new GROW report is awaiting final development work to be completed on it.
- ✚ It will then be sent out to all breeders following a visit from a Scorer.
- ✚ Crucially, it will show a Breeder how many of the animals that they put forward for scoring & weighing will have their own data included in their evaluations.

This will depend on: 1. Age – 150-300 days is desired age window.

2. Group size – Group of 5 is minimum required group size.



- ✚ A constant issue following a Scoring session is that a Breeder assumes that all data recorded is subsequently used in genetic evaluations. This is not always the case, however up to now this has not been clearly communicated to Breeders. The new GROW report will address this issue.
- ✚ This report will also be available on the web to the herd owner.

## 14. HerdPlus

### Herd Ahead Health Project

- ✚ ICBF and TEAGASC are collaborating in a research project with the goal of improving dairy farm profitability through better control of a range of diseases.
- ✚ The 'HERD AHEAD' project, has been initiated to pilot and evaluate farm-specific health statements relating to infectious diseases.
- ✚ The aim is to make these health statements available through ICBF's HerdPlus<sup>®</sup> service. At the end of the project we envisage a system which allows farmers to continuously monitor infectious disease on their farms and also allow farmers to trade safely with farmers of similar health status.

### What is involved?

1. Farmers partaking in the programme will be visited at least once over the duration of the project (2009-2010) in order to facilitate completion of a biosecurity questionnaire and collection of samples.
2. At least 5 unvaccinated weanlings between 9 and 12 months of age (approximately) should be available for blood sampling during the farm visit. (Unvaccinated = have not been vaccinated for BVD, IBR or Leptospirosis).
3. Milk samples will be used to determine the immune status of the lactating herd with regard to non-regulatory infectious diseases, to include but not limited to, BVD, IBR and Leptospirosis.
4. Sampling kits will be supplied to all participating farmers and each participant will be required to submit bulk milk samples to Moorepark on at least 4 occasions throughout the year. Samples may also be sourced from your co-op and milk recording service provider.
5. Results will be made available to farmers on **COMPLETION** of the trial, as will a health statement specific to your farm. This statement will outline the health status of your herd with regard to non-regulatory infectious diseases over the trial period. Results will not be available during the trial period.
6. In order to design a practical and worthwhile health statement applicable to Irish farms, it is necessary to conduct a research across a number of farms nationally.  
We plan to recruit some 250 farms in this research. These 250 have to be a random and representative sample (a national spread of farmers) to avoid any selection bias. This week we have randomly selected and written to 500 HerdPlus clients asking them if they would participate.
7. As of Friday 23<sup>rd</sup> January we have had very good response with 94 farmers signed up to the scheme already. We don't envisage any difficulty in getting the required 250 on board.

### Dairy Cow Reports/ Personalised Pocket books / Expected Calving Reports

- ✚ HerdPlus office completed the dispatch of all 3,500 HerdPlus Dairy packs this week.
- ✚ Each pack contains following;
  1. Dairy Cow Report (New 09)
  2. Personalised pocket book
  3. Expected Calving Report

### Milk Recording Annual Reports

- ✚ Dry offs are in for some 2,000 Milk Recorded herds and ICBF will be generating Milk Recording Annual Reports for these at the weekend.
- ✚ The report is triggered if sufficient “dry offs” are in the database for the herd.

### 15. Milk Recording

National Milk Recording Statistics - Herds, Cows & EDIY 23/01/09						
Milk Recording Organisation	Total Herds Recorded YTD 23/01/09	No. EDIY Herds YTD 23/01/09	% Herds EDIY	Total No. Cows Recorded YTD 23/01/09	No. EDIY Cows YTD 23/01/09	% Cows EDIY
Progressive	514	78	15%	29,511	4,460	15%
Dairygold	109	6	6%	5,506	343	6%
Kerry	98	1	1%	4,565	132	3%
SWS	153	1	1%	6,674	276	4%
Tipperary	13	1	8%	615	23	4%
Arrabawn	0	0	0%	0	0	0%
Connacht	51	0	0%	1,894	0	0%
Donegal	0	0	0%	0	0	0%
<b>Total</b>	<b>938</b>	<b>87</b>	<b>9%</b>	<b>48,765</b>	<b>5,234</b>	<b>11%</b>

Recorded Cows by Milk Recording Organisation - Year on Year Comparison			
Milk Recording Organisation	YTD 2008 Cows Recorded 01/01/08 - 23/01/08	YTD 2009 Cows Recorded 01/01/09 - 23/01/09	2009 vs 2008 Year on Year Difference (%)
Progressive	32,727	29,511	-10.9%
Dairygold	4,306	5,506	21.8%
Kerry	5,779	4,565	-26.6%
SWS	7,022	0	0.0%
Tipperary	344	615	44.1%
Arrabawn	264	0	0.0%
Connacht	1,742	1,894	8.0%
Donegal	0	0	0.0%
<b>Total</b>	<b>52,184</b>	<b>42,091</b>	<b>-24.0%</b>

National Milk Recording Averages by Province - 10 day Period 13/01/09 to 23/01/09								
Provincial	No. Herds Recorded	No. Cows Recorded	Average Herd Size	Average 24hr Milk kg/Cow	Average Fat %	Average Protein %	Average F + P kg	Average SCC
Munster	265	12,794	48	15.5	4.13	3.41	1.17	299
Leinster	259	14,875	57	19.0	4.08	3.46	1.43	342
Connacht	58	2,497	43	16.6	3.86	3.38	1.20	327
Ulster	46	1,639	36	17.1	4.12	3.39	1.28	288

National Milk Recording Results by County - 10 day Period 13/01/09 to 23/01/09

	No. Herds Recorded	No. Cows Recorded	Average Herd Size	Average 24hr Milk kg/Cow	Average Fat %	Average Protein %	Average F + P kg	Average SCC
CARLOW	9	422	47	18.9	4.01	3.52	1.42	303
CAVAN	15	549	37	17.0	4.01	3.42	1.26	316
CLARE	4	123	31	14.6	3.96	3.47	1.08	160
CORK STH	126	5,512	44	16.1	4.14	3.42	1.22	285
CORK NTH	47	2,576	55	16.5	4.20	3.42	1.26	346
DONEGAL	3	136	45	13.1	4.18	3.30	0.98	229
DUBLIN	9	513	57	23.0	4.20	3.49	1.77	422
GALWAY	16	719	45	15.3	4.09	3.31	1.13	320
KERRY	24	1,091	45	16.1	3.99	3.36	1.18	381
KILDARE	9	464	52	22.2	4.00	3.51	1.67	366
KILKENNY	17	838	49	14.0	4.16	3.56	1.08	275
LAOIS	19	859	45	15.0	4.23	3.53	1.16	364
LEITRIM	7	254	36	15.6	3.84	3.28	1.11	219
LIMERICK	29	1,367	47	15.4	4.06	3.35	1.14	385
LONGFORD	4	143	36	15.3	4.18	3.44	1.17	373
LOUTH	34	1,730	51	30.9	3.96	3.43	2.28	311
MAYO	26	1,154	44	17.1	3.78	3.52	1.25	339
MEATH	61	4,454	73	19.0	4.02	3.50	1.43	402
MONAGHAN	28	954	34	21.1	4.16	3.46	1.61	320
OFFALY	10	478	48	15.1	4.23	3.47	1.16	357
SLIGO	9	370	41	18.4	3.73	3.41	1.31	431
TIPPERARY NTH	5	304	61	15.2	4.22	3.43	1.16	257
TIPPERARY STH	15	801	53	14.8	4.28	3.46	1.15	352
WATERFORD	15	1,020	68	15.6	4.16	3.40	1.18	223
WESTMEATH	16	969	61	19.1	4.35	3.51	1.50	405
WEXFORD	39	1,815	47	16.6	4.03	3.37	1.23	296
WICKLOW E	17	1,123	66	17.8	3.77	3.37	1.27	310
WICKLOW W	8	813	102	20.1	4.14	3.43	1.52	382
	No. Herds Recorded	No. Cows Recorded	Average Herd Size	Average 24hr Milk kg/Cow	Average Fat %	Average Protein %	Average F + P kg	Average SCC
National	621	31,551	51	17.5	4.07	3.43	1.31	326

## 16. Change in our phone numbers

The ICBF phone numbers have changed. Our new numbers have “88” added to them after the area code (023). Please amend your files as soon as possible. The old numbers will continue to work until May of 2009.

Old Number (example)	New Number (example)
Phone: 023 20222	023 88 20222
Fax: 023 20229	023 88 20229

Brian Wickham Ph.D. Chief Executive Irish Cattle Breeding Federation Soc. Ltd, Highfield House, Shinagh, Bandon, Co. Cork, Ireland, Phone office +353 (0)23 882 0222, mobile +353 (0)86 826 9911 Fax office +353 (0)23 882 0229 E-Mail [bwickham@icbf.com](mailto:bwickham@icbf.com) ICBF Web site [www.icbf.com](http://www.icbf.com)



«NID»

«FIRST\_NAME» «SURNAME»  
«ADDRESS1»  
«ADDRESS2»  
«ADDRESS3»

20<sup>th</sup> January 2009

Dear Herd-Owner

***GENE IRELAND<sup>®</sup> Spring 2009 AI Programme***

There are two major changes to the GENE IRELAND<sup>®</sup> programme which come into effect from this spring:

- NDP funding has been removed
- The introduction of Genomic Selection (Holstein Friesian only)

The removal of NDP funding means there will be **NO monetary incentives** (for inseminations, calvings and milk recorded heifers) paid to participants of the Spring 2009 programme and there after.

On the other hand, the introduction of Genomic Selection allows for greater selection intensity, resulting in young bulls with **higher and more reliable EBI's**.

Enclosed you will find a brochure with details of the Spring 2009 scheme, including a sign-up form, and a list of the potential bulls with their current EBI's. We are still in the process of obtaining genomic data for these bulls, which will be included in the evaluation in February. Our target is to have a panel of bulls with an average EBI of **€150**. The cost remains at **€5** per straw.

If you are interested in continuing with the programme simply complete the enclosed form and return using the envelope provided. If you have any further queries, please contact ICBF (023 8820454 or 023 8820458) or text the word **BULL DAIRY** to 51101), or alternatively contact your local semen sales advisor.

Yours sincerely,



Brian Wickham  
Irish Cattle Breeding Federation  
*On behalf of all participating organizations*



**Table 1. List of potential Holstein Friesian Bulls for GENRE IRELAND Spring 2009 program.**

**The following list of bulls is a draft. Once genomic data has been added these bulls will be reassessed. The target average EBI is €150**

ANIMAL NUMBER	ANIMAL NAME	HOL	AI	SIRE	MGS	EBI	Milk			M kg	F kg	P kg	F%	P%	CI	SU%	CD%	Sire	Sire	Sire	Dam	Dam	Dam	BREEDER
							EBI	Milk	Fert									EBI	Milk	Fert				
CCF	CHURCHCLARA GOLDMINE	34%	Dovea	BCG	MYO	€132	€17	€87	-222	3.5	-1.0	0.26	0.14	-5.3	2.2	1.7	€129	€13	€98	€141	€47	€76	PHIL & MATT O'KEEFFE	
CXN	CORRINVILLE MOUN	100%	NCBC	LLO	FYG	€128	€59	€62	68	10.8	7.5	0.16	0.10	-3.2	2.1	2.8	€122	€53	€68	€140	€65	€56	TONY MURPHY	
DZE	BALLYKINASH DERMOT 569	63%	NCBC	HFL	BAV	€153	€36	€91	-29	11.5	2.8	0.26	0.08	-5.1	2.7	1.5	€167	€65	€70	€132	€7	€113	JIM DELAHUNTY	
FZI	BALLYKINASH FINTAN	59%	NCBC	HFL	HWT	€139	€41	€74	72	9.0	5.3	0.12	0.06	-4.3	2.0	1.6	€167	€65	€70	€110	€17	€78	JIM DELAHUNTY	
HXL	HILLSDALE HARRY	97%	NCBC	RUU	LLO	€135	€53	€62	119	9.5	7.5	0.09	0.08	-3.7	1.6	3.3	€160	€43	€73	€111	€63	€51	KEVIN HEGARTY	
LBN	LYNBROOK RONALDO 2	100%	Dovea	RXO	OJI	€167	€63	€73	373	11.3	11.9	-0.06	-0.01	-2.9	3.4	1.6	€215	€49	€122	€120	€77	€23	JOHN CUNNANE	
LDF	LISDUFF LEGACY	100%	Dovea	MCL	OJI	€137	€93	€16	478	15.9	16.8	-0.04	0.03	-0.2	1.3	1.5	€133	€85	€25	€143	€101	€8	JOHN J O'SULLIVAN	
LYO	LYNBROOK ROSCOE ET	100%	Dovea	S448	OJI	€122	€81	€27	395	10.9	14.9	-0.08	0.03	-0.8	1.6	4.2	€108	€80	€28	€137	€83	€26	JOHN CUNNANE	
MZK	MOOREPARK OLLIE 838	75%	NCBC	RMW	UYC	€156	€79	€75	96	13.7	10.2	0.20	0.14	-5.0	1.3	1.6	€154	€72	€70	€161	€86	€79	TEAGASC	
OCH	DOCHAS SAMMY 483	84%	NCBC	LLO	DNV	€136	€68	€57	113	11.0	9.3	0.12	0.11	-2.8	2.1	2.7	€122	€53	€68	€141	€82	€45	MICHAEL CASEY	
QWB	QUINNVIEW BRENDAN	97%	NCBC	MBH	NHS	€113	€56	€48	58	10.5	7.0	0.16	0.11	-2.7	1.4	2.2	€101	€32	€58	€124	€81	€38	COLM QUINN	
YLU	BALLYLUCK MERLYN	94%	NCBC	VEO	MBH	€116	€69	€27	92	8.0	9.8	0.09	0.13	-1.6	0.7	1.4	€91	€75	€7	€138	€63	€60	TIMOTHY FEEN	
IE131731711356	n/a	56%	NCBC	BGZ	SPW	€161	€61	€82	172	10.3	9.3	0.08	0.07	-4.3	2.7	2.2	€171	€60	€98	€146	€63	€67	SEAN BUGLER	
IE131731741367	n/a	94%	NCBC	KES	HFL	€146	€87	€46	201	17.5	12.0	0.18	0.10	-3.1	0.8	2.2	€137	€111	€28	€152	€63	€63	SEAN BUGLER	
IE131731741400	n/a	84%	NCBC	RMW	SPW	€152	€70	€72	172	11.9	10.2	0.10	0.09	-4.5	1.7	1.6	€154	€72	€70	€157	€68	€75	SEAN BUGLER	
IE131751670635	n/a	69%	NCBC	HFL	LWK	€152	€70	€62	124	12.5	9.5	0.15	0.11	-3.8	1.5	1.6	€167	€65	€70	€136	€76	€54	GERARD WHELAN	
IE141163820765	BALLYDEHOB ROY 765	100%	ABS	RUU	OJI	€161	€82	€45	274	15.0	12.8	0.09	0.07	-2.8	1.1	1.6	€160	€43	€73	€159	€122	€17	ROBT SHANNON & HELEN	
IE141171390829	CORROVOLLEY CUPID ARENDO	91%	NCBC	SAO	RUU	€142	€82	€44	249	16.0	12.3	0.12	0.08	-2.5	1.3	3.3	€116	€78	€33	€170	€87	€56	JOHN RICHARD SWEETNAM	
IE141221321030	DONEEN MARLEEN MASCO	100%	NCBC	MCL	GMI	€118	€84	€20	287	14.4	13.3	0.07	0.08	-0.5	1.3	3.4	€133	€85	€25	€99	€83	€16	GERARD MURPHY	
IE141394220630	n/a	72%	NCBC	KNW	BWH	€146	€78	€65	141	17.2	10.1	0.22	0.11	-3.6	2.0	2.3	€171	€86	€92	€130	€71	€39	PATRICK GRIFFIN	
IE141556211277	n/a	72%	NCBC	KES	UYC	€134	€98	€39	193	16.3	13.8	0.17	0.14	-2.8	0.5	1.6	€137	€111	€28	€138	€85	€50	SHANE CHAMBERS	
IE141608170292	MILLANDS PRINCE	72%	NCBC	BWZ	GMI	€139	€63	€58	108	11.0	8.5	0.14	0.10	-2.9	2.1	1.5	€144	€71	€51	€134	€55	€64	PATRICK COAKLEY	
IE141617950879	BALLINDEASIG HARRY 879	94%	NCBC	LLO	AHD	€131	€49	€70	134	4.3	8.0	-0.02	0.07	-3.6	2.4	2.8	€122	€53	€68	€126	€44	€72	EDWARD JAGOE	
IE141617980898	BALLINDEASIG BELLA	81%	NCBC	VEO	GMI	€113	€75	€18	130	11.5	10.5	0.13	0.12	-0.7	0.9	2.6	€91	€75	€7	€131	€76	€44	EDWARD JAGOE	
IE141643180761	GLENNY HAYMOUNT	91%	NCBC	MBH	LLO	€124	€66	€55	140	10.5	9.5	0.10	0.10	-3.3	1.4	4.6	€101	€32	€58	€154	€100	€51	DANIEL M O'LEARY	
IE141644241563	n/a	63%	NCBC	SVB	SPW	€127	€53	€59	108	7.5	7.8	0.08	0.09	-2.8	2.3	1.6	€102	€50	€43	€155	€57	€76	NOEL BOWEN	
IE141650511003	n/a	94%	NCBC	JYX	LBO	€126	€57	€61	186	11.8	8.5	0.09	0.05	-2.1	3.1	3.9	€100	€54	€52	€143	€59	€69	DONAL MCSWEENEY	
IE141650531005	n/a	88%	NCBC	JYX	NWL	€126	€60	€60	149	12.3	8.5	0.13	0.07	-2.0	3.3	3.9	€100	€54	€52	€151	€67	€69	DONAL MCSWEENEY	
IE141654292367	n/a	88%	NCBC	MUV	RUU	€137	€67	€57	195	15.5	9.4	0.16	0.06	-2.8	2.1	2.1	€123	€77	€49	€146	€56	€64	JOHN R KINGSTON	
IE141759181531	n/a	100%	NCBC	AAP	RUU	€139	€66	€56	220	11.5	10.3	0.06	0.06	-3.7	1.0	2.6	€127	€60	€60	€150	€71	€52	MATTHEW O'CONNOR	
IE141766750711	n/a	75%	NCBC	LLO	UYC	€117	€63	€52	138	9.5	9.3	0.07	0.09	-2.8	1.7	2.1	€122	€53	€68	€113	€74	€36	ANDREW DINEEN	
IE141790590881	CARRAIGBUI KELSTEIN	100%	NCBC	KES	RUU	€154	€90	€44	215	14.5	13.3	0.12	0.11	-3.2	0.5	2.4	€137	€111	€28	€160	€70	€59	DONAL J LUCEY	
IE141806590662	n/a	72%	NCBC	DEU	MBH	€149	€85	€53	86	17.3	10.3	0.28	0.15	-3.4	1.1	4.0	€148	€87	€64	€146	€83	€41	TIMOTHY O'SHEA	
IE141893060975	n/a	91%	NCBC	LOO	HRZ	€135	€80	€27	233	16.0	11.8	0.13	0.08	-1.2	1.2	2.7	€128	€101	€13	€125	€60	€41	MARGARET BURKE	
IE141902530720	n/a	91%	NCBC	SAO	MBH	€130	€75	€39	132	11.5	10.5	0.13	0.12	-2.2	1.2	1.8	€116	€78	€33	€137	€72	€44	JOHN COTTER	
IE151000291299	n/a	63%	NCBC	OJI	BCG	€204	€73	€89	169	12.3	10.5	0.12	0.10	-4.4	3.3	1.3	€242	€114	€77	€164	€31	€101	KEVIN MCSWEENEY	
IE151011242315	LISDUFF MASTERPIECE ET 1	97%	NCBC	OJI	ELC	€171	€99	€45	385	18.0	16.0	0.06	0.06	-1.3	2.6	1.2	€242	€114	€77	€106	€83	€14	JOHN J O'SULLIVAN	
IE151047810610	MILEWATER PRINCE	66%	NCBC	LPP	BCG	€123	€56	€67	53	9.5	7.0	0.15	0.11	-3.9	1.8	8.2	€101	€35	€60	€167	€76	€73	KEVIN KELLEHER	
IE151166920765	n/a	100%	NCBC	OJI	MYO	€171	€85	€55	303	14.8	13.5	0.06	0.06	-1.9	2.9	1.7	€242	€114	€77	€101	€55	€33	DENIS O'CONNELL	
IE151169430699	FOLLACHFIA SARENDO 699	91%	NCBC	SAO	MAU	€125	€81	€35	150	13.3	11.3	0.15	0.12	-2.0	1.0	2.1	€116	€78	€33	€131	€84	€37	BENNY JOE O'CONNOR	
IE151216060788	n/a	94%	NCBC	KES	MBH	€120	€81	€40	184	14.0	11.5	0.13	0.10	-3.0	0.4	2.4	€137	€111	€28	€108	€50	€51	DONAGH BUCKLEY	
IE151549180503	n/a	94%	NCBC	OJI	RUU	€209	€89	€73	271	15.8	13.5	0.10	0.09	-3.3	3.0	1.8	€242	€114	€77	€160	€63	€70	KEVIN HEGARTY	
IE151549224381	n/a	75%	NCBC	WPE	UYC	€153	€81	€66	188	13.6	11.7	0.13	0.11	-3.8	1.9	1.9	€164	€92	€68	€136	€70	€64	TEAGASC	

**Table 1. List of potential Holstein Friesian Bulls for GEN€ IRELAND Spring 2009 program. Cont.**

**The following list of bulls is a draft. Once genomic data has been added these bulls will be reassessed. The target average EBI is €150**

ANIMAL NUMBER	ANIMAL NAME	HOL	AI	SIRE	MGS	Milk			M kg	F kg	P kg	F%	P%	CI	SU%	CD%	Sire	Sire	Sire	Dam	Dam	Dam	BREEDER
						EBI	SI	Fert SI									EBI	Milk	Fert	EBI	Milk	Fert	
IE151549234382	n/a	88%	NCBC	AAP	JVH	€159	€65	€65	226	5.0	11.5	-0.07	0.08	-3.8	1.8	1.7	€127	€60	€60	€171	€71	€70	TEAGASC
IE151549283884	MOOREPARK JINX 884	81%	NCBC	RMW	UYC	€138	€55	€77	59	10.2	7.0	0.16	0.11	-5.1	1.4	1.2	€154	€72	€70	€119	€39	€84	TEAGASC
IE151619250434	BRIDEPARK OMAN	97%	Eurogene	OJI	AAP	€194	€107	€58	430	15.5	18.3	-0.02	0.07	-2.3	2.7	1.7	€242	€114	€77	€147	€100	€38	PATRICK AHERN
IE151623441712	n/a	75%	NCBC	HFL	BWZ	€160	€71	€66	133	18.0	8.8	0.24	0.09	-3.6	2.0	1.2	€167	€65	€70	€152	€78	€61	PATRICK O'LEARY
IE151623461680	n/a	72%	NCBC	WPE	UYC	€162	€74	€77	113	13.6	9.7	0.19	0.13	-4.3	2.3	3.2	€164	€92	€68	€154	€55	€85	PATRICK O'LEARY
IE151623481699	n/a	63%	NCBC	WPE	UYC	€169	€84	€80	129	14.6	11.2	0.20	0.14	-4.6	2.3	3.1	€164	€92	€68	€171	€76	€92	PATRICK O'LEARY
IE151700850411	n/a	94%	NCBC	RDU	SWR	€144	€57	€63	212	12.3	8.8	0.09	0.04	-4.6	0.7	1.4	€161	€72	€54	€132	€42	€72	ANTHONY FLAVIN
IE151786410442	n/a	97%	NCBC	RDU	SWR	€152	€70	€54	288	14.5	11.3	0.07	0.03	-3.7	0.9	2.4	€161	€72	€54	€143	€69	€55	PATRICK GERARD O'CONNOR
IE151803970636	n/a	88%	NCBC	RMW	ESZ	€144	€67	€62	185	10.4	10.2	0.06	0.08	-3.7	1.7	1.6	€154	€72	€70	€125	€62	€54	MICHAEL MC GRATH
IE151868551134	MURPHYS BONANZA	16%	NCBC	BCG	UYC	€144	€54	€64	12	13.5	5.5	0.25	0.10	-3.7	1.8	1.7	€129	€13	€98	€160	€120	€30	JAMES MURPHY
IE161179780649	n/a	88%	NCBC	HFL	BWZ	€155	€70	€63	125	16.3	8.8	0.22	0.09	-3.4	2.0	1.8	€167	€65	€70	€144	€75	€55	IVAN FERGUSON
IE191062161272	n/a	94%	NCBC	LLO	NHS	€117	€62	€57	94	5.5	9.3	0.03	0.12	-2.5	2.4	4.2	€122	€53	€68	€118	€72	€46	DES O'CONNOR
IE191062191267	GLENSILLAGH OMAN	94%	NCBC	OJI	AAP	€186	€106	€57	425	18.3	17.5	0.03	0.06	-2.1	2.9	1.3	€242	€114	€77	€127	€97	€37	DES O'CONNOR
IE191390540966	n/a	63%	NCBC	WLI	UYC	€139	€85	€48	134	14.0	11.5	0.18	0.13	-2.7	1.5	1.9	€136	€65	€72	€140	€105	€25	THOMAS CAHILL
IE241045440877	n/a	91%	NCBC	KYC	CWJ	€126	€56	€52	173	16.0	7.5	0.18	0.04	-2.2	2.3	1.5	€110	€42	€36	€139	€71	€68	JOHN RAFFERTY
IE241116290890	n/a	88%	NCBC	WPE	HZU	€141	€79	€58	181	13.1	11.5	0.12	0.11	-3.5	1.4	3.7	€164	€92	€68	€121	€66	€47	SEAMUS CRAWFORD
IE241339871210	n/a	78%	NCBC	SVB	QGX	€127	€65	€50	92	11.3	8.5	0.16	0.12	-2.9	1.4	2.0	€102	€50	€43	€150	€79	€57	THOS & KIERAN LILLIS
IE241364161172	n/a	81%	NCBC	KES	SPW	€146	€105	€27	262	13.0	16.3	0.05	0.14	-1.6	0.7	2.0	€137	€111	€28	€146	€99	€25	PATRICK COLEMAN
IE251389780554	n/a	53%	NCBC	DEU	CPA	€146	€64	€70	-28	13.5	6.5	0.29	0.15	-4.5	1.4	3.4	€148	€87	€64	€139	€42	€76	GREGORY DORIS
IE272004730749	LYNBROOK FORTUNE	100%	NCBC	S448	OJI	€115	€95	€6	417	13.6	16.7	-0.05	0.05	0.7	1.2	2.5	€108	€80	€28	€119	€110	€18	JOHN CUNNANE
IE272004760751	LYNBROOK ROBBIN ET	100%	NCBC	S448	OJI	€122	€81	€27	395	10.9	14.9	-0.08	0.03	-0.8	1.6	4.2	€108	€80	€28	€137	€83	€26	JOHN CUNNANE
IE281215061501	n/a	72%	NCBC	DEU	ELC	€142	€71	€63	51	13.5	8.5	0.24	0.14	-3.9	1.4	3.7	€148	€87	€64	€129	€56	€63	KEVIN MEADE
IE281381570845	FOWLERSTOWN STAN	91%	NCBC	OJI	RUU	€206	€93	€71	327	14.8	15.0	0.04	0.08	-3.2	2.9	1.2	€242	€114	€77	€169	€72	€65	ROBERT J MOORE
IE281381580846	FOWLERSTOWN VAL	97%	NCBC	LLO	LBO	€133	€61	€68	110	8.3	8.8	0.07	0.10	-3.5	2.3	2.4	€122	€53	€68	€142	€69	€67	ROBERT J MOORE
IE301458621237	n/a	72%	NCBC	HFL	UYC	€151	€76	€57	173	15.5	10.5	0.16	0.09	-3.3	1.6	1.7	€167	€65	€70	€133	€88	€44	DAVID HEALY
IE331015840794	DERRINSALLOW CAIT 794 ADAM	59%	NCBC	LOO	BFU	€148	€82	€49	135	21.3	9.8	0.30	0.10	-2.2	2.0	2.0	€128	€101	€13	€167	€63	€85	JAMES MURRAY
IE331015850812	DERRINSALLOW AGNES 812 ARTHL	78%	NCBC	LOO	BAV	€128	€77	€46	58	18.3	8.5	0.31	0.13	-2.3	1.7	3.0	€128	€101	€13	€132	€52	€80	JAMES MURRAY
IE331015850837	n/a	38%	NCBC	RIP	HFL	€124	€38	€70	30	11.8	3.8	0.21	0.06	-3.9	2.1	1.9	€109	€43	€60	€138	€33	€80	JAMES MURRAY
IE331068230467	BELLPARK DECLAN	50%	NCBC	HFL	ODR	€151	€48	€78	-19	12.3	4.5	0.26	0.11	-4.7	2.0	1.2	€167	€65	€70	€134	€32	€85	FERGUS AUSTIN
IE331125860554	BIGPARK RUELSA	91%	NCBC	RDU	ERO	€147	€65	€53	209	13.3	9.8	0.11	0.06	-3.6	0.9	2.4	€161	€72	€54	€128	€59	€51	SEAN MCCUTCHEON
IE331504620219	KEVINSFORT OJI HAZE	94%	NCBC	OJI	SRH	€196	€76	€88	399	12.0	14.0	-0.07	0.01	-3.9	3.6	1.4	€242	€114	€77	€149	€38	€98	MICHAEL KINANE
IE341067671977	n/a	81%	NCBC	KES	AAP	€141	€89	€52	214	11.8	13.5	0.06	0.12	-3.9	0.5	2.4	€137	€111	€28	€153	€66	€75	MICHAEL BRITTON
IE341129460879	n/a	88%	NCBC	STX	QGI	€115	€66	€37	40	9.8	8.3	0.18	0.14	-1.8	1.5	3.0	€101	€74	€3	€135	€58	€72	JOHN HALLY
IE341462420466	n/a	53%	NCBC	DEU	HFL	€136	€69	€60	16	17.5	7.0	0.34	0.13	-3.9	1.1	4.1	€148	€87	€64	€126	€51	€56	JOHN DEVANE
IE351066190614	CURRA MCL LAR	88%	NCBC	MCL	SPW	€151	€101	€28	250	17.1	14.8	0.15	0.13	-0.9	1.6	2.1	€133	€85	€25	€168	€117	€32	KIERAN HEARNE
IE351312631113	n/a	75%	NCBC	LLO	UYC	€132	€73	€52	164	8.0	11.3	0.03	0.11	-2.8	1.7	1.6	€122	€53	€68	€134	€93	€36	MICHAEL HUNT
IE371161850442	n/a	97%	NCBC	KES	NHS	€146	€92	€40	217	13.3	13.8	0.10	0.12	-2.8	0.6	2.6	€137	€111	€28	€138	€73	€52	MATTHEW FARRELL
IE371222510887	n/a	94%	NCBC	RDU	ZRR	€130	€80	€23	326	15.3	13.0	0.06	0.04	-1.4	0.5	2.6	€161	€72	€54	€94	€88	€8	JAMES BYRNE
IE371345470819	n/a	91%	NCBC	RIL	MBH	€120	€57	€46	260	8.4	10.1	-0.04	0.03	-1.7	2.3	3.5	€134	€58	€50	€118	€56	€41	JOHN DONOHOE
<b>Overall</b>						<b>€143</b>	<b>€72</b>	<b>€55</b>	<b>175</b>	<b>12.8</b>	<b>10.4</b>	<b>0.12</b>	<b>0.09</b>	<b>-3.3</b>	<b>2.0</b>	<b>2.2</b>	<b>€143</b>	<b>€63</b>	<b>€68</b>	<b>€139</b>	<b>€70</b>	<b>€55</b>	

**Table 2. List of Non-HOFR potential Bulls for GENE IRELAND Spring 2009 program.**

ANIMAL NUMBER	ANIMAL NAME	BRD	AI	SIRE	MGS	Milk			M kg	F kg	P kg	F%	P%	CI	SU%	CD %	Sire	Sire	Sire	Dam	Dam	Dam	BREEDER
						EBI	SI	Fert SI									EBI	Milk	Fert	EBI	Milk	Fert	
<b>JERSEY AND CROSSBRED</b>																							
IE141857580721	BRIDEVALLEY ROYAL PINE	JE	NCBC	PVS	WIV	€83	€33	€71	-411	3.4	-1.3	0.44	0.28	-4.3	1.8	1.0	€66	€15	€46	€106	€50	€97	JERRY MURPHY
IE151316330566	KINTEERA SAM	JE	NCBC	PVS	Lemvig	€92	€21	€76	-576	5.4	-5.5	0.72	0.34	-4.6	1.8	1.1	€66	€15	€46	€113	€26	€106	INA-PATRICIA O'CALLAGHAN
IE151316370529	KINTEERA GER	JE	NCBC	SEA	Jas Tal	€106	€27	€118	-610	10.5	-6.0	0.86	0.38	-6.4	3.7	0.9	€87	€15	€138	€126	€68	€97	INA-PATRICIA O'CALLAGHAN
IE151828721397	n/a	JE	NCBC	MRY	JSZ	€87	€46	€71	-447	11.5	-1.3	0.66	0.32	-3.4	2.7	0.8	€142	€114	€55	€22	€22	€85	TEAGASC
IE151828741408	n/a	JE	NCBC	WLT	S035	€106	€36	€100	-593	12.3	-4.8	0.89	0.38	-5.4	3.1	0.8	€139	€76	€79	€74	€4	€121	TEAGASC
IE151828761335	n/a	JE	NCBC	RKV	ALD	€105	€36	€92	-474	12.5	-3.3	0.72	0.30	-4.4	3.5	0.8	€109	€50	€93	€96	€22	€91	TEAGASC
IE151828791354	n/a	JE	NCBC	WLT	PWC	€144	€67	€93	-386	15.8	1.8	0.69	0.34	-4.7	3.3	0.8	€139	€76	€79	€152	€57	€107	TEAGASC
YHY	BALLYHOOLY BLAKE DR ROB	JE	NCBC	LIF	PWC	€93	€54	€79	-338	10.8	1.5	0.53	0.29	-4.1	2.6	0.8	€40	€51	€51	€152	€57	€107	TEAGASC
IE351168412826	n/a	XBRED	NCBC	KNW	WAS	€157	€86	€81	-32	20.2	8.3	0.43	0.20	-4.6	2.3	1.6	€171	€86	€92	€150	€85	€70	PAULINE RYAN
<b>RED BREEDS</b>																							
DUJ	DOVEA JODUS	RB	Dovea	MZZ	DOU	€90	€11	€61	-116	2.1	-0.3	0.15	0.08	-3.2	2.0	2.1	€118	€10	€88	€55	€13	€34	GERMANY
IE151666630545	n/a	NR	NCBC	LEV	IEN	€113	€36	€56	48	5.4	4.8	0.08	0.08	-2.9	1.9	1.4	€95	€7	€62	€130	€65	€50	PATRICK HIGGINS
IE151666680533	n/a	NR	NCBC	BXG	S305	€96	€40	€47	65	4.1	5.9	0.04	0.08	-2.5	1.5	1.8	€59	€25	€32	€134	€55	€62	PATRICK HIGGINS
<b>PURE FRIESIAN</b>																							
ACA	LARUS	FR	Dovea	Lambris	Nero																	GERMANY	
CDQ	CASTLEDALE ODYSSEY	FR	Dovea	S354	BCG												€143	€20	€129				GREAT BRITIAN
CGB	CARRICKSHOCK GLEN ALBYN	FR	Dovea	BCG	SEX	€116	€5	€79	-99	5.5	-1.5	0.19	0.04	-4.8	1.9	2.0	€129	€13	€98	€93	€24	€60	MARTIN & PAT CLEARY
DZR	DOVEA NERO	FR	Dovea	Nero	Lad																	GERMANY	
IE331017660778*	n/a	FR	NCBC	RIP	ODR	€114	€59	€50	97	12.8	7.5	0.18	0.08	-2.8	1.5	2.1	€109	€43	€60	€125	€75	€40	PAUL RYAN
<b>Overall</b>						€107	€40	€77	-276	9.4	0.4	0.47	0.23	-4.7	2.8	0.9	€107	€52	€75	€109	€41	€81	

**NOTES:**

**PURE FRIESIAN PACK**

1. Currently only 4 pure friesians have been put forward. To obtain the minimum requirement of 5 bulls per pack the additional bull (\*) at this point in time is 25% HO
2. The foreign pure friesian bulls require more information before estimated EBI figures can be calculated.
3. Last year we had enough herds and bulls to test 2 FR packs but at this point in time only 1 pack of 35 straws will be available this year.
4. Herdowners interested in this pack should ensure they get their order in early to avoid disappointment

**CROSSBRED PACK**

1. With a greater number of Jersey test bulls coming through we should be in a position to test 2 XBRED packs
2. A 35 straw XBRED pack will consist of 3 Jerseys (or Xbred), with the remainder being HOFR
3. Again we anticipate the demand for these packs to be high so place your order early to avoid disappointment