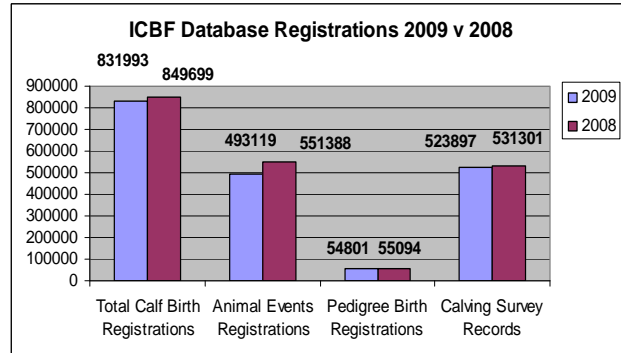
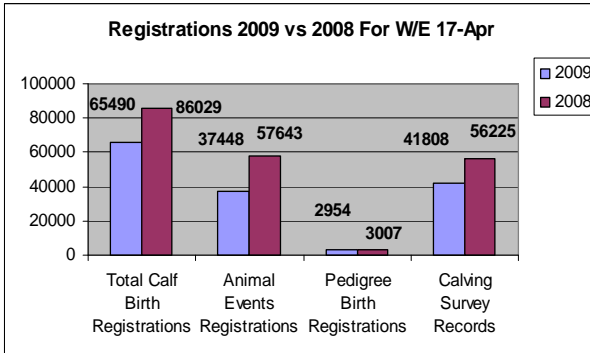


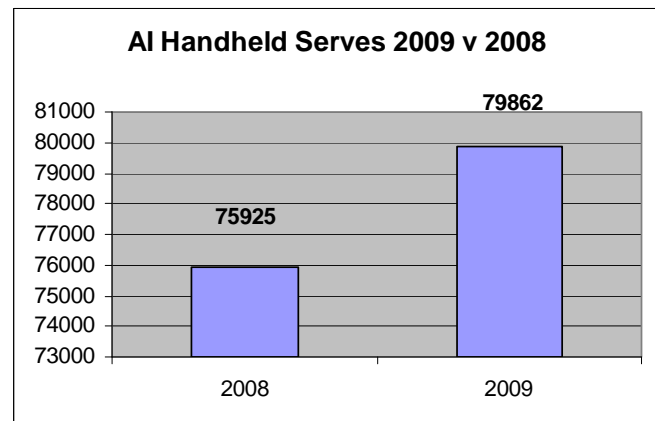
## 1. Important Dates

- ✚ **Thursday 30<sup>th</sup> April 2009.** ICBF Board Meeting (AM), AGM (PM) Maldron Hotel, Portlaoise, 10:30-16:00.
- ✚ **Thursday 7<sup>th</sup> May 2009.** Sheep Board Meeting (AM).

## 2. Database



- ✚ With some clarity now provided on the 2009 Suckler Scheme, we will be updating some of the pre and post weaning forms for the 2009 born calves and they will be released in the coming weeks. In relation to 2008 born calves, the number of calves with a meal feeding introduction has increased to 770,000, with just over 676,000 of these having been weaned.
- ✚ The revamp of the Milk Recording system continues. Parallel runs on both Munster and PG Milk Recording herds will continue next week.
- ✚ Work has begun on updates to the Fertility reports for the coming AI season.
- ✚ Work on a new mechanism of sending and receiving Suckler scheme data to DAFF is beginning and will take a number of weeks to complete.
- ✚ Development on the sheep application continues, with on-going updates being released.
- ✚ The graph shows Inseminations recoded on AI Handhelds in 2009 compared with 2008.



## 3. HerdPlus

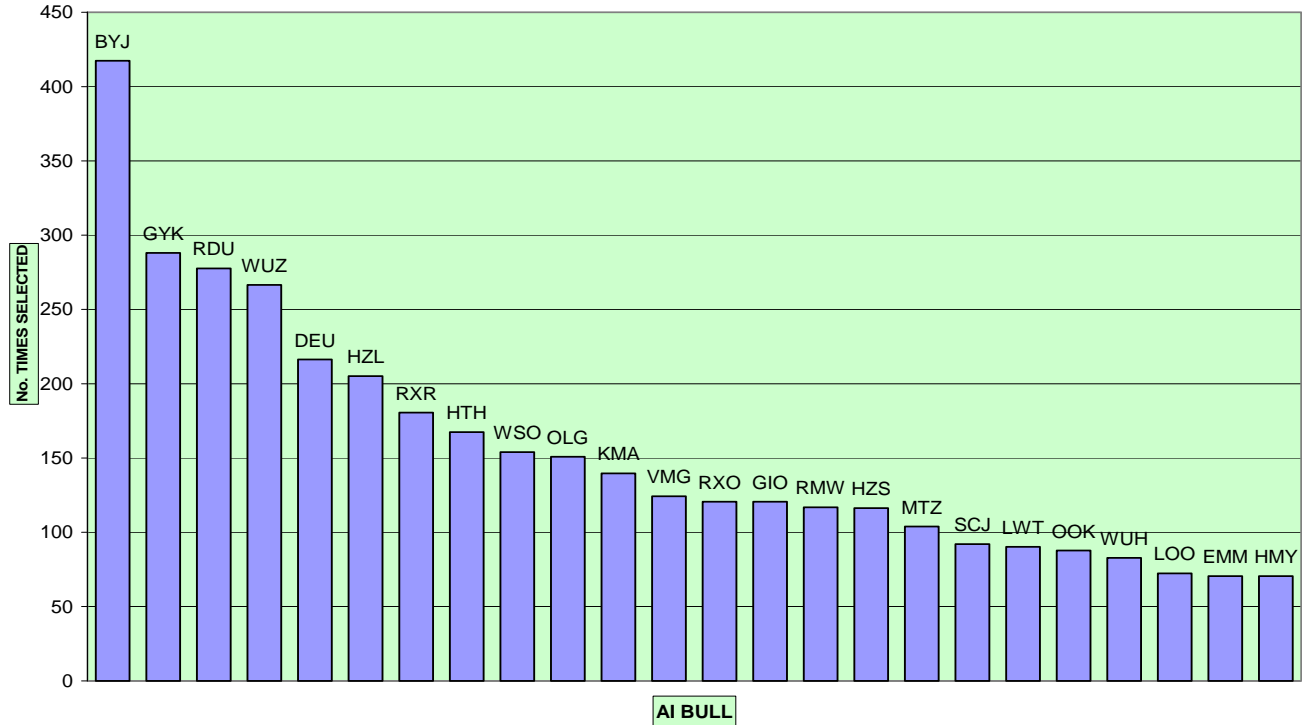
### Sire Advice Analysis



- ✚ Some 1,832 farmers ran Sire Advice program up to 16th April. See graph below which gives a breakdown of the most frequently selected bulls for cows. (Top 25 bulls). Farmer's bull selections were reflected on their Breeding Charts which were posted last week. The bulls also get automatically saved to the AI Handhelds operated by AI technicians.

**SIRE ADVICE for COWS - TOP 25 FARMER SELECTED AI BULLS ON COWS (16/04/09)**

Based on some 1,832 farmers who ran Sire Advice



#### 4. Lambplus®



- ✚ Changes were made to the 40-Day Weight Recording Screen to ensure that lambs born before 1<sup>st</sup> January 2009 are included on the screen.
- ✚ Another day of training for the Donegal FRS Scanning team is planned to take place in Ballyhaise Ag College next Monday the 20<sup>th</sup> May.
  - The Handheld unit that will be used to retrieve the data was tested. Improvements to this device are currently being progressed.
- ✚ Another round of phone calls will be made shortly to ensure that all lambs have been entered onto the system in advance of the scanning visit.
  - Without the lambs having been entered onto the system, the Handheld unit will not have any lambs and so the visit will not be able to take place.
- ✚ Meetings are currently ongoing with the Flock Books to go through the Lambplus program and explore ways of linking up with the Flock Books.
- ✚ Excellent Feedback has also been received at these meetings in terms of improvements that need to be made to the current Lambplus software.

## 5. GENE IRELAND®

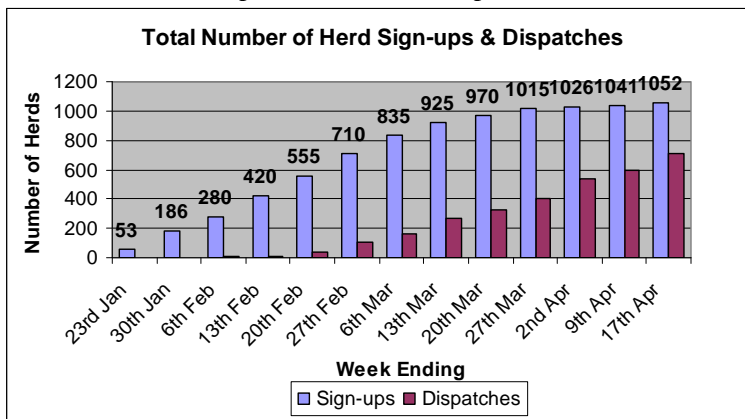
### Dairy

Effective of today sign-ups are now finished, with the exception of the XBRED pack.

1052 herds taking 47,734 doses.

Currently dispatching herds that are due to start next week (the 2 packs we are dispatching at the moment are shown in graph below). With the availability of semen from several new test bulls we aim to get a bulk of the remaining herds packed over the next 7-10 days.

New GENE IRELAND web screens are now in place for herd owners partaking in the programme (accessed via their HerdPlus log-ins). It provides further detail on straws requested, bulls dispatched (including genetic evaluations), insemination records, calvings, and milk recording information on test daughters. A few final touch-ups are still to be done.



### Note the genetic evaluation of some of the following bulls include Genomic data.

We currently do not have Genomic data available for bulls marked with an \*.

AI Code	Animal Name	HO %	Sire	Overall Index	Milk Prod SI	Fertility SI	Calving SI	Carcass SI	Health SI	Milk KG
GYM	(IG) GLENSILLAGH TIMMY	94	LLO	129	73.4	58.4	6.1	-5.6	-2.9	107
GYR*	(IG) GLENROSE HARRY	47	DEU	141	65.3	67.9	18.6	-11	0.6	-14
HRJ*	HILLSDALE RUDE JUSTICE	94	OJI	219	93.3	78.4	44.1	-1.5	5.2	292
LWU	(IG) LEETOWN LUTHAR	91	LOO	139	85.8	25.5	33.3	-8.7	2.9	306
YOA*	BALLYDEHOB ROY 765	100	RUU	154	75.7	44.3	37.1	-3.8	0.6	261
AVERAGE:				€157	€79	€55	€28	€6.1	€1.3	190

AI Code	Animal Name	HO %	Sire	Overall Index	Milk Prod SI	Fertility SI	Calving SI	Carcass SI	Health SI	Milk KG
BQB	(IG) BALLYBRIDE ARISTOTLE	63	WPE	170	87.0	84.6	15.1	-14.9	-1.1	164
CCQ	(IG) CARRACOUGH LIMPIT	100	OJI	160	102.0	25.2	40.2	-6.2	-1.1	357
FLT*	FOWLERSTOWN STAN	91	OJI	221	93.4	83.2	42.7	-1.3	2.9	321
KUN	(IG) KNOCKSOUNA VELVET	94	MAU	130	74.4	44.6	16.8	-1.2	-4.6	124
MWP*	MILEWATER PRINCE	66	LPP	123	51.5	67.4	7.8	-9.8	6.3	39
AVERAGE:				€161	€82	€61	€25	€6.7	€0.5	201

## Beef

- Sign ups have reached 368 herds taking an average of 17 straws each. 135 herds ahead of the same week last year.
- Total straws sent out per bull currently on the panel are in the table below.

BREED	CH	CH	LM	SI	SI	BB	PT	BA	AA	AA	AA	SH
CODE	RHI	CWB	RHF	RWV	SKU	RSA	KCP	WOA	RWB	FPG	LZE	CZB
STRAWS	508	12	280	137	512	665	257	441	297	139	235	150

## 6. Genetic Evaluations

### Dairy

- A list of proofs were sent to the industry during the week. An issue with missing gestation, mortality and maternal calving was identified with a couple of foreign bulls with no progeny in Ireland. These have been corrected and the bull search will be updated later this evening.

### Genomic Update

- Genotyping of the latest batch of samples is currently ongoing. The results are expected next week and the genomic selection software will then be run to get genomic figures for these bulls. At this point all Genomically Selected bulls will have their proofs updated and a new Active Bull list will be generated. This is expected to be the week commencing 27<sup>th</sup> April.

## 7. Tully

- Bull inspections are mainly finished although a small number are to be inspected over the weekend with bull owners that have bulls that passed inspection receiving the on farm health testing requirements this week.
- We have received applications for 171 bulls with 96 passing inspection, 61 failing and 9 still to be inspected.
- A Tully tested bull from the current intake made the second top price at €5100 at the Simmental premier last Saturday week.
- A small number of bulls remain in Tully made up of bulls destined for A.I but pending there blood test results and cleaning out and power washing of sheds has been started this week in initial preparation for the May intake.

## 8. Milk Recording

National Milk Recording Results by County - 10 day Period 07/04/09 to 17/04/09

	No. Herds Recorded	No. Cows Recorded	Average Herd Size	Average 24hr Milk kg/Cow	Average Fat %	Average Protein %	Average F + P kg	Average SCC
CARLOW	13	913	70	28.6	4.04	3.42	2.13	288
CAVAN	36	1,605	45	28.1	3.81	3.34	2.01	357
CLARE	22	877	40	26.6	3.65	3.33	1.86	217
CORK STH	238	13,909	58	26.2	3.83	3.40	1.89	293
CORK NTH	198	12,418	63	26.0	3.87	3.38	1.89	259
DONEGAL	1	33	33	27.8	3.89	2.99	1.91	94
DUBLIN	2	80	40	34.9	3.12	3.35	2.26	291
GALWAY	33	1,681	51	26.7	3.89	3.40	1.95	319
KERRY	112	5,648	50	27.7	3.68	3.28	1.93	295

KILDARE	16	972	61	28.9	3.87	3.37	2.09	241
KILKENNY	44	3,251	74	24.9	3.89	3.44	1.83	257
LAOIS	33	2,003	61	25.5	3.76	3.43	1.83	318
LEITRIM	2	102	51	33.2	3.72	3.12	2.27	127
LIMERICK	101	6,591	65	27.6	3.64	3.36	1.93	302
LONGFORD	5	178	36	23.9	3.89	3.56	1.78	274
LOUTH	19	1,427	75	26.5	3.76	3.41	1.90	286
MAYO	17	561	33	28.5	3.58	3.41	1.99	333
MEATH	41	3,769	92	24.5	3.98	3.33	1.79	361
MONAGHAN	28	1,287	46	25.7	3.92	3.35	1.87	325
OFFALY	15	900	60	25.5	3.99	3.39	1.88	319
ROSCOMMON	1	39	39	28.6	4.07	3.26	2.10	343
SLIGO	6	208	35	25.1	2.94	3.16	1.53	240
TIPPERARY NTH	31	1,800	58	23.8	3.82	3.41	1.72	241
TIPPERARY STH	74	4,785	65	25.9	3.88	3.37	1.88	255
WATERFORD	46	3,825	83	26.0	3.93	3.44	1.92	284
WESTMEATH	18	1,311	73	25.1	4.18	3.41	1.91	244
WEXFORD	40	2,528	63	28.1	3.85	3.42	2.04	294
WICKLOW E	6	370	62	24.8	3.10	3.41	1.61	396
WICKLOW W	11	813	74	24.9	4.18	3.36	1.88	340
	<i>No. Herds Recorded</i>	<i>No. Cows Recorded</i>	<i>Average Herd Size</i>	<i>Average 24hr Milk kg/Cow</i>	<i>Average Fat %</i>	<i>Average Protein %</i>	<i>Average F + P kg</i>	<i>Average SCC</i>
National	1,209	73,884	57	26.9	3.78	3.36	1.92	283

National Milk Recording Averages by Province - 10 day Period 07/04/09 to 17/04/09

Provincial	No. Herds Recorded	No. Cows Recorded	Average Herd Size	Average 24hr Milk kg/Cow	Average Fat %	Average Protein %	Average F + P kg	Average SCC
Munster	822	49,853	61	26.2	3.90	3.37	1.91	268
Leinster	263	18,515	70	26.6	3.69	3.41	1.89	301
Connacht	59	2,591	44	28.4	3.67	3.27	1.97	272
Ulster	65	2,925	45	27.2	3.86	3.23	1.93	259

Recorded Cows by Milk Recording Organisation - Year on Year Comparison

Milk Recording Organisation	YTD 2008 Cows Recorded 01/01/08 - 17/04/08	YTD 2009 Cows Recorded 01/01/09 - 17/04/09	2009 vs 2008 Year on Year Difference (%)
Progressive	109,659	107,416	-2.1%
Dairygold	64,475	66,652	3.3%
Kerry	42,536	39,730	-7.1%
SWS	41,405	41,884	1.1%
Tipperary	5,796	5,303	-9.3%
Arrabawn	5,178	5,018	-3.2%
Connacht	5,338	4,206	-26.9%
Donegal	349	215	-62.3%
<b>Total</b>	<b>274,736</b>	<b>270,424</b>	<b>-1.6%</b>

**National Milk Recording Statistics - Herds, Cows & EDIY 17/04/09**

Milk Recording Organisation	Total Herds Recorded YTD 17/04/09	No. EDIY Herds YTD 17/04/09	% Herds EDIY	Total No. Cows Recorded YTD 17/04/09	No. EDIY Cows YTD 17/04/09	% Cows EDIY
Progressive	1,567	456	29%	107,416	31,830	30%
Dairygold	1,127	333	30%	66,652	21,418	32%
Kerry	733	39	5%	39,730	1,991	5%
SWS	752	69	9%	41,884	4,358	10%
Tipperary	77	16	21%	5,303	1,498	28%
Arrabawn	79	58	73%	5,018	3,828	76%
Connacht	83	2	2%	4,206	74	2%
Donegal	3	3	100%	215	215	100%
<b>Total</b>	<b>4,421</b>	<b>976</b>	<b>22%</b>	<b>270,424</b>	<b>65,212</b>	<b>24%</b>

## 9. Change in our phone numbers

The ICBF phone numbers have changed. Our new numbers have “88” added to them after the area code (023). Please amend your files as soon as possible. The old numbers will continue to work until May of 2009.

Old Number (example)	New Number (example)
Phone: 023 20222	023 <b>88</b> 20222
Fax: 023 20229	023 <b>88</b> 20229

Brian Wickham Ph.D. Chief Executive Irish Cattle Breeding Federation Soc. Ltd, Highfield House, Shinagh, Bandon, Co. Cork, Ireland, Phone office +353 (0)23 882 0222, mobile +353 (0)86 826 9911 Fax office +353 (0)23 882 0229 E-Mail [bwickham@icbf.com](mailto:bwickham@icbf.com) ICBF Web site [www.icbf.com](http://www.icbf.com)