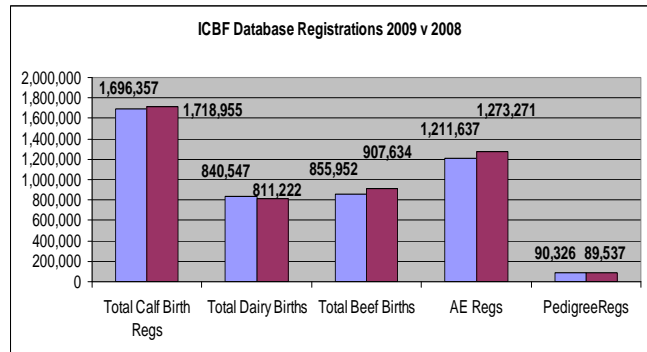
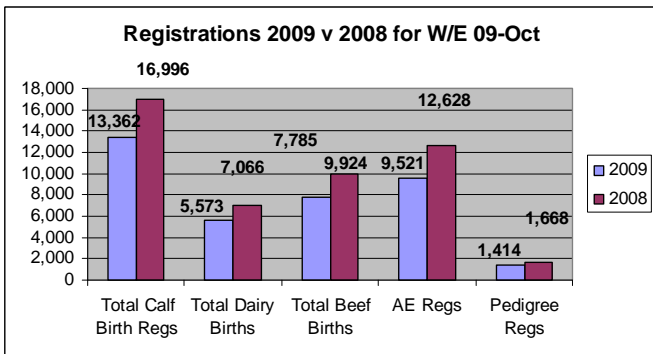


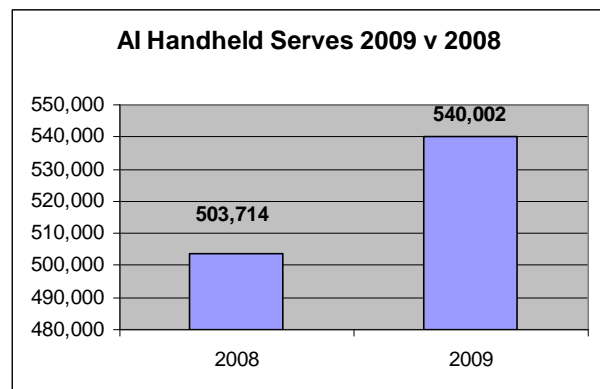
1. Important Dates

- ✚ **GÆNÆIRÆLAND® Tully Open Day** – Saturday 10th October, from 10:30 to 15:00, Tully, Co. Kildare.
- ✚ **ICBF & Sheep Ireland Board Meetings** – Thursday 22nd October, Portlaoise.
- ✚ **GÆNÆIRÆLAND® Dairy Conference** – Thursday 29th October, Corrin Mart, Rathcormac, Co. Cork.

2. Database



- ✚ All suckler scheme herds with a calving in 2009 have now received their first pre-weaning form. The number of 2009 born calves with meal introduced is 342,000, with the number of animals weaned at 62,000.
- ✚ Three of the four milk recording organisations are now fully live on the new Milk Recording system. Munster will go live during the week of October 19th.
- ✚ Work has begun on updating the Sales Catalogue template for beef animals based on feedback received during the recent industry meeting.
- ✚ Munster AI will take a new batch of technicians live on AI handhelds next week in the Clare and Galway regions. These technicians will use the 2010 version of the AI handheld software.
- ✚ The graph here shows Inseminations recoded on AI Handhelds in 2009 compared with 2008. There are more technicians using the handhelds in 2009 than there were in 2008, so even though the number of inseminations recorded is up, overall inseminations for the season will be down.



3. Tully

- ✚ A Russian and Chinese group visited Tully this week, accompanied by the Aberdeen Angus society and Bord Bia, respectively. Both groups had a keen interest in the Tully and GÆNÆIRÆLAND program. The Chinese group are looking to purchase semen from bulls that have been progeny tested, whilst the Russian group are looking to purchase elite Angus bulls with high health status.

- ✚ Applications forms for the next intake in November are coming in on an ongoing basis, with 150 bulls being put forward to date. All applications must be back in Tully by 15th October.
- ✚ Preparations are near completion for the Tully G€N€IR€LAND open day, which takes place tomorrow in Tully, and will run from 10.30 am to 3.00 pm. A copy of the Tully Open Day catalogue can be found in the Tully section of our website – www.icbf.com.
- ✚ Six bulls (Table 1) were purchased by AI stations from the current intake (pictured below). This brings a total of 9 Tully bulls purchased this year by AI companies. Significantly higher than any other year.
- ✚ All bulls will be removed prior to the open day, however, their will be a picture of each bull at the event.

Table 1. Performance of Tully tested bulls purchased by AI companies

Breed		Average daily gain (KG)	Feed Conversion efficiency (DMI/ADG)	Scanned eye muscle depth (mm)	Scanned fat depth (mm)	SBV(€)	M & F (Stars within breed)
AA ¹	Albert De Cogan, Co. Cork	2.55	6	83.6	12.6	23	1
SI ²	John Conroy, Co. Offaly	2.82	4.9	85.4	4.38	191	5
CH ²	John Regan, Co. Leitrim	2.35	4.8	84.9	3.85	126	4
CH ²	Dermot O' Driscoll, Co. Cork	2.62	4.7	95.2	6.48	168	4
AA ²	Jeremiah Henchy, Co.Limerick	3	4.8	82.1	10	18	2
AA ²	Frank Appleby, Co. Cork	2.87	4.5	77.7	7.9	108	2

¹ Dovea AI ² NCBC AI



Dovea AI, Angus, bred by Albert De Cogan, Co. Cork, sired by Yound Dale Touch Down. LOT 1.



NCBC CH 1, bred by John Regan, Co. Leitrim, sired by Domino. LOT 23.



NCBC SIM, bred by John & Rose Conroy, Co. Offaly,
sired by Raceview King. LOT 37.



NCBC CH, bred by Dermot O' Driscoll, Co. Cork,
sired by Nelson. LOT 19.



NCBC Angus, bred by Jerry Henchy, Co. Limerick,
sired by TC FREEDOM 104. LOT 3.

4. GENÉIRELAND®

Dairy

- ✚ Sign-ups for the 2009 Autumn programme commenced this week with letters being posted to last years participants and other targeted Autumn herds.
- ✚ The catalogue of the bulls put forward is available on the ICBF website (publications section).

Beef

- ✚ Sign ups are going well with 72 herds taking part so far
- ✚ The Charolais bull RHI and Simmental bull SKU are now fully tested.
- ✚ Total straws sent out per bull currently on the panel are in the table below

BREED	CH	CH	LM	LM	SI	AA	AA	BA	PT	SA	SH	HE
CODE	VHC	CWB	RHF	FL29	RWV	RWB	FPG	WOA	KCP	BHU	CZB	AGI
STRAWS	45	200	490	71	305	330	185	540	385	40	315	15

5. Trends in Sucker Beef Value average €/year.

- Latest genetic trends in Sucker Beef Value indicate an average increase across all breeds of some €/cow/year (See Figure 1), with levels of gain being higher for the continental breeds (Simmental, Charolais and Limousin) compared to traditional breeds (Angus and Hereford).

Figure 1. Genetic Trends in Sucker Beef Value for pedigree beef breeds and our commercial beef herd.

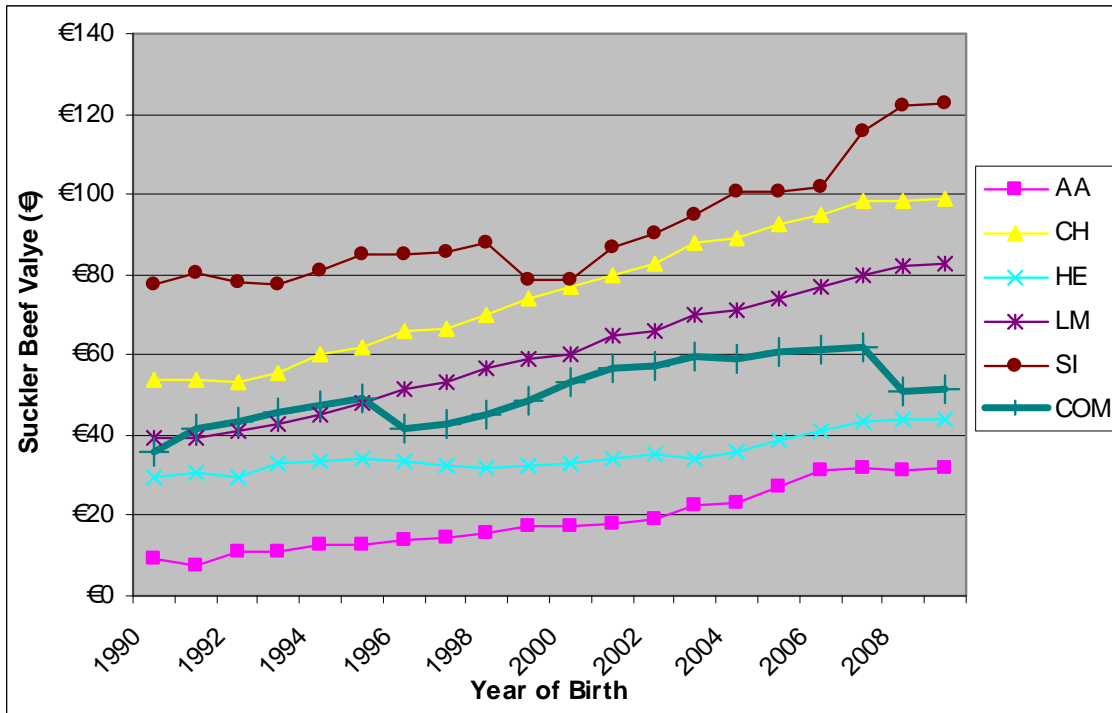


Table 1. Trends in number of records for pure-bred animals with each of the main beef breeds and for commercial animals (COM) from the Sucker Beef Herd.

Year of Birth	AA	CH	HE	LM	SI	COM
1999	3,093	8,595	3,736	4,532	3,945	13,144
2000	2,788	10,068	2,767	5,625	3,790	13,998
2001	2,951	11,181	2,610	6,308	3,268	16,296
2002	3,080	11,576	2,596	6,915	3,069	21,293
2003	3,282	10,786	2,603	7,305	2,781	29,436
2004	3,718	11,799	3,116	8,256	3,228	71,860
2005	4,282	11,879	3,290	9,056	3,562	96,017
2006	4,739	11,778	3,512	9,808	3,732	126,093
2007	3,773	11,389	3,514	10,105	3,275	139,589
2008	5,468	14,553	4,150	12,863	3,819	738,746
2009*	2,811	8,514	2,344	7,261	2,234	498,140

* Data for 2009 is up to June 2009 only.

- Levels of gain for commercial animals appear to have slipped in the past 2 years. However, this simply reflects the impact of the Sucker Cow Welfare Scheme, and the resultant five-fold increase in the number of commercial beef animals with evaluations (See Table 1). The drop in genetic level can be ascribed to

animals in earlier years being from improved herds, whereas now the evaluations are much more reflective of the actual genetic level for our National Suckler herd. Again Table 1 demonstrates the real value of the Suckler Cow Welfare Scheme. The fact that we now have almost ¾ million commercial beef calves each year with genetic evaluations puts us in a strong position to effect real genetic gain within our beef industry.

- ✚ Whilst it is reassuring to note the positive trends in Suckler Beef Value, it is important to remember that the levels of gain are still some €15/cow/year less than what was identified by Meuwissen in 2006 as the optimal beef program for Ireland. In this program, Meuwissen suggested that Ireland should be looking to progeny test 100 beef bulls per year across all of the beef breeds. This compares with the current number of bulls being tested which is less than 20 (indeed only 9 bulls have been purchased by AI station from Tully in the last 12 months). Increasing the level of genetic gain for our industry could realise an extra €100 million for beef farmers in the coming years. Capturing this extra profit potential will be a key objective of ICBF in the coming months and years. The need to develop a clear industry focused breed development program is now paramount.

6. Genetic Dairy & Beef Evaluations

- ✚ An updated genetic evaluation was done for Tully bulls. These bulls have been updated on the website and will be available in the catalogue at tomorrows Tully Open day.
- ✚ Work continues on developments of the genetic evaluations of dairy and beef cattle. This includes work on the across breed beef linears, updates to the calving and survival evaluations and genomic evaluations.

7. Sheep Genetic Evaluations

- ✚ Data on the Malp flocks was extracted on the 05th October, and the analysis of the production traits (40 day live weight and weaning weight) has been completed.
- ✚ After edits more than 5,500 records were usable for each of the traits, representing 19 flocks. The heritability, representing the amount of trait variation that can be attributed to genetic potential, is over 26%, and the genetic correlation between these two live weight traits is 0.93.
- ✚ The analysis was run across breeds and seven sire breed groups were considered (Belcare, Texel, Mayo Moutain, Charollais, Suffolk, Blue Faced Leicester, and other breeds).
- ✚ A prototype genetic evaluation for Malp flocks is currently being finalised, and results will be available for feedback soon.

8. Milk Recording

National Milk Recording Results by County - 10 day Period 29/09/09 to 09/10/09.

	No. Herds Recorded	No. Cows Recorded	Average Herd Size	Average 24hr Milk kg/Cow	Average Fat %	Average Protein %	Average F + P kg	Average SCC
CARLOW	3	123	41	17.3	4.19	3.53	1.34	255
CAVAN	28	1,373	49	17.8	3.94	3.72	1.36	348
CLARE	18	1,007	56	16.2	4.21	3.78	1.29	302
CORK STH	227	13,575	60	16.8	4.25	3.80	1.35	309
CORK NTH	259	18,374	71	16.7	4.24	3.84	1.35	302
DONEGAL	22	1,779	81	16.8	4.29	3.68	1.34	336
DUBLIN	4	186	47	25.0	3.84	3.59	1.86	256

National Milk Recording Results by County - 10 day Period 29/09/09 to 09/10/09.

	No. Herds Recorded	No. Cows Recorded	Average Herd Size	Average 24hr Milk kg/Cow	Average Fat %	Average Protein %	Average F + P kg	Average SCC
GALWAY	36	2,536	70	15.1	4.55	3.73	1.25	445
KERRY	107	6,522	61	17.1	4.03	3.67	1.32	363
KILDARE	10	1,031	103	22.1	3.78	3.55	1.62	286
KILKENNY	39	2,796	72	14.4	4.37	3.92	1.19	330
LAOIS	24	1,461	61	15.7	4.24	3.72	1.25	348
LEITRIM	2	86	43	23.9	3.97	3.79	1.85	192
LIMERICK	100	6,673	67	17.0	4.01	3.69	1.31	365
LONGFORD	7	363	52	17.1	4.02	3.67	1.31	401
LOUTH	15	1,295	86	20.4	3.77	3.62	1.51	251
MAYO	12	747	62	20.3	3.78	3.59	1.50	417
MEATH	55	3,704	67	19.5	4.03	3.64	1.50	284
MONAGHAN	28	1,251	45	19.9	3.84	3.48	1.46	306
OFFALY	8	465	58	17.6	3.87	3.26	1.25	299
ROSCOMMON	2	94	47	19.0	3.96	3.77	1.47	424
SLIGO	6	167	28	18.2	3.99	3.94	1.44	493
TIPPERARY NTH	30	2,218	74	16.2	4.41	3.80	1.33	292
TIPPERARY STH	72	4,809	67	15.4	4.25	3.77	1.24	321
WATERFORD	55	4,647	84	16.2	4.21	3.85	1.31	301
WESTMEATH	24	1,721	72	15.2	4.55	3.86	1.28	264
WEXFORD	47	3,374	72	15.1	3.94	3.72	1.16	331
WICKLOW E	13	989	76	16.3	3.58	3.56	1.16	309
WICKLOW W	17	1,342	79	20.3	3.83	3.55	1.50	324
	No. Herds Recorded	No. Cows Recorded	Average Herd Size	Average 24hr Milk kg/Cow	Average Fat %	Average Protein %	Average F + P kg	Average SCC
National	1,270	84,708	64	17.9	4.07	3.69	1.39	326

National Milk Recording Averages by Province - 10 day Period 29/09/09 to 09/10/09.

Provincial	No. Herds Recorded	No. Cows Recorded	Average Herd Size	Average 24hr Milk kg/Cow	Average Fat %	Average Protein %	Average F + P kg	Average SCC
Munster	868	57,825	67	16.5	4.20	3.78	1.31	319
Leinster	266	18,850	71	18.2	4.00	3.63	1.39	303
Connacht	58	3,630	63	19.3	4.05	3.76	1.51	394
Ulster	78	4,403	56	18.2	4.02	3.63	1.39	330

National Milk Recording Statistics - Herds, Cows & EDIY 09/10/09

Milk Recording Organisation	Total Herds Recorded YTD 09/10/09	No. EDIY Herds YTD 09/10/09	% Herds EDIY	Total No. Cows Recorded YTD 09/10/09	No. EDIY Cows YTD 09/10/09	% Cows EDIY
Progressive	2,075	847	41%	176,816	71,843	41%
Dairygold	1,508	567	38%	116,797	46,107	39%
Kerry	890	66	7%	62,330	4,240	7%
SWS	857	114	13%	61,676	8,909	14%
Tipperary	135	55	41%	11,046	4,915	44%
Arrabawn	141	116	82%	11,864	10,109	85%
Connacht	140	49	35%	9,469	3,306	35%
Donegal	33	33	100%	3,917	3,917	100%
Total	5,779	1,847	32%	453,915	153,346	34%

Recorded Cows by Milk Recording Organisation - Year on Year Comparison

Milk Recording Organisation	YTD 2008 Cows Recorded 01/01/08 - 09/10/08	YTD 2009 Cows Recorded 01/01/09 - 09/10/09	2009 vs 2008 Year on Year Difference (%)
Progressive	180,914	176,816	-2.3%
Dairygold	125,223	116,797	-7.2%
Kerry	78,976	62,330	-26.7%
SWS	61,676	61,676	0.0%
Tipperary	12,988	11,046	-17.6%
Arrabawn	12,803	11,864	-7.9%
Connacht	10,407	9,469	-9.9%
Donegal	4,781	3,917	-22.1%
Total	487,768	453,915	-7.5%

Brian Wickham Ph.D. Chief Executive Irish Cattle Breeding Federation Soc. Ltd, Highfield House, Shinagh, Bandon, Co. Cork, Ireland, Phone office +353 (0)23 882 0222, mobile +353 (0)86 826 9911 Fax office +353 (0)23 882 0229 E-Mail bwickham@icbf.com ICBF Web site www.icbf.com