



The Dairy Beef Index



*Siobhán Ring
Spring 2019*

What is the Dairy Beef Index?

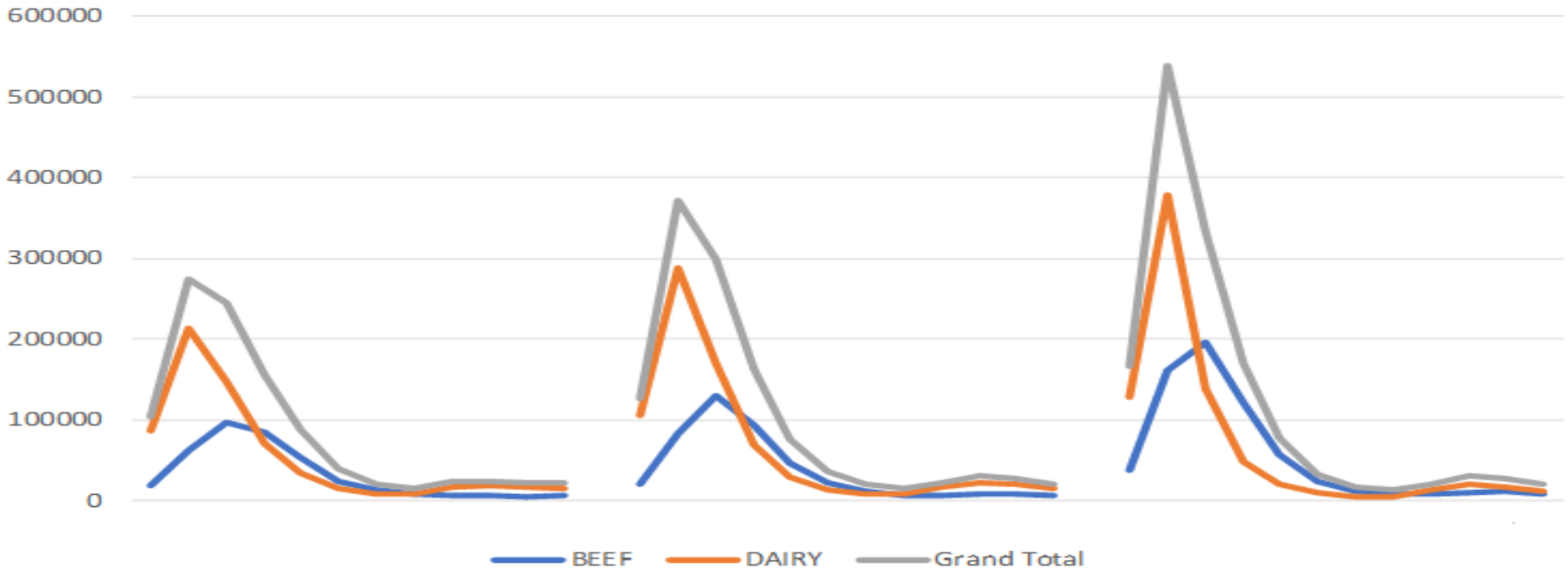
- A breeding goal developed for Irish dairy and beef farmers to promote high quality beef cattle bred from the dairy herd

Benefits

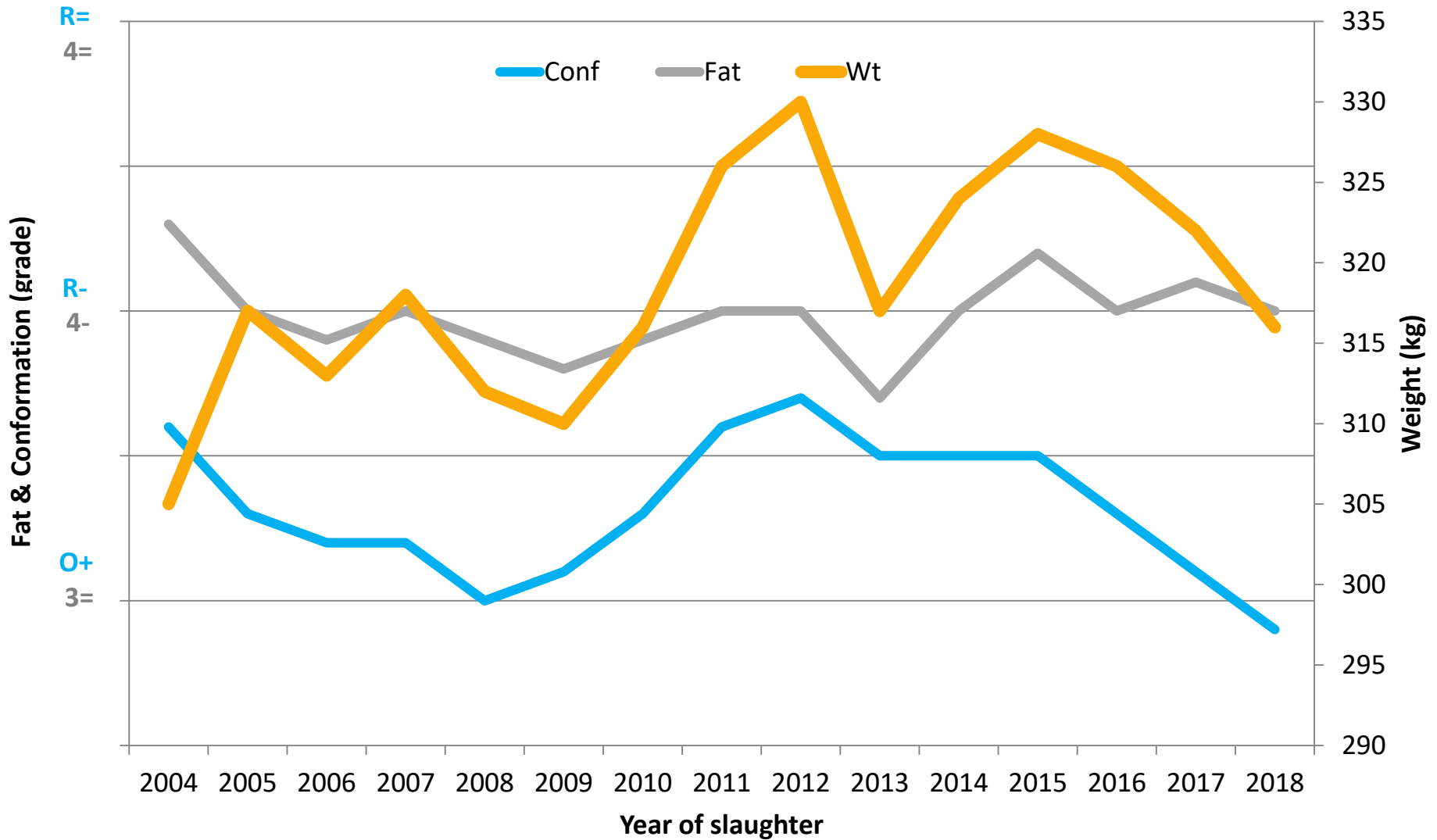
- 1) Identifies easy calving & short gestation beef bulls with high carcass merit
- 2) Progeny are more saleable as calves & profitable at slaughter
- 3) Minimal consequences on dairy cow fertility performance, milk production, or health

Motivation for the Dairy Beef Index

- Dairy herd size increasing
- Increased usage of beef bulls in dairy herds
- Dairy farmers focussed on easy calving & short gestation
 - **Not focussed on carcass merit!**
- Many dairy-bred beef calves do not meet factory specifications



Trends for Dairy-Bred Beef Progeny

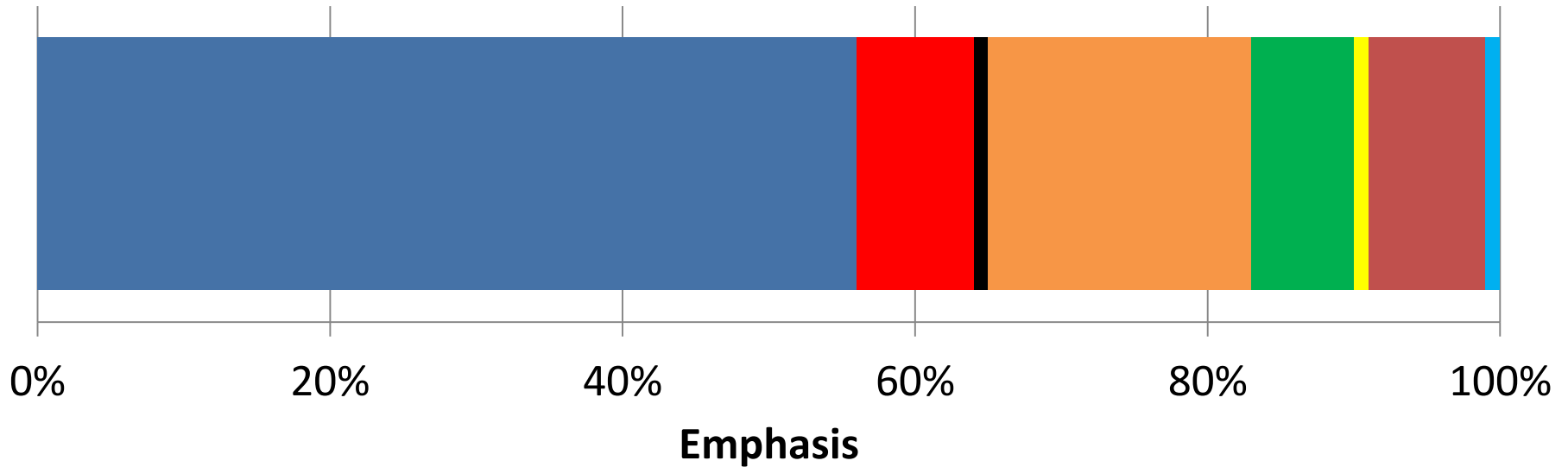


What does the Dairy Beef Index select for?

- High € values for calving sub-index (64% of DBI)
 - Shorter gestation lengths
 - Easy calving
 - Less calf mortality
- High € values for beef sub-index (36% of DBI)
 - Less feed consumption
 - High carcass weight & conformation
 - Low carcass fat
 - Meet factory spec. for weight & conformation
- Each €1 increase in Dairy Beef Index can be interpreted as a €1 expected increase in profit for that bull's progeny compared to progeny born to the average Holstein-Friesian bull

Dairy Beef Index : Relative Emphasis

- Calving difficulty
- Carcass weight
- Feed intake
- Gestation length
- Carcass conformation
- Docility
- Mortality
- Carcass fat



Progeny Performance Comparison

Bull	Brd	DBI (€)	Gest (days)	Dairy heifer cd (%)	Dairy cow cd (%)	Calf mort (%)	Calf price (€)	Carc wt (kg)	Carc conf	Carc fat	Out of spec (%)
------	-----	------------	----------------	---------------------------	------------------------	---------------------	----------------------	--------------------	--------------	-------------	-----------------------

Most used beef AI bulls in dairy herds

KYA	AA	85	279	5	2	3	188	302	O=	4-	47
RGZ	AA	46	284	8	3	3	202	308	O+	4-	38
SPL	HE	46	285	10	3	2	230	315	O=	4-	37
DBZ	BB	18	285	10	7	2	304	350	R=	3=	8
HE2043	HE	18	284	9	3	2	195	291	O+	4-	50
Avg:		43	283	8	4	2	224	313	O+	4-	36

Top Dairy Beef Index AI bulls (Spring 2019)

SFL	BB	121	283	13	4	2	300	346	R=	3=	11
EBY	LM	104	287	9	3	2	230	339	R-	3+	16
BHU	SA	93	286	0	3	2	264	349	R-	4-	13
ZLL	AA	93	284	12	2	3	232	314	O+	4-	32
WZG	AA	91	282	13	1	3	184	301	O+	4-	41
Avg:		100	284	9	3	2	242	330	R-	4-	23

Trait	Change	Value	
Gestation length	1 day longer	-€7.47	Benefits to the dairy farmer: €9.67
Calving difficulty in dairy heifers	1 percentage unit more	-€6.44	
Calving difficulty in dairy cows	1 percentage unit less	+€5.58	
Calf mortality	No difference		
Calf price	€18 higher	+€18	
Carcass weight	17 kg heavier	+€64.60 @ €3.80 base	Benefits to the finisher: €75.12
Carcass conformation	1 grade better	+€10.52 (incl. QA)	
Carcass fat	No difference		

Overall benefit of selecting top 5 bulls on Dairy Beef Index compared to 5 most used beef bulls:

€84.79

- Difference from DBI expectation most likely from feed intake

Using the Dairy Beef Index

- For 2019, only beef AI bulls with ≥ 30 progeny in dairy herds
- Spring 2019 Active Bull List to be published 21st Jan
- Access on www.icbf.com
- Advice:
 - Pick beef bulls from the 2019 Spring Active Bull List
 - Select a team of bulls
 - Select bulls with the highest Dairy Beef Index € value to maximise overall profitability
 - Also, ok to select the highest Calving sub-index bulls from Active Bull List

Active Bull List Panel: Spring 2019

	<i>Worst</i>	<i>Worst</i>	<i>Worst</i>	<i>Average</i>	<i>Best</i>	<i>Best</i>	<i>Best</i>
	10%	20%	40%		40%	20%	10%
Overall Dairy Beef Index (€)	€14	€23	€34	€41	€49	€77	€86
Value of Calving sub-index (€)	-€111	-€92	-€19	€0	€8	€31	€42
Value of Beef sub-index (€)	€14	€24	€35	€49	€72	€126	€142
Genetic merit for calving difficulty: dairy heifers (%)	15.9%	14.7%	11.6%	10.8%	9.5%	7.9%	6.4%
Genetic merit for calving difficulty: dairy cows (%)	8.6%	7.2%	4.8%	4.1%	3.6%	2.7%	2.4%



Our Farmer & Government Representation



Our AI & Milk Recording Organisations



Our Herdbooks



Acknowledging Our Members