

Reproductive Performance, Spring 2006 Final report

Herd Owner: SAMPLE
Herd Number: IE1234567
Report Date: 21/04/2006

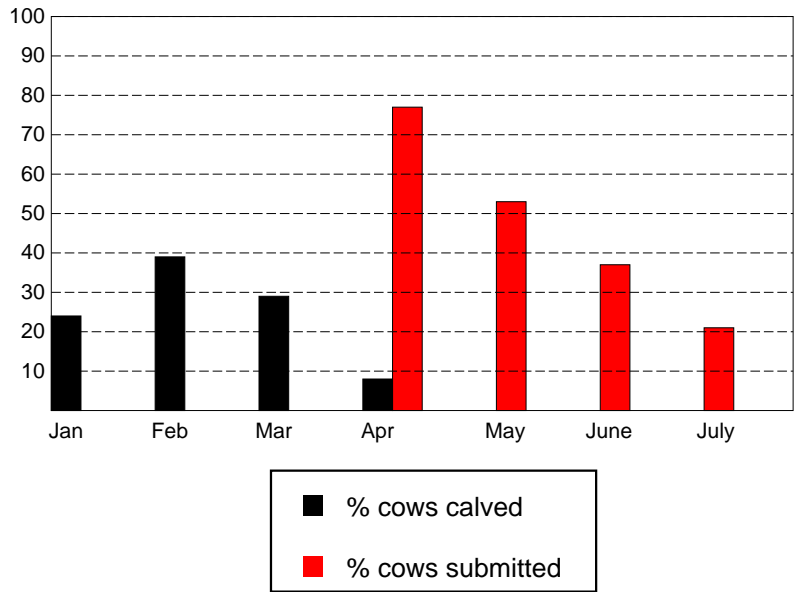
—
 —
 —
 —

1. Summary

This report is a summary of the reproductive performance of all cows that calved since Jan 1st 2006 and are available for service during the current breeding season. Maiden heifers are not included. The insemination data is based on information recorded in Animal Events

Calving	
Calving period	
Start	15/01/2005
Median	16/02/2005
Finish/Last calving	13/04/2005
Related events	
Total cows calved during the calving period	49
Calving interval (days)	395 days
% cows calved by 8 weeks	78%
Mating	
Mating Start Date (MSD)	11/04/2005
Cows calved and served within 105 days of MSD	43
Number of serves within 105 days of MSD	89
Cows confirmed pregnant within 105 days of MSD	

Calving & submission patterns, Spring 2006



2. Herd Performance

The performance of your herd has been expressed relative to other recorded herds (with a minimum of 30 calvings)

a. Calving Interval

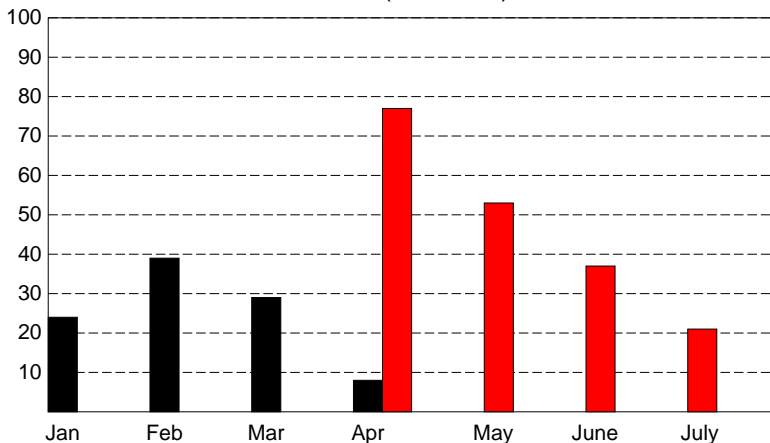
Number of days between the median calving dates of the current and previous calving season.

Your Herd	394.5
National Average	365

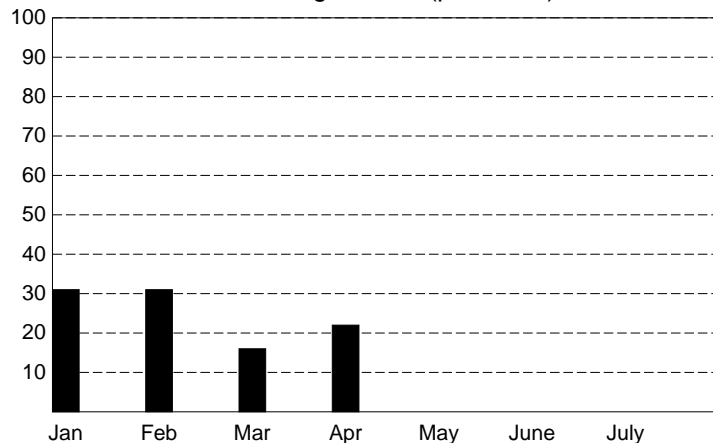
Btm 15%	Achievable	Top 15%
400		355

b. Calving pattern

i. The current season (observed)



ii. The following season (predicted)

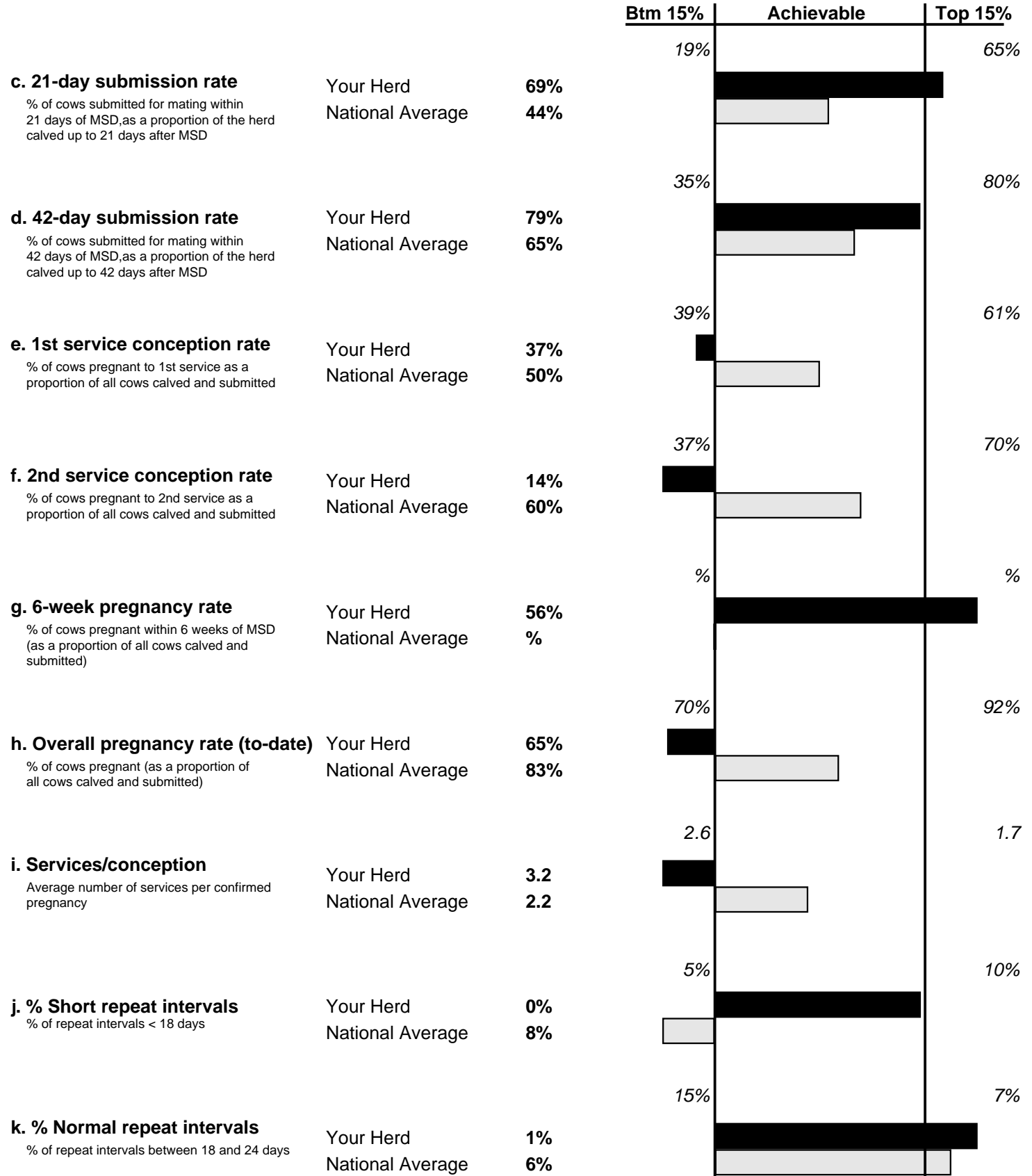


Reproductive Performance, Spring 2006 Final report

Herd Owner: SAMPLE
Herd Number: IE1234567
Report Date: 21/04/2006

2. Herd Performance (continued)

The performance of your herd has been expressed relative to other recorded herds (with a minimum of 30 calvings)



Reproductive Performance, Spring 2006 Final report

Herd Owner: **SAMPLE**
 Herd Number: **IE1234567**
 Report Date: **21/04/2006**

—
 —
 —
 —

2. Herd Performance (continued)

The performance of your herd has been expressed relative to other recorded herds (with a minimum of 30 calvings)

